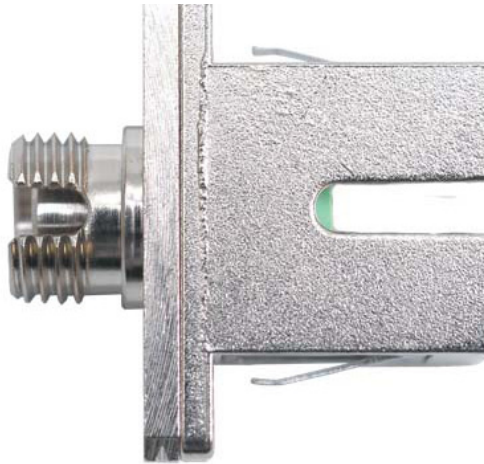


Part #: F1-2822CC



## FEATURES

- Low insertion loss
- Perfect durability
- Precision alignment straight split sleeves
- Reducing space requirements
- Eliminating unnecessary interconnect mating losses
- Improving existing interconnect systems

## APPLICATIONS

- Telecommunications
- Local area network
- Fiber optic instruments
- Testing of optical devices with different connectors
- Updating patch panel cable and connector configurations

## SPECIFICATIONS

### Materials

#### SC Side

External housing	Nickel Plated Zinc Alloy
Internal housing	PBT
Dust cap	PBT
Sleeve	Zirconia

#### FC Side

External housing	Nickel Plated Zinc Alloy
Dust cap	Vinyl
Sleeve	Zirconia

### Optical Characteristics

Connector/Adapter Withdraw Force (side SC)	> 100N
Insertion Loss variation during withdraw force test	< .20 dB
Insertion Loss variation after 500 connections	< .10 dB
Typical Insertion Loss	.1dB@1310nm

### Environmental

Operating Temperature (°C)	.Min -20° Typ. +25° Max +60
----------------------------	-----------------------------