

FIS OV-350 HAND HELD, MINI OSA (xWDM SPECTRUM ANALYZER)



FEATURES

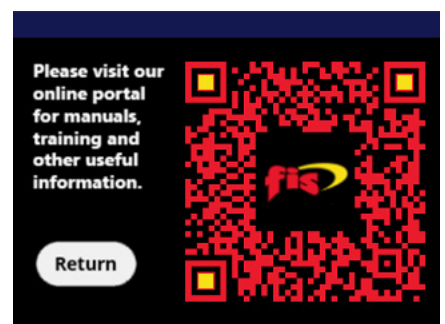
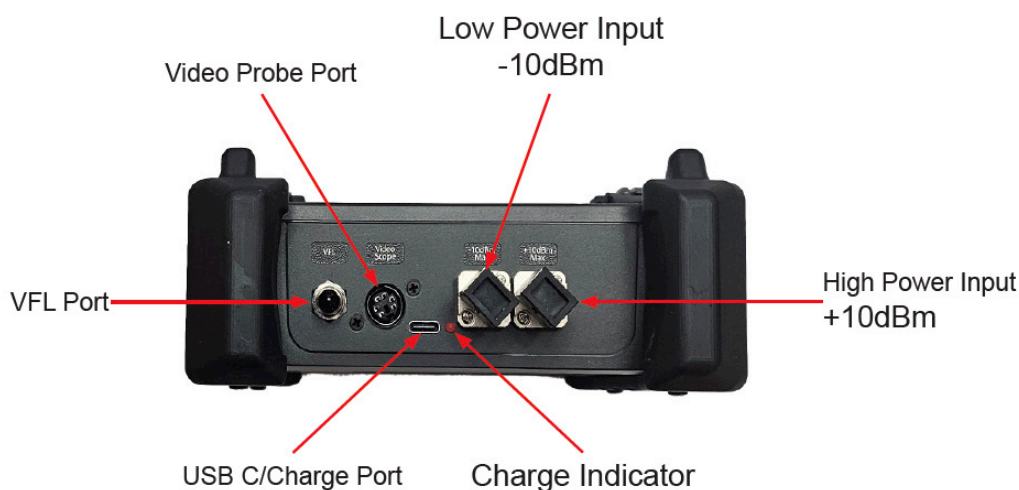
- Fast Real Time with <1/2 second Update
- Bar Graph, Data Table & 6GHz Line Graph
- Optional Auto Center/Pass/Fail Video Inspection System
- Solid State Optics-No Moving Parts
- Up To 96 Channels (DWDM)
- 18 & 8 Channel
- Hi-Power & Low-Power Test Ports
- 50 or 100 GHz
- Pass/Fail Thresholds
- User Setup Screen and Help System
- 4" Touch Color Display
- Rugged Case w/Impact Resistant Boot
- USB/PC Port with Included PC Software
- Stores up to 1000 Tests
- 6GHz (0.05nm) Source Setting/Drift Testing
- Channel/Gain Tilt Monitoring

The OV-350 Hand Held Optical Spectrum Analyzers are one of the most rugged and affordable full featured Mini OSAs on the market. The (DWDM) C-band Hand-Held OSA is available in up to 96 channels (ch.14.5 – 62.0) with 50 and 100 GHz channel spacing and a line graph mode with 6 GHz slicing. A CWDM Spectrum Analyzer is also available. Our standard packages all 18 channels or just the upper 8 channels, both with 20 nm spacing. The 18 channel analyzer tests 1271-1611nm and the 8-channel analyzer tests 1471-1611nm. It also offers a power tilt feature with a full set of selectable xWDM scale limits.

Another great feature is that all our OSAs come standard with the two different dynamic ranges. The "Low-Power" test input can read -50dBm to -10 dBm while the "High-Power" test input can read -30dBm to +10 dBm.

These OV-350 OSAs are simple and fast to operate with their touch screen operation and twice a second scan. It offers high end features such as power tilt monitoring for DWDM channel equalization. With a full set of selectable scale limits and thresholds, the unit makes zeroing in on channel measurements easy. For flexibility, the channel numbers are selected in wavelength or frequency. The information is displayed in bar graph, 6GHz line graph and table mode. The OV-350 OSA users to set pass/fail thresholds and can store up to 1000 tests that can be downloaded via the USB PC port. The online help system assists new users in parameter setup and file manipulation. This unit also offers an IEC61300-3-35 auto center/pass/fail video inspection feature for use with the optional VIS-300 Video Probe.

Top View of Unit



FIS OV-350 HAND HELD, MINI OSA (xWDM SPECTRUM ANALYZER)



DWDM SPECIFICATIONS

Wavelength Range	Channels 14.5 - 62.0 (196.20THz - 191.45THz) (1527.99 - 1565.90nm)
Channel Spacing	50GHz, 100GHz
Wavelength Accuracy	±0.1nm
Channel Power Range	High Power: -30dBm to +10dBm / Low Power: -50dBm to -10dBm
Absolute Accuracy	±1 dB
Max Composite Power	+29dBm
PDL	±0.15dB
Optical Rejection Ratio	40dBc (@50GHz)
Measurement Time	< 1/2 Second
Readout Resolution	0.01dB
Return Loss	>40dB
Optical Interface	SC/APC (FC/APC adapters optional)
Graphical Display	Bar graph, 6GHz line graph and table view

CWDM SPECIFICATIONS

Wavelength Range	18 Channel 1271-1611nm or 8 Channel 1471-1611nm
Channel Spacing	20nm
Channel Pass Band	±6.5nm
Channel Power Range	+5dBm to -50dBm or -50dBm to +5dBm
Absolute Accuracy	±1 dB
Max Composite Power	+23dBm
PDL	±0.2dB
Adjacent Channel Isolation	30dB
Measurement Time	< 1/2 Second
Readout Resolution	0.01dB
Return Loss	>40dB
Optical Interface	SC/APC (FC/APC adapters optional)
Graphical Display	Bar graph

UNIT SPECIFICATIONS

Display	4 in Color TFT
Dimensions	5.25" L x 6.125" W x 2.5" H / (133mm L x 156mm W x 64mm H)
Weight	1.5 lbs (0.7 kg)
Battery	Li-pol, 10hr typ.
Power Requirement	USB 5V, 2A
Operating Temperature	-10°C to 40°C
Storage Temperature	-20°C to 60°C
Accessories Included	5V, 3.4A USB Wall Charge with USB cable, 2 stylus, FIS Connect PC Software, manual

FIS OV-350 HAND HELD, MINI OSA (xWDM SPECTRUM ANALYZER)

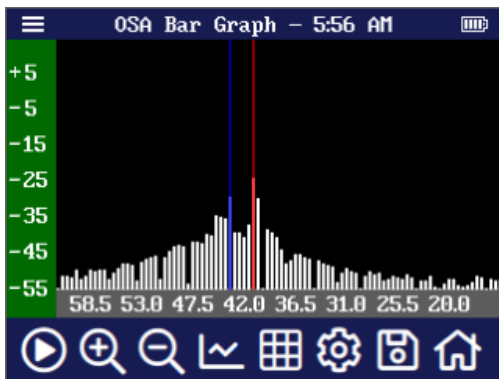


OPTIONAL POWER METER SPECIFICATIONS

Detector Type	InGaAs
Connector Type	LC, ST, FC, SC, 1.25mm and 2.5mm Interchangeable
Dynamic Range	+5 to -77dB (CATV - +25 to -57dB)
Calibrated Wavelengths	850,1300,1310,1490,1550 and 1625nm or 1650nm
Power Measurement Uncertainty	± 0.18 dB under reference conditions, ± 0.25 dB from 0 to -65 dBm, ± 0.35 dB from 0 to +5 dBm and from -65 to -77 dBm
Units of Measurement	dBm, dB
Resolution	.01 dB

VFL SPECIFICATIONS

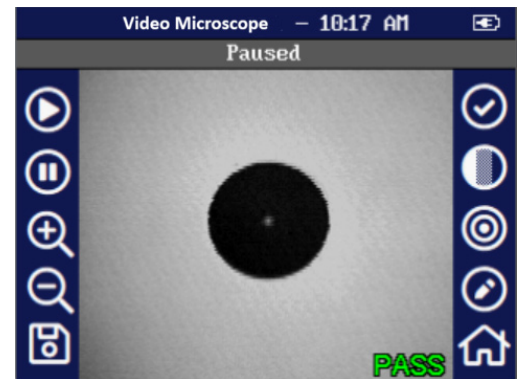
Emitter Type	Laser
Wavelength	650nm ± 5nm
Laser Safety Class	Class IIFDA21 CFR1040.10 & 1040.11 IEC 825-1: 1993
Connector Type	2.5mm Universal
Output Power	1mW Max.



Bar Graph View

Chan.	Frequency	Power	Min
44.5	194.45	-45.01	-59.96
44.0	194.40	-44.35	-59.96
43.5	194.35	-47.72	-59.96
43.0	194.30	-45.92	-59.96
42.5	194.25	-43.43	-59.96
42.0	194.20	-43.79	-59.96
41.5	194.15	-43.79	-59.96
41.0	194.10	-42.98	-59.96
40.5	194.05	-52.94	-59.96
40.0	194.00	-42.06	-59.96

Data Table View



Video Probe Image (optional)

ORDERING INFORMATION

OV350DW96	96 Channel DWDM Spectrum Analyzer (C-Band) + VFL with SC Adapters
OV350DW96VIS	96 Channel DWDM Spectrum Analyzer (C-Band) + VFL, SC Adapters, with Video Inspection Probe (VIS-300)
OV350CW18DW96	96 Channel DWDM + 18 Channel CWDM (1271-1611nm) Spectrum Analyzer +VFL with SC Adapters
OV350CW18DW9VIS	96 Channel DWDM + 18 Channel CWDM (1271-1611nm) Spectrum Analyzer +VFL with SC Adapters and Video Inspection Probe (VIS-300)
OV350CW8*	8 Channel CWDM Spectrum Analyzer (1471-1611nm) +VFL with SC Adapters
OV350CW8VIS	8 Channel CWDM Spectrum Analyzer (1471-1611nm) + VFL with SC Adapters with Video Inspection Probe (VIS-300)
OV350CW18*	18 Channel CWDM Spectrum Analyzer (1271-1611nm) +VFL with SC Adapters
OV350CW18VIS	18 Channel CWDM Spectrum Analyzer (1271-1611nm) +VFL with SC Adapters with Video Inspection Probe (VIS-300)
VIS-300	Video Inspection Probe for use on FIS OV350 platforms - includes standard UPC tips

* Custom built channel packages are available. Call your FIS representative for more information.