

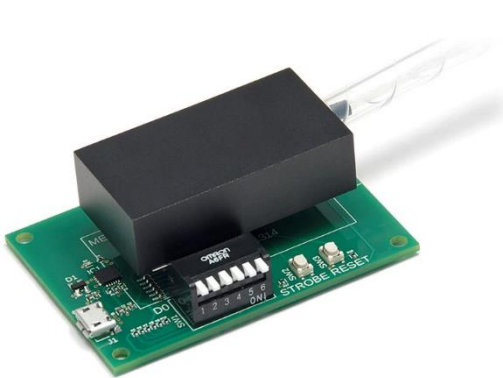
MEMS 1xN Fiber Optical Switch

N up to 380 ports, bidirectional, USB, RS232, I2C, TTL



DATASHEET

BUY NOW



The MEMS 1xN Fiber Optical Switch is based on a reflecting silicon mirror that directs light from an input fiber to the requested output fiber among the N output fibers. The light path length difference between each state is small. The switch is bidirectional, that can be used as Nx1. It comes mounted on a PCB with control electronics powered by 5VDC. I2C control interface is default. TTL, USB or RS232 with GUI is achieved through an optional adapting board that comes with a wall pluggable power supply and a computer interface cable.

This MEMS platform offers the advantages of low cost and compact size. High on/off ratio and channel isolation configurations are available at higher prices.

Applications

- Network
- Data Storage
- Sensor System
- Instrument

Features

- Up to 380 Channels
- 780 to 2100nm
- SM, PM
- Compact
- Low Cost
- Bidirectional
- High Reliability

Specifications

Parameter	Min	Typical	Max	Unit	
Wavelength	750		2200	nm	
Wavelength Range		± 30		nm	
	0.7		1.6	dB	
Insertion Loss ^[1]	<32 Channel	0.4	0.7	0.9	dB
	>32 Channel	1	1.3	1.6	dB
Cross Talk ^[2]	SM	55	60	70	dB
	MM	30	45	50	dB
Retune Loss ^[3]	SM	50	50	55	-dB
	MM	30	30	35	-dB
Repeatability	0.03		0.05	dB	
Polarization Dependent Loss (SM)		0.05	0.1	dB	
Polarization Extinction Ratio (PM)	18	23	29	dB	
Wavelength Dependent Loss ^[2]			0.3	dB	
Temperature Dependent Loss			0.2	dB	
Switching Time		20	30	ms	
Actuation		No-latching			
Optical Power Handling			500	mW	
Life Time	10 ⁹			cycle	
Operating Temperature	-5		70	°C	
Storage Temperature	-40		80	°C	
Power Supply	0		5	VDC	
Operation Current			500	mA	
Digital Logic High	3.3		5	VDC	
Power Consumption			100	mW	

Notes:

[1]: measured at 1550nm without connectors @CWL ±30nm, 23°C: other wavelength may be larger but less than 2dB. Each connector adds 0.3dB.

[2]: @CWL ±30nm, 23°C

[3]: measured without connectors. With FC/ACP single mode fiber RL~60dB, and multimode fiber <40dB

Legal notices: All product information is believed to be accurate and is subject to change without notice. Information contained herein shall legally bind Agiltron only if it is specifically incorporated into the terms and conditions of a sales agreement. Some specific combinations of options may not be available. The user assumes all risks and liability whatsoever in connection with the use of a product or its application.

Rev 05/01/24

MEMS 1xN Fiber Optical Switch

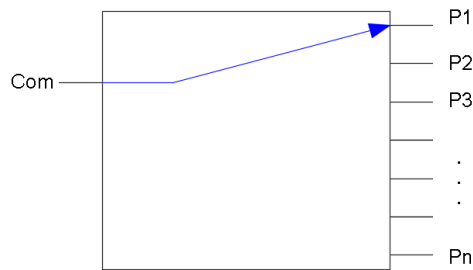
N up to 380 ports, bidirectional, USB, RS232, I2C, TTL



DATASHEET

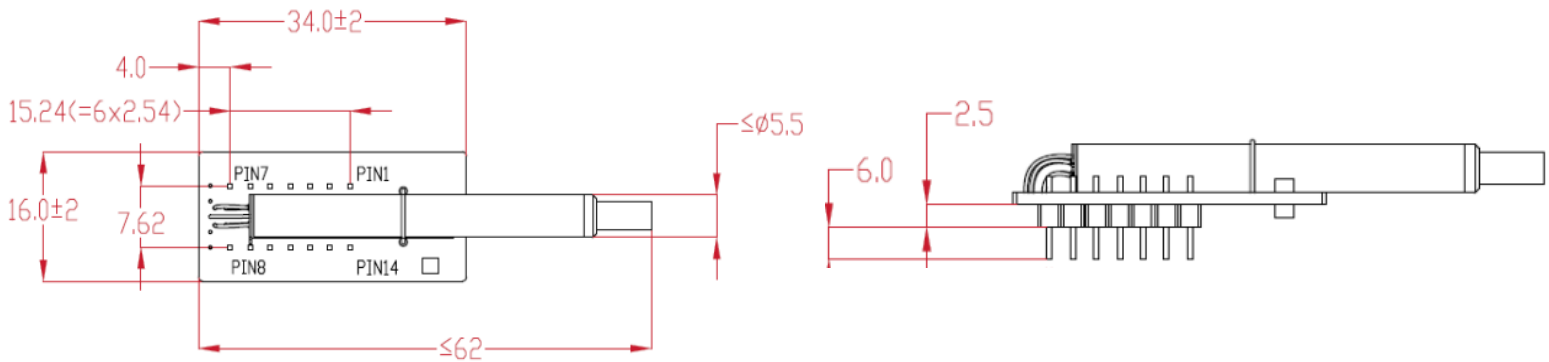
Optical Path Diagram

Switchable fiber loops in series

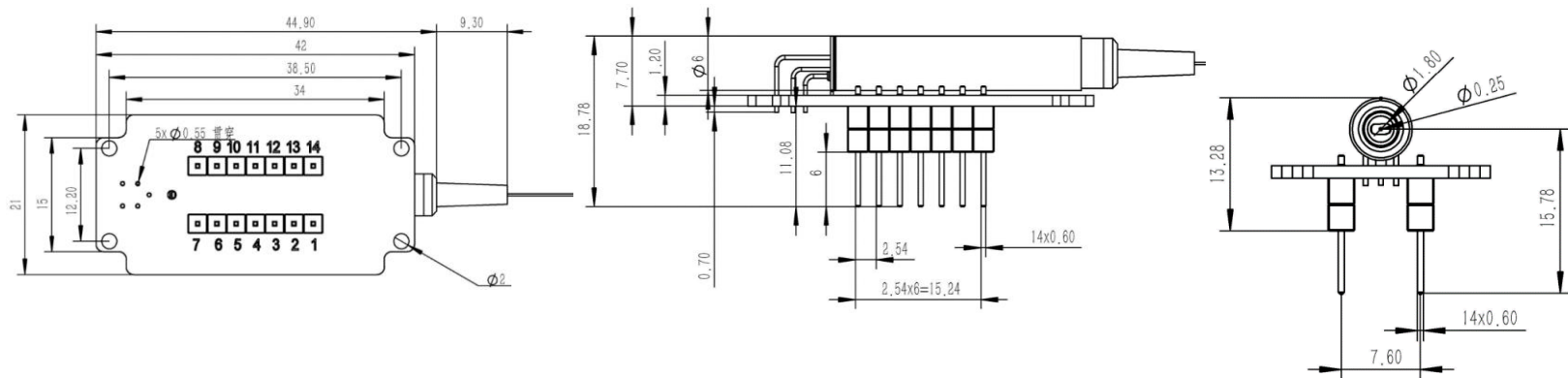


Dimension (mm)

1x4, 1x8



1x12 to 1x64



MEMS 1xN Fiber Optical Switch

N up to 380 ports, bidirectional, USB, RS232, I2C, TTL



DATASHEET

Ordering Information

Prefix	Configuration	Wavelength ^[1]	Driver ^[2]	Fiber Type	Fiber Cover	Fiber Length	Connector	On/Off	ER
MSWH-	1x4 = AA4	1240-1680nm = 1	TTL/USB = 1	SM28 = 1	Bare fiber = 1	0.25m = 1	None = 1	Regular = 1	Regular = 1
	1x8 = AA8	1550nm = 5	TTL/RS232 = 2	50/125 = 2	0.9mm tube = 3	0.5m = 2	FC/PC = 2	SM70dB = 2	23 = 2
	1x12 = A12	1310nm = 3	I2C ^[2] = 5	Hi1060 = 3	Special = 0	1.0m = 3	FC/APC = 3	MM50dB = 3	29 = 3
	...	1310/1550nm = B	Special = 0	PM1550 = 4		Special = 0	SC/PC = 4		
	1x64 = A64	850nm = 8		62.5/125 = 5			SC/APC = 5		
	...	760-1360nm = C		SM600 = 6			SC/UPC = 5		
	1x256 = 256	1060nm = 6		SM1950 = 9			ST/PC = 6		
	...	980nm = 9		SM800 = 8			LC/PC = 7		
	1x380 = 380	780nm = 7		Hi780 = 7			MTP = 9		
		1950nm = D		PM850 = E			LC/APC = A		
	895nm = E		PM980 = F			LC/UPC = U			
	Special = 0		PM1310 = D			Special = 0			
			Special = 0						

[1]. Selection of 5, 3, B is the same device as 1, but test at different wavelength with extra cost.

[2]. When selecting I2C, one needs to have good knowledge and experience with circuit design.

RED indicates special order

Note:

- ☐ PM1550 fiber works well for 1310nm

Driver Part Number: **SWDR-S1XN2D5VSUSB/TTL**

Driver Part Number: **SWDR-S1XN2D5VSR232/TTL**

Application Notes

Fiber Core Alignment

Note that the minimum attenuation for these devices depends on excellent core-to-core alignment when the connectors are mated. This is crucial for shorter wavelengths with smaller fiber core diameters that can increase the loss of many decibels above the specification if they are not perfectly aligned. Different vendors' connectors may not mate well with each other, especially for angled APC.

Fiber Cleanliness

Fibers with smaller core diameters (<5 μm) must be kept extremely clean, contamination at fiber-fiber interfaces, combined with the high optical power density, can lead to significant optical damage. This type of damage usually requires re-polishing or replacement of the connector.

Maximum Optical Input Power

Due to their small fiber core diameters for short wavelength and high photon energies, the damage thresholds for device is substantially reduced than the common 1550nm fiber. To avoid damage to the exposed fiber end faces and internal components, the optical input power should never exceed 20 mW for wavelengths shorter 650nm. We produce a special version to increase the how handling by expanding the core side at the fiber ends.

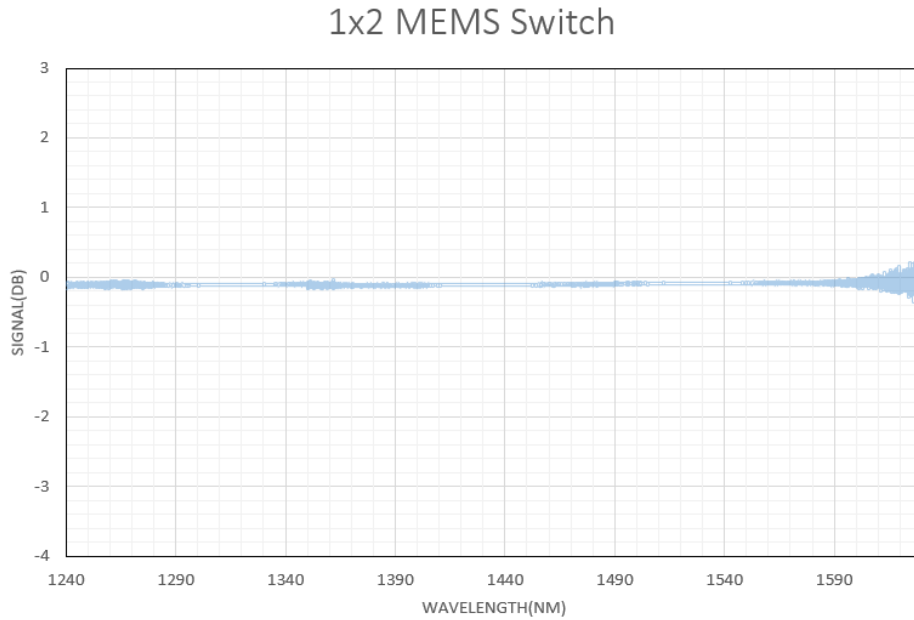
MEMS 1xN Fiber Optical Switch

N up to 380 ports, bidirectional, USB, RS232, I2C, TTL



DATASHEET

Typical Insertion Loss vs Wavelength (1240-1630nm)



MEMS 1xN Fiber Optical Switch

N up to 380 ports, bidirectional, USB, RS232, I2C, TTL

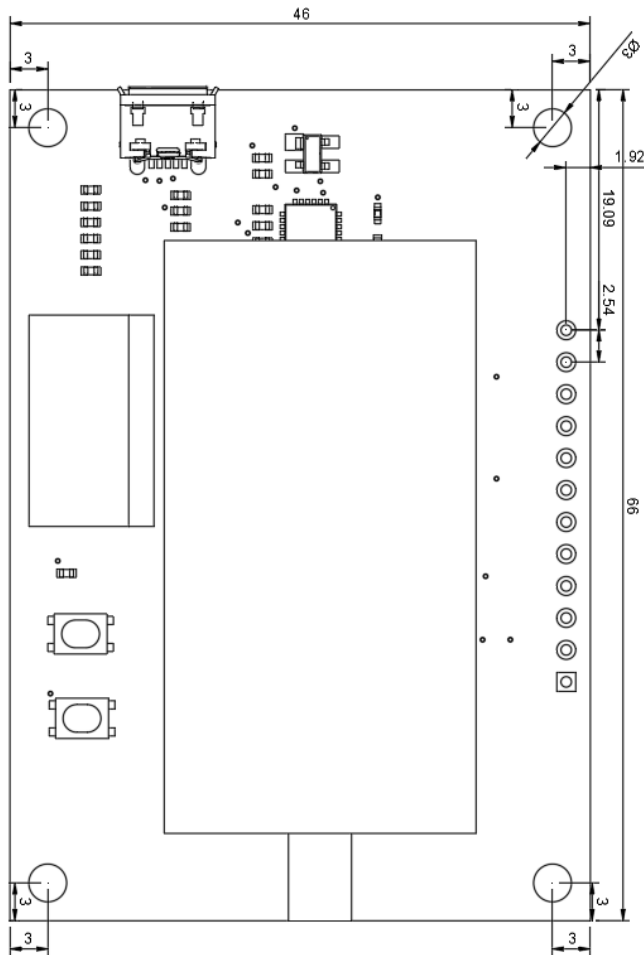


DATASHEET

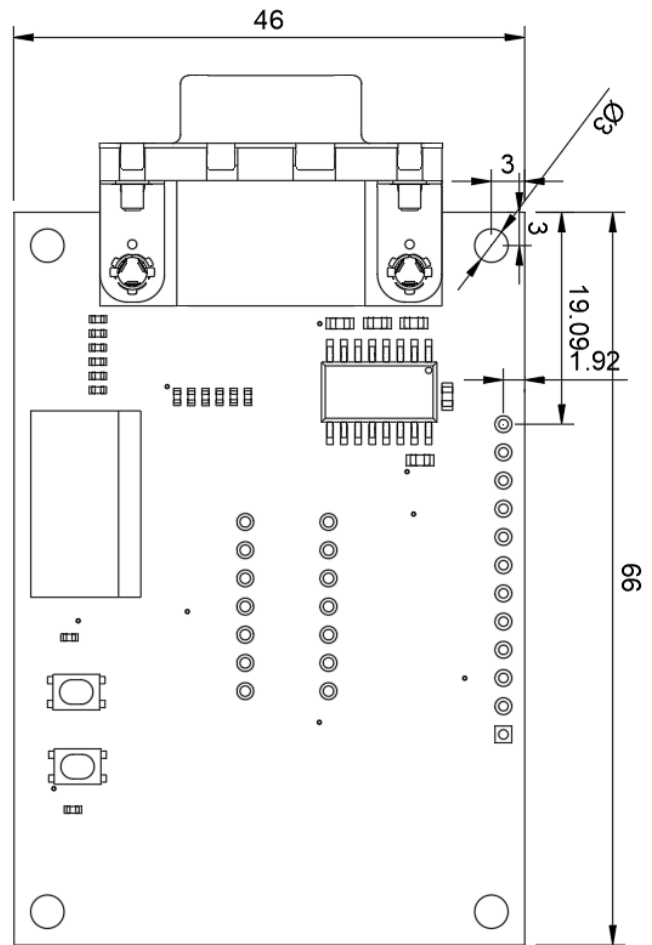
Driver Description

The MSWH MEMS 1xN Driver (Up to 164 ports) has three control modes: (1) USB/TTL (Virtual COM) with a user-friendly GUI Windows™ program supporting UART commands. The unit has a mini USB connector with a USB-to-MicroUSB cable. It can be powered by a 5V USB cable and USB power supply or via onboard 5V-GND holes. (2) RS232/TTL with a user-friendly GUI Windows™ program supporting UART commands. The unit has an RS232 connector. As shown below the switches are mounted on these driver PCBs and tested prior to shipping. This makes integration or performance evaluation easy. (3) The switches can also be mounted directly onto the customer PCB with 14 pins, following detailed instructions. This approach requires customers to have circuit design experience.

USB/TTL Driver



RS232/TTL Driver



Manual Operation Instruction

- Power the Board**

The unit can be powered up via 5V USB power supply.

- Onboard Switch Control**

Onboard DIP-6 switch is available for quick TTL function test and fast manual control. After setting the DIP-6 switch, press the STROBE button to change the channel of MEMS 1xN switch.

MEMS 1xN Fiber Optical Switch

N up to 380 ports, bidirectional, USB, RS232, I2C, TTL



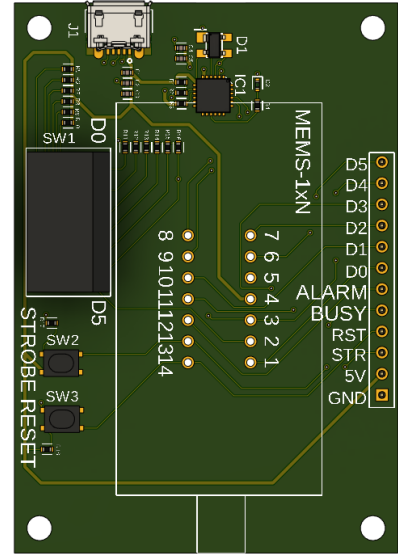
DATASHEET

TTL Operation Instruction

- TTL Interface Definition

Name	Direction	Description
5V	Power	The driver board can also be powered up via these two holes.
GND	Ground	
D0-D5	Input	6 Pin TTL
STR	Input	STROBE, Send a pulse to set the switch channel
RST	Input	RESET, Send a pulse to reset switch status
BUSY	Output	Logic HIGH when the device is busy
ALARM	Output	Logic HIGH when the device meets error when booting/ high temperature

CH	D5	D4	D3	D2	D1	D0
1	0	0	0	0	0	0
2	0	0	0	0	0	1
3	0	0	0	0	1	0
.						
64	1	1	1	1	1	1



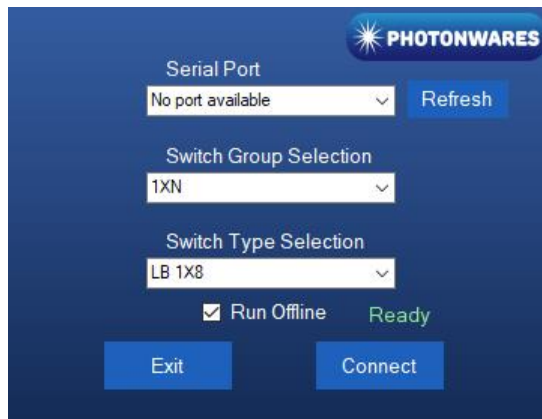
Computer Graphic Software User Guide

- Install the Program

Click on setup.exe for the automatic installation, which should be provided with the product.

- Run the Program

Run the "Switch Operation Program.exe" and the program will open the configuration window. Select the correct Switch Group and select the specific Switch Type. Then click the "Connect" button and the program will establish the connection between PC and board.



MEMS 1xN Fiber Optical Switch

N up to 380 ports, bidirectional, USB, RS232, I2C, TTL



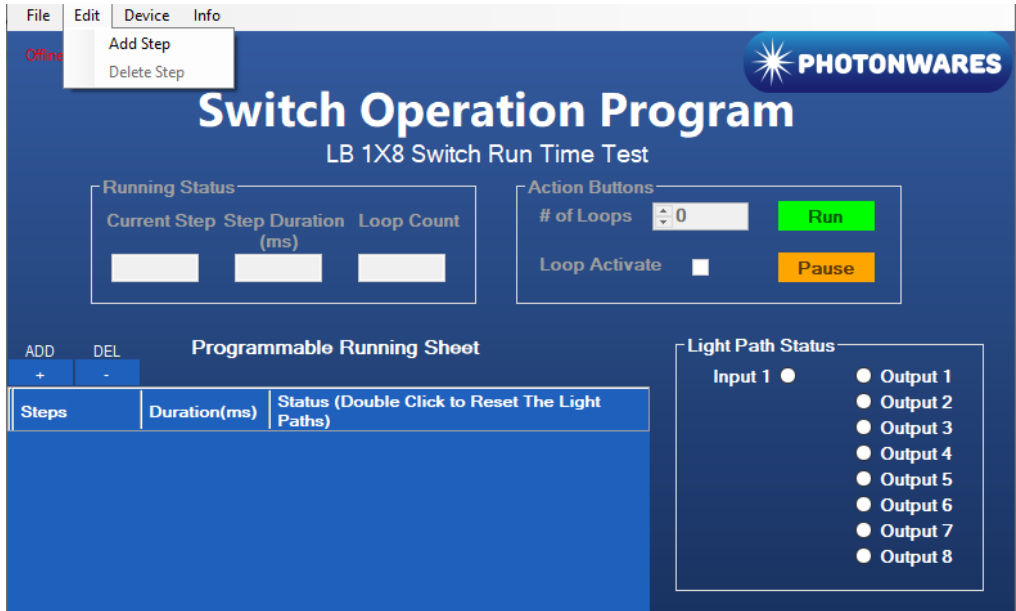
DATASHEET

TTL Operation Instruction

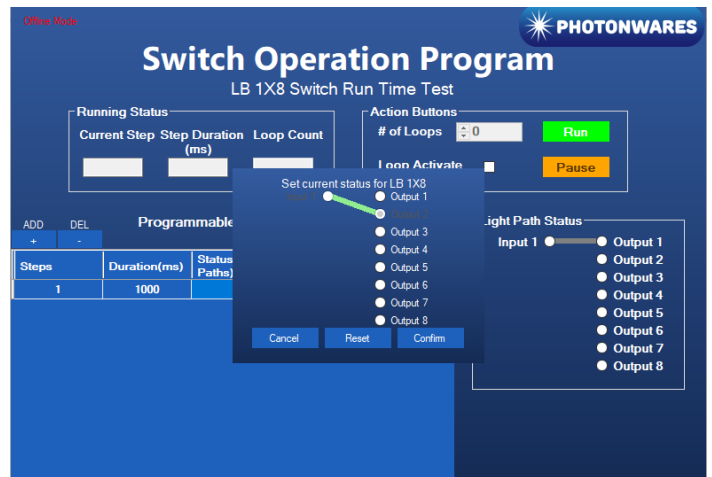
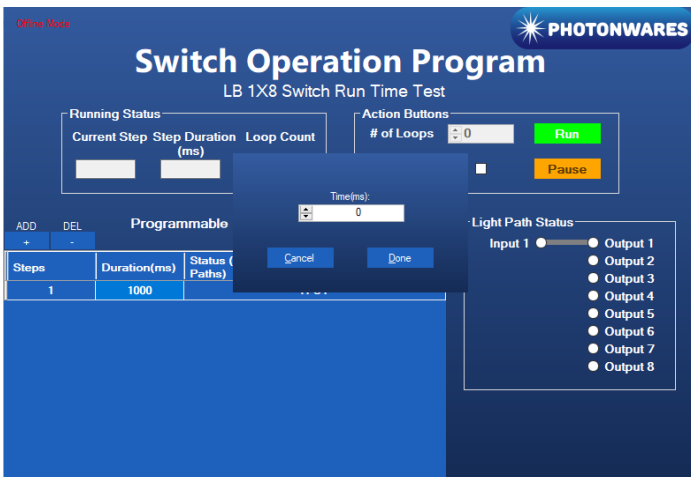
• **Create and edit testing time sequence**

Add step: Click the “Add Step” button in the menu strip or click the “+(ADD)” button would both add a step to the Programmable Running Sheet.

Delete step: Click the “Delete Step” button in the menu strip or click the “-(DEL)” button would both delete a step in the Programmable Running Sheet.



Edit step: There are two things that you can modify for one step. One is the light path, and the other is the duration for each step. Double click the cell that you want to modify, and the program will allow you to modify the setting.



MEMS 1xN Fiber Optical Switch

N up to 380 ports, bidirectional, USB, RS232, I2C, TTL



DATASHEET

Command List

- **Command in Serial**

The serial communication should be set in **115200 baud rate, none parity, 8 data bits, 1 stop bits**.

Command in **ASCII**:

1. Check PN of device:

CMD: *PN<cr>

RTN: <cr><lf>AB.CD.EFGH<cr><lf>

2. Check SN of device:

CMD: *SN<cr>

RTN: <cr><lf>ABCDEFGHIJ<cr><lf>

3. Set Channel:

CMD: *SWABC<cr>

RTN: <cr><lf>CHAN:ABC<cr><lf>

Example: *SW001<cr> RTN: <cr><lf>CHAN:001<cr><lf>

Note: <cr> is 0x0C in HEX, \n in ASCII