

OCTOPUS™

OCTOPUS 4G LTE PUBLIC SAFETY SIGNAL METER



UTILITY PROVIDERS ALSO RELY UPON BAND 14 FOR CRITICAL COMMUNICATIONS WITH TELEMATICS AND IOT DEVICES

CARRIER	FREQ MHz	RSRQ dB	RSRP dBm
AT&T	739.0	-9.0	-77
AT&T FN	763.0	-6.0	-87
VERIZON	751.0	-9.0	-90
T-MOBILE	2140.0	-11.0	-92
AT&T	1967.5	-8.0	-92
VERIZON	887.5	-10.0	-95



FIREFIIGHTERS REQUIRE 758-768 MHz SPECTRUM TO BE CLEAR FOR EMERGENCY RELAYS

OCTOPUS™
4G LTE SIGNAL METER

AT&T

verizon

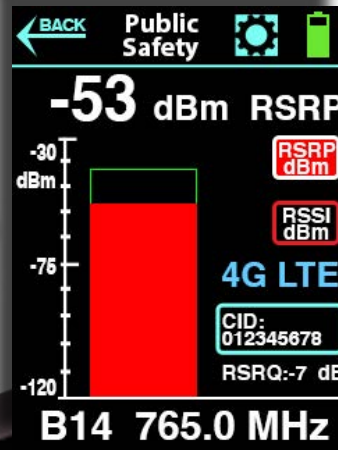
T-Mobile

ALL 4G **Public Safety**

SCAN ALL 4G BASE STATIONS, CARRIERS OR ONLY AT&T FIRST-NET



OPTIONAL DIRECTION FINDING ANTENNA AVAILABLE



LAW ENFORCEMENT RELY HEAVILY UPON ROBUST BROADBAND CONNECTIVITY

SPARFCN	RSRP [dBm]	RSC	SRNC	PHN	CELLID	PLMN	CELLSTATUS	RSRP [dBm]	RSRQ [dB]	FREQ [MHz]	BAND	WIDTH [MHz]	FREQUENCY [MHz]	BAND
3139	-50	130	410	212	20867872	2204	CELL_SUITABLE	-58	6	10	20	729	12	
800	-54	130	410	212	20867846	2204	CELL_SUITABLE	-77	6	10	20	1,910.00	2	
975	-67	130	410	212	20867700	2204	CELL_SUITABLE	-117	-26	5	20	1,907.50	2	
1615	-45	130	360	85	5474567	2204	CELL_SUITABLE	-56	-7	5	20	711.5	12	
3230	-41	130	360	429	1137043	2204	CELL_SUITABLE	-71	-10	20	20	2,140.00	2	
808	-47	130	360	452	1137049	2204	CELL_SUITABLE	-74	-7	20	20	1,900.00	2	
3249	-53	130	360	277	2205079	2204	CELL_SUITABLE	-79	-9	10	20	751	12	
2040	-54	130	360	277	2205079	2204	CELL_SUITABLE	-81	-10	20	20	800	12	
1108	-55	130	360	277	2205079	2204	CELL_SUITABLE	-86	-7	20	20	1,900.00	2	
3030	-60	130	360	277	2205079	2204	CELL_SUITABLE	-91	-7	20	20	1,130.00	2	

EXPORT MEASUREMENTS INTO INCLUDED PC SOFTWARE FOR FURTHER ANALYSIS



CELEBRATING 50 YEARS IN BUSINESS!

+1 732-548-3737
www.bvsystems.com
sales@bvsystems.com

OCTOPUS™

OCTOPUS 4G LTE PUBLIC SAFETY SIGNAL METER

4G BANDS SUPPORTED: B12 / B17 (700), B2 (1900), B5 (850), B13 (700), B4 (AWS 1700)

FIRSTNET BANDS SUPPORTED B14 (758-768, 788-798 MHz)

RECEIVER MODES: Passive only (does not transmit nor require a SIM card)

4G LTE MEASUREMENTS: RSRP, RSRQ, RSSI

GENERAL SPECIFICATIONS:

Antenna: Multi-band SMA 50 ohm
Controls: Color touchscreen
USB Port: Trickle charges unit
Updates firmware
Export measurements to Windows PC for further analysis
Audible beeps and vibrations
Alerts:
Warm Up Time: < 1 minute
Runtime: >10 hours on a full charge
Power: Internal Li-Po battery system
12V jack for external power & charging dock
320 x 240 resistive LCD touchscreen
1 lbs.
Display
Weight:
Dimensions: 5.5" H x 3" W x 1.25" L

INCLUDED ACCESSORIES:

Rugged Carrying Case
AC Fast Charging Dock
(1) Omni-Directional Multi-Band SMA Antenna

OPTIONAL ACCESSORIES:

DF Antenna: Direction Finding Antenna



Octopus Pro Kit includes rugged transport case and direction finding antenna for pinpointing distant cellular networks

Octopus can be fast-charged via its own cradle or trickle charged via Mini USB

Handy for wireless installations:



Fire Safety Alert Systems



EV Charging Stations



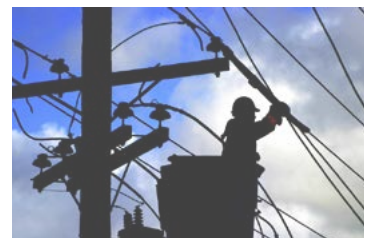
FirstNet Emergency Response



Vending Machines



Security Alarm Systems



Utility Networks

CELEBRATING
50 YEARS
IN BUSINESS!



+1 732-548-3737
www.bvsystems.com
sales@bvsystems.com