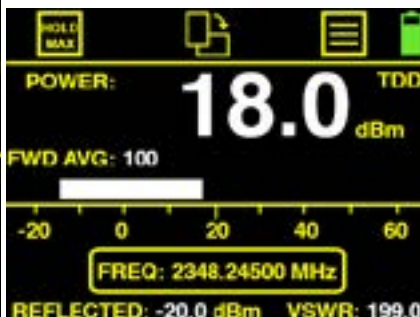


YellowFrog-Pro

WIDEBAND POWER METER

- Accurately measures digital & analog RF power
- Wide frequency range
- Measures true average power
- Touchscreen display & control
- Reads power in watts or dBm
- Reads VSWR
- Internal rechargeable battery
- Type-N connections



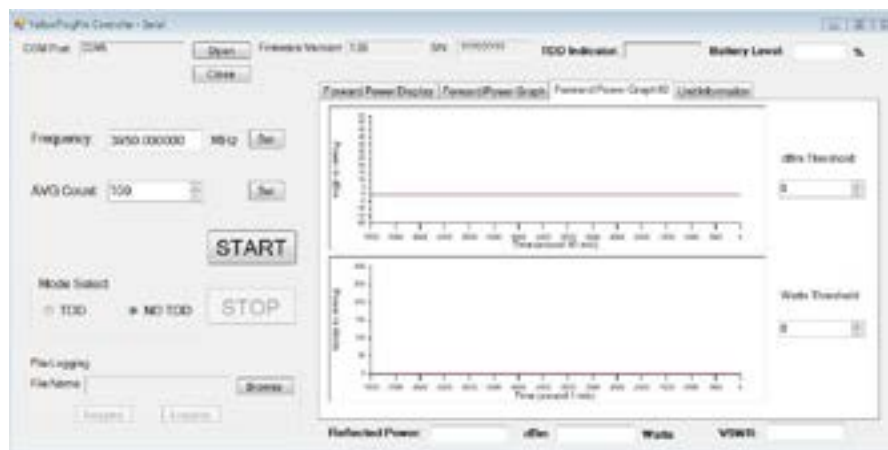
YellowFrog-Pro

WIDEBAND POWER METER

FREQUENCY RANGE:	500 MHz to 4000 MHz
FREQUENCY RESOLUTION:	2.5 kHz
MEASUREMENT BANDWIDTH:	20 MHz
INPUT POWER RANGE:	from 0 dBm to 52 dBm (1 mW to 150 Watts)
MEASUREMENT RESOLUTION:	20 MHz
MEASUREMENT ACCURACY:	0.65 dB
INSERTION LOSS:	Maximum 0.4 dB
INPUT VSWR:	Less than 1.2
INPUT SIGNAL:	CW, GSM, CDMA, Wi-MAX, LTE and so on
INPUT IMPEDANCE:	50 Ohm
RUNTIME BATTERY:	4-5 Hours
STABILITY:	Temperature compensation from -10 C to 40 C degrees



YellowFrog-Pro™ includes rugged transport case, PC software, power transformer and barrel plug



YellowFrog-Pro™ includes Windows 10 software allowing control and monitoring of all unit parameters including power over time