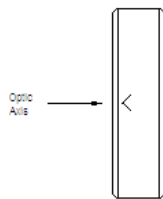
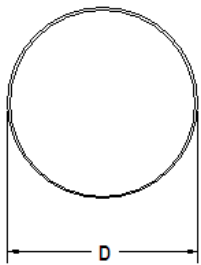


## Polarization Rotators / Depolarizers

Product Code: RT / DPL

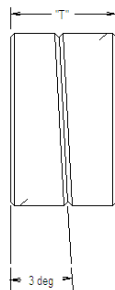
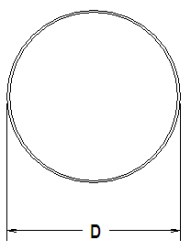


### Polarization Rotators

Substrate Material: Single Crystal Quartz  
 Diameter Tolerance: +0.000 / -0.010" [+0.00mm / -0.25mm]  
 Thickness Tolerance: +/-0.010" [+/-0.25mm]  
 Transmitted Wavefront: See Table @ 633nm  
 Surface Quality: 10-5 Per ANSI/OESC OP1.002-2006  
 Parallelism:  $\leq 2$  arc seconds  
 Chamfer: 0.38mm @ 45° typical  
 Clear Aperture:  $\geq$  central 85% of diameter

Wavelength (nm)	Diameter (mm) D	Part Number 45°	Transmitted Wavefront	Part Number 90°	Transmitted Wavefront
355.0	25.4 or 12.7	RT-D*-355.0-45	$\lambda/10$	RT-D*-355.0-90	$\lambda/10$
532.0	25.4 or 12.7	RT-D*-532.0-45	$\lambda/10$	RT-D*-532.0-90	$\lambda/10$
1053.0	25.4 or 12.7	RT-D*-1064.0-45	$\lambda/10$	RT-D*-1053.0-90	$\lambda/6$
1064.0	25.4 or 12.7	RT-D*-1064.0-45	$\lambda/10$	RT-D*-1064.0-90	$\lambda/6$

\*Specify desired component diameter 25.4mm (10) or 12.7mm (05). Polarization Rotators are available for  $\lambda = 248-1064$ nm, and are available as a coated or uncoated elements.



### UV Fused Silica / Crystal Quartz Depolarizers

Substrate Materials: UV Grade Fused Silica / Single Crystal Quartz  
 Diameter Tolerance: +0.000 / -0.010" [+0.00mm / -0.25mm]  
 Thickness Tolerance: +/-0.020" [+/-0.50mm]  
 Transmitted Wavefront:  $\lambda/4$  @ 633nm  
 Surface Quality: 10-5 Per ANSI/OESC OP1.002-2006  
 Chamfer: 0.15" [0.38mm] @ 45° typical  
 Clear Aperture:  $\geq$  central 85% of diameter  
 Assembly Method: Optically Contacted

Part Number	Diameter (mm) "D"	BBAR Coating Range (nm)
DPL-10-450-700	25.4	450-700
DPL-10- 630-1100	25.4	630-1100
DPL-10-1200-1550	25.4	1200-1550