

## PRODUCT DETAILS

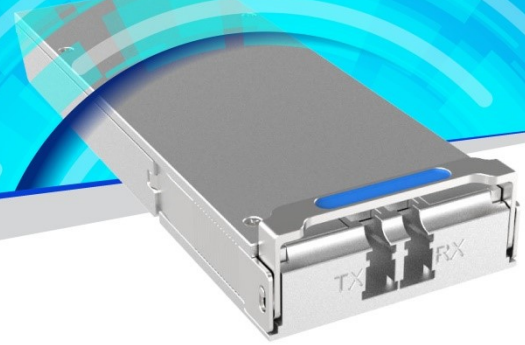
Eoptolink's Single-Mode 200GBase-LR4 CFP2 Transceiver



# EOLC-162HG-C-10-L

200G, CFP2

With LC interface



## Product Description

Eoptolink's CFP2 transceiver module is designed for use in 200 Gigabit Ethernet links over 10Km single mode fiber. The module has 8 independent electrical input/output channels operating up to 26.5625Gbps per channel. This transceiver consists of transmitter and receiver units, with operating on a set of 4 wavelengths on the ITU G.694.1 LAN-WDM grid near 1310nm. The transmitter path of the module incorporates a bi-directional PAM4 re-timer ASIC integrated with 4-channel EMLs and 4-channel modulator driver. On the receiver path, used 4-channel PIN arrays and 4-channel TIA arrays, along with the PAM4 re-timer.

## Features

- Up to 10km over SMF with KP4 FEC supported at the HOST side
- Duplex LC connector
- Supports 212.5Gbps aggregate bit rates
- Single 3.3V Power Supply
- Power dissipation < 12W
- 4\*26GBd DFB-based LAN-WDM transmitter
- PIN and TIA array on the receiver side
- Case temperature range: 0°C to 70°C(commercial)
- Class 1 FDA and IEC60825-1 Laser Safety Compliant

- Safety Certification: TUV/UL/FDA\*<sup>1</sup>
- RoHS Compliant

## Applications

- 200GBase-LR4 Ethernet

## Ordering Information



Part No.	Data Rate	Fiber	Distance* <sup>2</sup>	Interface	Temp.	DDMI
EOLC-162HG-C-10-L	212.5Gbps	SMF	10km	LC	0~70°C	Yes

\*1: For the latest certification information, please check with Eoptolink.

\*2: 10 km with 9/125µm SMF

\*The product image only for reference purpose

## Quality

Eoptolink Technology has passed many quality system verifications, established an internationally standardized quality assurance system and strictly implemented standardized management and control in the course of design, development, production, installation and service. For latest certification/accreditation numbers, please, contact us.



## Notice

Eoptolink reserves the right to make changes or discontinue any optical link product or service identified in this publication, without notice, in order to improve design and/or performance. Applications that are described herein for any of the optical link products are for illustrative purposes only. Eoptolink makes no representation or warranty that such applications will be suitable for the specified use without further testing or modification.

## Eoptolink Technology Inc., Ltd.

Add: No.127 West Wulian Street, Shuangliu District, Chengdu City 610213, P.R.China.

Tel: +86-028-6708 7983 (HQ); +86-028-6708 7999

Fax: +86-028-6708 7979

Email: [sales@eoptolink.com](mailto:sales@eoptolink.com)

<http://www.eoptolink.com/>