

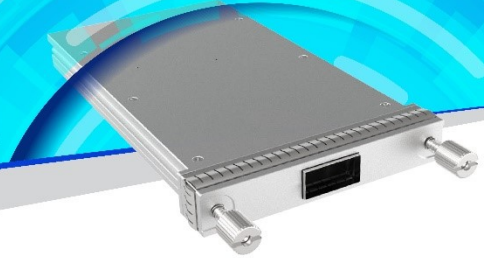
PRODUCT DETAILS

Eoptolink's 100G CFP PCT Optical Transceiver



EOLC-1HG-PCT-GH

100G, OTU4



Product Description

Eoptolink's EOLC-1HG-PCT-GH is designed for 100 Gigabit Ethernet & OTU4 links to convert CFP port to QSFP28 port. The module has 10 independent electrical input/output channels, and the operating speed of each channel is up to 11.2Gbps. This transceiver consists of a 10:4 Gearbox and a QSFP28 connector.

Features

- Compatible with CFP MSA Specification
- Compatible with QSFP28 MSA SFF 8661 Specification
- Supports 103Gbps and 112Gbps aggregate bit rates
- Single 3.3V Power Supply and Power
- Dissipation <5.5W
- Operating Case Temperature Range:
 - Standard: 0°C~+70°C
- MDIO interface with integrated Digital Diagnostic Monitoring
- Compliant with the EU RoHS 6 Environmental requirements.
- Safety Certification: TUV/UL/FDA *1
- RoHS Compliant

Applications

- Convert CFP port to QSFP28 port

Ordering Information



Part No.	Support CFP To QSFP28 PRBS*2	Form Factor Convert	Temp.
EOLC-1HG-PCT-GH	Yes	CFP→ QSFP28	0~70°C

*1: For the latest certification information, please check with Eoptolink.

*2: Only expect to state whether the converter supports the high speed data stream transportation between CFP and QSFP28

*The product image is only for reference purpose.

Quality

Eoptolink Technology has passed many quality system verifications, established an internationally standardized quality assurance system and strictly implemented standardized management and control in the course of design, development, production, installation and service. For latest certification/accreditation numbers, please contact us.



Notice

Eoptolink reserves the right to make changes or discontinue any optical link product or service identified in this publication, without notice, in order to improve design and/or performance. Applications that are described herein for any of the optical link products are for illustrative purposes only. Eoptolink makes no representation or warranty that such applications will be suitable for the specified use without further testing or modification.

Eoptolink Technology Inc., Ltd.

Add: No.127 West Wulian Street, Shuangliu District, Chengdu City 610213, P.R.China.

Tel: +86-028-6708 7983 (HQ); +86-028-6708 7999

Fax: +86-028-6708 7979

Email: sales@eoptolink.com

<http://www.eoptolink.com/>