

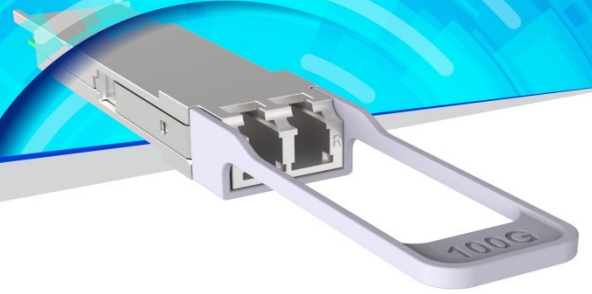
PRODUCT DETAILS

Eoptolink's 100G 80km QSFP28
Optical Transceiver



EOLQ-161HG-80-L7

Single-Mode, QSFP28
With LC interface



Product Description

Eoptolink's EOLQ-161HG-80-L7 transceiver module is designed for use in 100 Gigabit Ethernet links over 80km single mode fiber. The module has 4 independent electrical input/output channels operating up to 25.78Gbps per channel. This transceiver consists of transmitter/receiver units, with each operating on a set of 4 wavelengths on the ITU G.694.1 LAN-WDM grid near 1310nm. The transmitter path of the module incorporates 4-channel EMLs and 4-channel modulator driver. On the receiver path, a 1-channel SOA, 4-channel PD array, and 4-channel TIA array are used, along with NRZ retimers.

Features

- Supports 103Gbps
- Single 3.3V power supply
- Power dissipation : 5.5W
- Up to 80km over SMF
- Commercial case temperature range of 0°C to 70°C
- Four 25Gbps EML LAN-WDM lasers on transmitter side
- Integrated Tap-PD,VOA,SOA and PIN TIA on receiver side
- 4x25Gbps electrical interface
- Duplex LC receptacles
- I²C Interface with Integrated Digital Diagnostic Monitoring
- Safety Certification: TUV/UL/FDA*¹
- RoHS Compliant

Applications

- 100G 80km applications with FEC on host side
- 100G Datacom& Telecom connections



Ordering Information

Part No.	Data Rate	Fiber	Distance* ³	Interface	Temp.	DDMI
EOLQ-161HG-80-L7* ²	103Gbps	SMF	80km	LC	0°C~+70°C	Yes

*1: For the latest certification information, please check with Eoptolink.

*2: 80km applications with FEC on host side.

*3: Over SMF.

*The product image is only for reference purpose.

Quality

Eoptolink Technology has passed many quality system verifications, established an internationally standardized quality assurance system and strictly implemented standardized management and control in the course of design, development, production, installation and service. For latest certification/accreditation numbers, please, contact us.



Notice

Eoptolink reserves the right to make changes or discontinue any optical link product or service identified in this publication, without notice, in order to improve design and/or performance. Applications that are described herein for any of the optical link products are for illustrative purposes only. Eoptolink makes no representation or warranty that such applications will be suitable for the specified use without further testing or modification.

Eoptolink Technology Inc., Ltd.

Add: No.127 West Wulian Street, Shuangliu District, Chengdu City 610213, P.R.China.

Tel: +86-028-6708 7983 (HQ); +86-028-6708 7999

Fax: +86-028-6708 7979

Email: sales@eoptolink.com

<http://www.eoptolink.com/>