

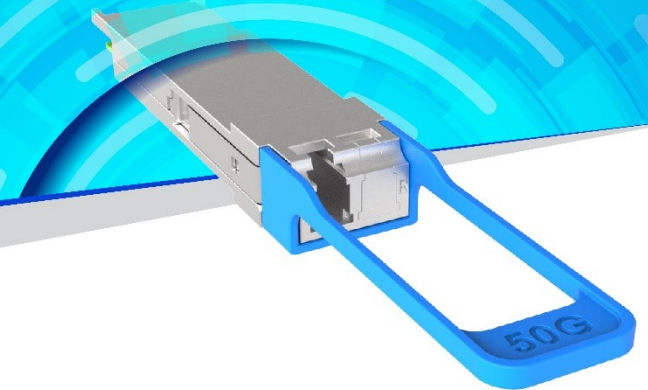
## PRODUCT DETAILS

Eoptolink's 50G PAM4 BIDI 40km QSFP28 Optical Transceiver



# EOLQ-BI1650G-40-XXL Series

Single-Mode, 50G QSFP28  
With LC interface



## Product Description

Eoptolink's QSFP28 50G PAM4 BIDI ER transceiver module is designed for use in 50 Gigabit Ethernet links over 40km single mode fiber. This module converts 2 channels of 26.5625Gbps (NRZ) electrical input data to 1 channel of 53.125Gbps (PAM4) optical signal. The optical transmitter and receiver interface of the module is compliant with the IEEE802.3cn and IEEE802.3cp. The electrical interface of the module is compliant with the OIF CEI-28G-VSR and optical/electrical connection and digital diagnostic interface compliant with QSFP28 MSA.

## Features

- Up to 40Km over SMF with KP4 FEC supported at the Host side
- BIDI LC connector
- 2x26.5625Gbps electrical interface
- APD and TIA on the receiver side
- Power dissipation < 3.5W
- I2C interface with integrated Digital Diagnostic Monitoring
- Commercial case temperature range: 0°C to 70°C
- Safety Certification: TUV/UL/FDA\*<sup>1</sup>
- RoHS Compliant

## Applications

- 50G Ethernet

## Ordering Information



Part No.	Data Rate	Wavelength (Tx)	Distance	Interface	Temp.	DDMI
EOLQ-BI1650G-40-ADL	53.125Gbps	1294.40nm	40km	LC	0~+70°C	Yes
EOLQ-BI1650G-40-DAL	53.125Gbps	1308.24nm	40km	LC	0~+70°C	Yes

\*1: For the latest certification information, please check with Eoptolink.

\*The product image is only for reference purpose.

## Quality

Eoptolink Technology has passed many quality system verifications, established an internationally standardized quality assurance system and strictly implemented standardized management and control in the course of design, development, production, installation and service. For latest certification/accreditation numbers, please, contact us.



## Notice

Eoptolink reserves the right to make changes or discontinue any optical link product or service identified in this publication, without notice, in order to improve design and/or performance. Applications that are described herein for any of the optical link products are for illustrative purposes only. Eoptolink makes no representation or warranty that such applications will be suitable for the specified use without further testing or modification.

## Eoptolink Technology Inc., Ltd.

Add: No.127 West Wulian Street, Shuangliu District, Chengdu City 610213, P.R.China.

Tel: +86-028-6708 7983 (HQ); +86-028-6708 7999

Fax: +86-028-6708 7979

Email: [sales@eoptolink.com](mailto:sales@eoptolink.com)

<http://www.eoptolink.com/>