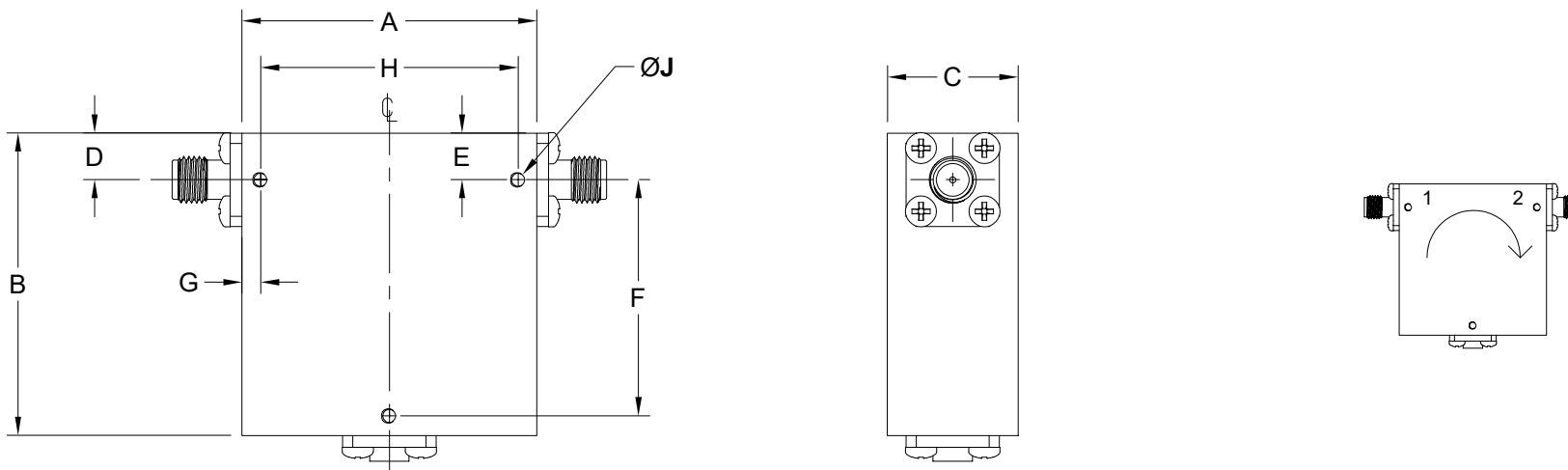


REVISION HISTORY

| REV | DESCRIPTION | DATE | APPROVED |
|-----|-----------------|-----------|----------|
| A | INITIAL RELEASE | 3/11/2024 | DA |



DIMENSIONS IN INCHES

| FIG. | A | B | C | D | E | F | G | H | J |
|------|------|------|------|------|------|------|------|------|--------------------------|
| 1 | 1.58 | 1.62 | 0.70 | 0.25 | 0.25 | 1.27 | 0.10 | 1.38 | #2-56 X 0.15 DP. |
| 2 | 1.25 | 1.25 | 0.70 | 0.25 | 0.25 | 0.90 | 0.10 | 1.05 | #2-56 X 0.15 DP. |
| 3 | 1.00 | 1.00 | 0.50 | 0.25 | 0.25 | 0.68 | 0.10 | 0.80 | #2-56 X 0.15 DP. |
| 4 | 0.86 | 0.98 | 0.50 | 0.25 | 0.25 | 0.63 | 0.10 | 0.66 | #2-56 X 0.15 DP. |
| 5 | 0.50 | 0.70 | 0.50 | 0.25 | 0.18 | 0.46 | 0.08 | 0.34 | #2-56 X 0.15 DP. |
| 6 | 0.62 | 0.78 | 0.50 | 0.25 | 0.25 | 0.43 | 0.10 | 0.42 | #2-56 X 0.15 DP. |
| 7 | 0.75 | 0.75 | 0.38 | 0.19 | 0.19 | 0.43 | 0.10 | 0.55 | #2-56 X 0.15 DP. |
| 8 | 0.50 | 0.58 | 0.38 | 0.19 | 0.19 | -- | 0.10 | 0.30 | #0-80 X 0.08 DP., 2 PLC. |

THIRD ANGLE PROJECTION:

UNLESS OTHERWISE NOTED, DIMENSIONS ARE IN INCHES. TOLERANCES ARE:

FRACTIONS: ±1/64 ANGLES: ±1/2° MACHINED FINISH: 63 OR BETTER

| DECIMALS | |
|----------|---------|
| 2 PLACE | 3 PLACE |
| ±.01 | ±.003 |

| APPROVALS | DATE |
|--------------------|---------|
| DRAWN: Dirk Aubram | 3/11/24 |
| CHCKD: | |
| APRVD: | |
| MATERIAL: | |
| TREATMENT: | |
| FINISH: | |

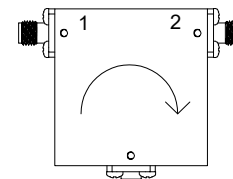
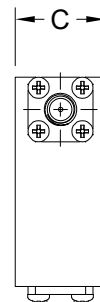
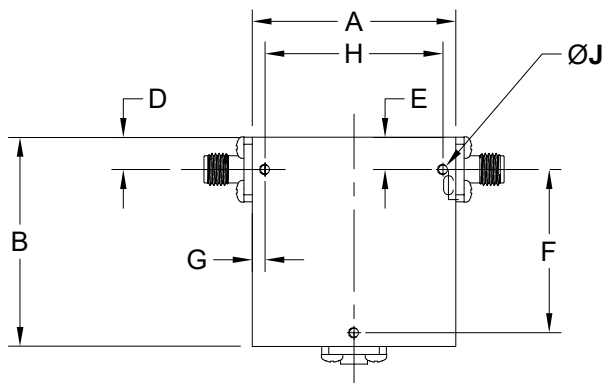
THE INFORMATION IN THIS DRAWING IS PROPRIETARY AND SHALL NOT BE USED OR DISCLOSED WITHOUT THE PRIOR WRITTEN CONSENT OF IMPULSE TECHNOLOGIES INC.

Isolator, SMA F OUTLINE

| SIZE | CAGE CODE | TTI DRAWING# | REVISION |
|-------|--------------|--------------|----------|
| 6CDA9 | | OTL-ISOCOAX | A |
| SCALE | MODEL# | | SHEET |
| 1:2 | ITiXX-XX-ITi | | 1/2 |

REVISION HISTORY

| REV | DESCRIPTION | DATE | APPROVED |
|-----|-----------------|-----------|----------|
| A | INITIAL RELEASE | 3/11/2024 | DA |



OCTAVE BAND CIRCULATORS

| FREQ. (GHz) | ISO (dB) TYP. | ISO (dB) MIN. | IL (dB) TYP. | IL (dB) MAX. | VSWR TYP. | VSWR MAX. | POWER (W) AVG. | POWER (W) PK. | MODEL# | OUTLINE DRAWING |
|-------------|---------------|---------------|--------------|--------------|-----------|-----------|----------------|---------------|----------------|-----------------|
| 1.0-2.0 | 20 | 15 | 0.35 | 0.5 | 1.25 | 1.35 | 2 | 20 | ITi1-2-ITI | |
| 2.0-4.0 | 20 | 18 | 0.4 | 0.5 | 1.25 | 1.30 | 2 | 20 | ITi2-4-ITI | FIG 1 |
| 2.6-5.2 | 20 | 18 | 0.4 | 0.5 | 1.25 | 1.30 | 2 | 20 | ITi2.6-5.2-ITI | FIG 1 |
| 3.0-6.0 | 21 | 19 | 0.35 | 0.4 | 1.25 | 1.30 | 2 | 20 | ITi3-6-ITI | FIG 2 |
| 4.0-8.0 | 22 | 20 | 0.35 | 0.4 | 1.18 | 1.25 | 2 | 20 | ITi4-8-ITI | FIG 3 |
| 5.0-10.0 | 16 | 15 | 0.9 | 1 | 1.4 | 1.45 | 2 | 20 | ITi5-10-ITI | FIG 7 |
| 6.0-12.4 | 19 | 17 | 0.5 | 0.6 | 1.3 | 1.35 | 2 | 20 | ITi6-12-ITI | FIG 6 |
| 8.0-12.4 | 22 | 20 | 0.35 | 0.5 | 1.18 | 1.25 | 2 | 30 | ITi8-12.4-ITI | FIG 4 |
| 12.0-18.0 | 22 | 20 | 0.45 | 0.5 | 1.18 | 1.25 | 2 | 30 | ITi12-18-ITI | FIG 5 |

WIDE BAND CIRCULATORS

| FREQ. (GHz) | ISO (dB) TYP. | ISO (dB) MIN. | IL (dB) TYP. | IL (dB) MAX. | VSWR TYP. | VSWR MAX. | POWER (W) AVG. | POWER (W) PK. | MODEL# | OUTLINE DRAWING |
|-------------|---------------|---------------|--------------|--------------|-----------|-----------|----------------|---------------|----------------|-----------------|
| 2.0-8.0 | | 10 | | 1.5 | | 2 | 2 | 20 | ITi2-8-ITI | FIG 1 |
| 6.0-18.0 | 15 | 14 | 0.9 | 1 | 1.45 | 1.5 | 2 | 20 | ITi6-18-ITI | FIG 8 |
| 8.0-18.0 | 17 | 16 | 0.7 | 0.8 | 1.4 | 1.45 | 2 | 30 | ITi8-18-ITI | FIG 5 |
| 18.0-26.5 | 20 | 18 | 0.7 | 0.8 | 1.35 | 1.4 | 2 | 30 | ITi18-26.5-ITI | FIG 5 |
| 26.5-40.0 | 15 | 14 | 0.8 | 1.0 | 1.45 | 1.5 | 2 | 30 | ITi26.5-40-ITI | FIG 5 |

THIRD ANGLE PROJECTION:

UNLESS OTHERWISE NOTED, DIMENSIONS ARE IN INCHES. TOLERANCES ARE:

FRACTIONS: ±1/64 ANGLES: ±1/2° MACHINED FINISH: 63 OR BETTER

| DECIMALS | |
|----------|---------|
| 2 PLACE | 3 PLACE |
| ±.01 | ±.003 |

| APPROVALS | DATE |
|--------------------|---------|
| DRAWN: Dirk Aubram | 3/11/24 |
| CHCKD: | |
| APRVD: | |
| MATERIAL: | |
| TREATMENT: | |
| FINISH: | |

THE INFORMATION IN THIS DRAWING IS PROPRIETARY AND SHALL NOT BE USED OR DISCLOSED WITHOUT THE PRIOR WRITTEN CONSENT OF IMPULSE TECHNOLOGIES INC.

Isolator, SMA F OUTLINE

| SIZE | CAGE CODE | ITI DRAWING# | REVISION |
|-------|--------------|--------------|----------|
| 6CDA9 | | OTL-ISOCOAX | A |
| SCALE | MODEL# | | SHEET |
| 1:2 | ITiXX-XX-ITI | | 2/2 |

