

General Description

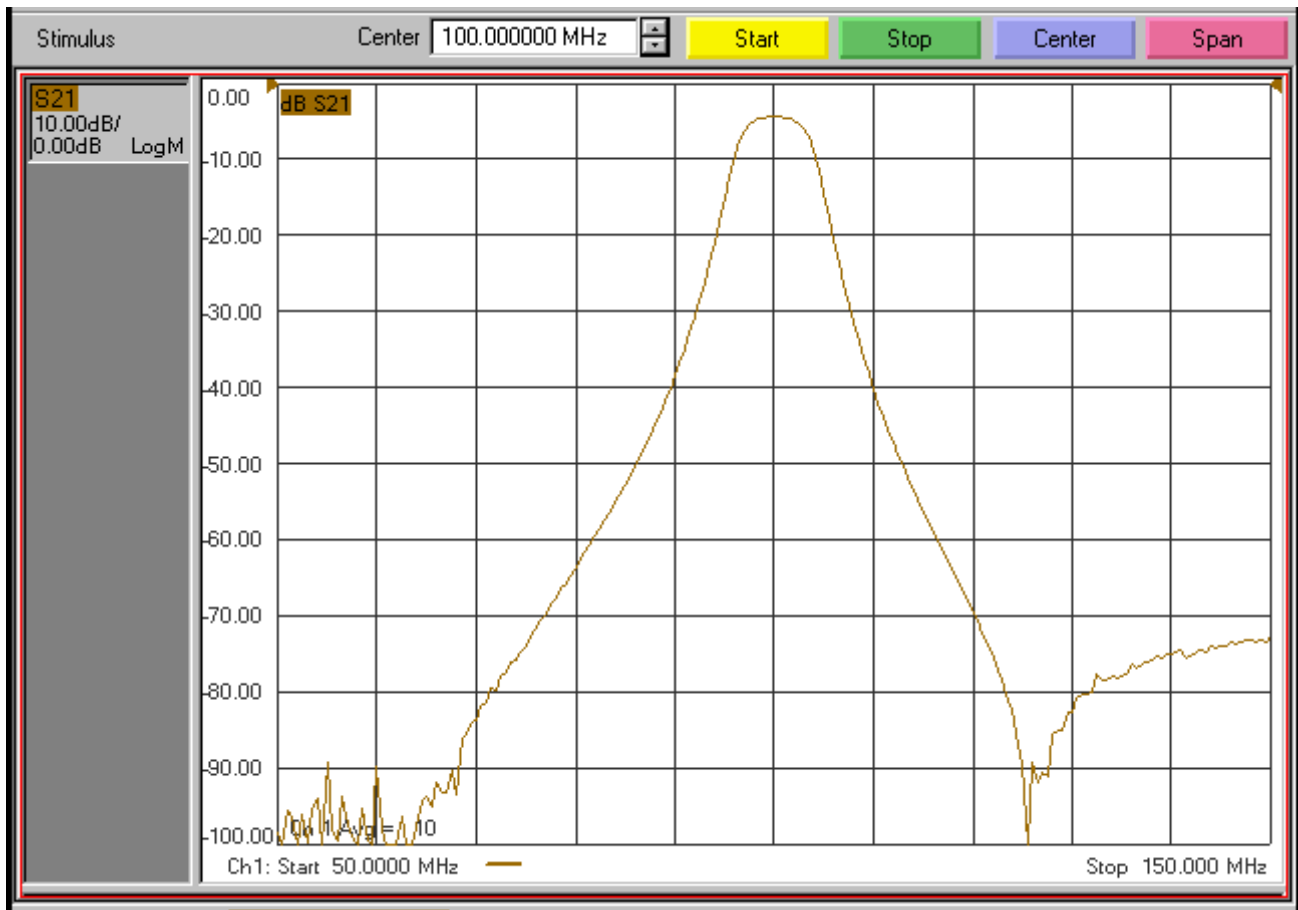
KR Electronics part number 2618-3-SMA-1 is a 100 MHz band-pass filter. The filter has a min 1 dB bandwidth of 4 MHz. Other center frequencies are available. Please consult the factory.

Features

- 100 MHz Bandpass Filter
- 4 MHz minimum 1 dB Bandwidth
- 50 Ω Source and Load
- SMA Connectors
- 1.25" x 0.6" x 0.6"
- Surface Mount also available

Typical Performance

Overall Response
(10 dB/div)



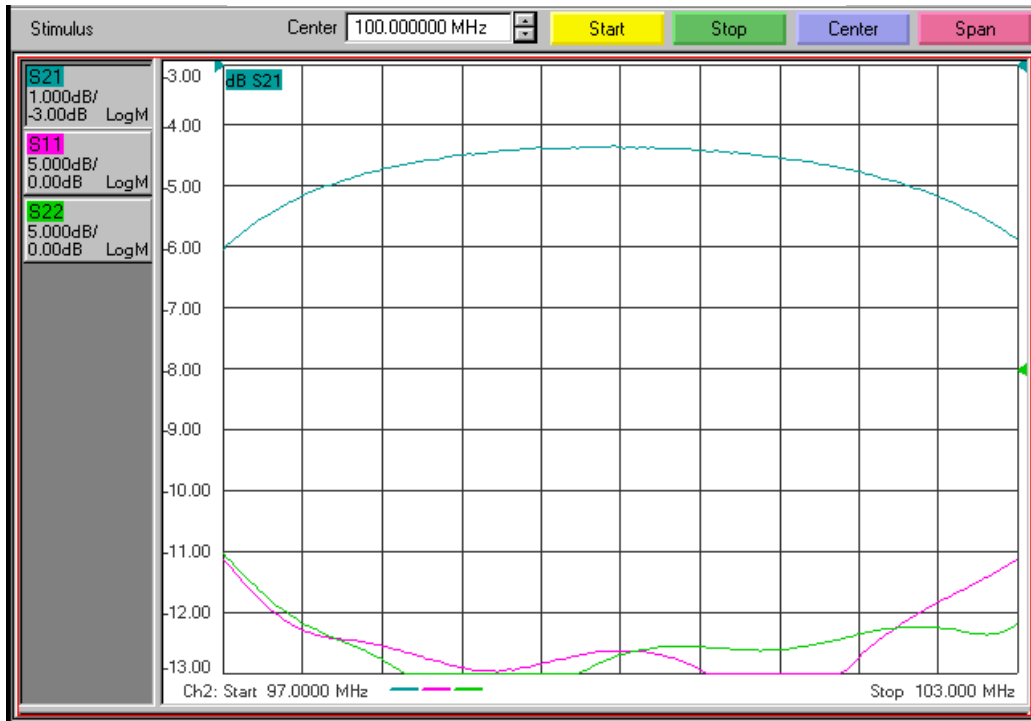
KR Electronics, Inc.
91 Avenel Street
Avenel, NJ 07001

Web www.krfilters.com
Email sales@krfilters.com
Phone (732) 636-1900
Fax (732) 636-1982

KR Electronics 2618-3-SMA-1

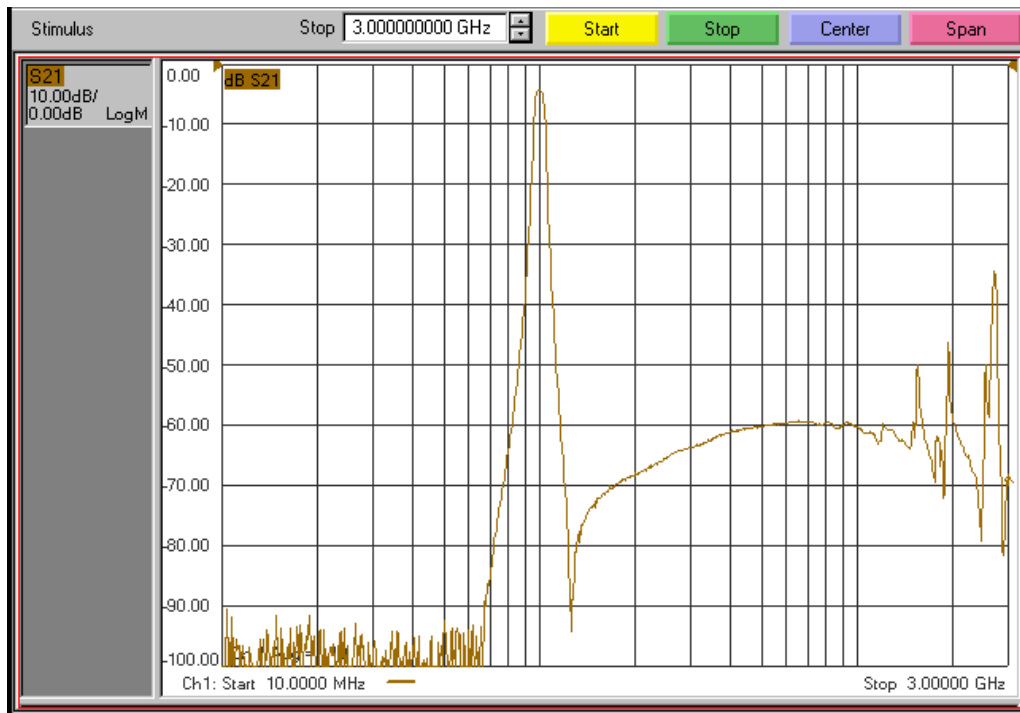
Passband Amplitude & Return Loss

(1 dB/div & 5 dB/div)



Overall Response

(10 dB/div)



KR Electronics, Inc.
91 Avenel Street
Avenel, NJ 07001

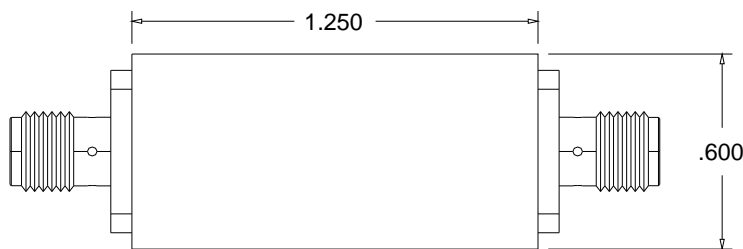
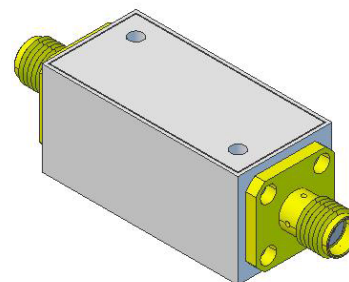
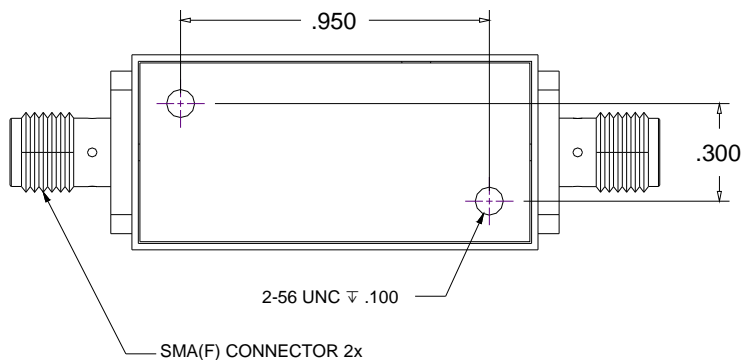
Web www.krfilters.com
Email sales@krfilters.com
Phone (732) 636-1900
Fax (732) 636-1982

KR Electronics 2618-3-SMA-1

Specifications

Parameter	Specification
Filter type	Bandpass
Center Frequency (Fc)	100 MHz
Insertion Loss at Fc	6 dBa max 4.4 dBa typical
1 dB Bandwidth	4 MHz min 5.5 MHz typical
3 dB Bandwidth	7 MHz typical
20 dB Bandwidth	13.5 MHz typical
40 dB Bandwidth	23.3 MHz typical
60 dB Bandwidth	39 MHz typical
Source and Load	50 Ω

Physical Dimensions



Notes:

1. Dimensions in inches
2. Tolerance ± 0.010 "
3. Metal Case
4. SMA (F) Connectors
5. Also available in surface mount package

KR Electronics, Inc.
91 Avenel Street
Avenel, NJ 07001

Web www.krfilters.com
Email sales@krfilters.com
Phone (732) 636-1900
Fax (732) 636-1982