

# KR Electronics, Inc.

## General Description

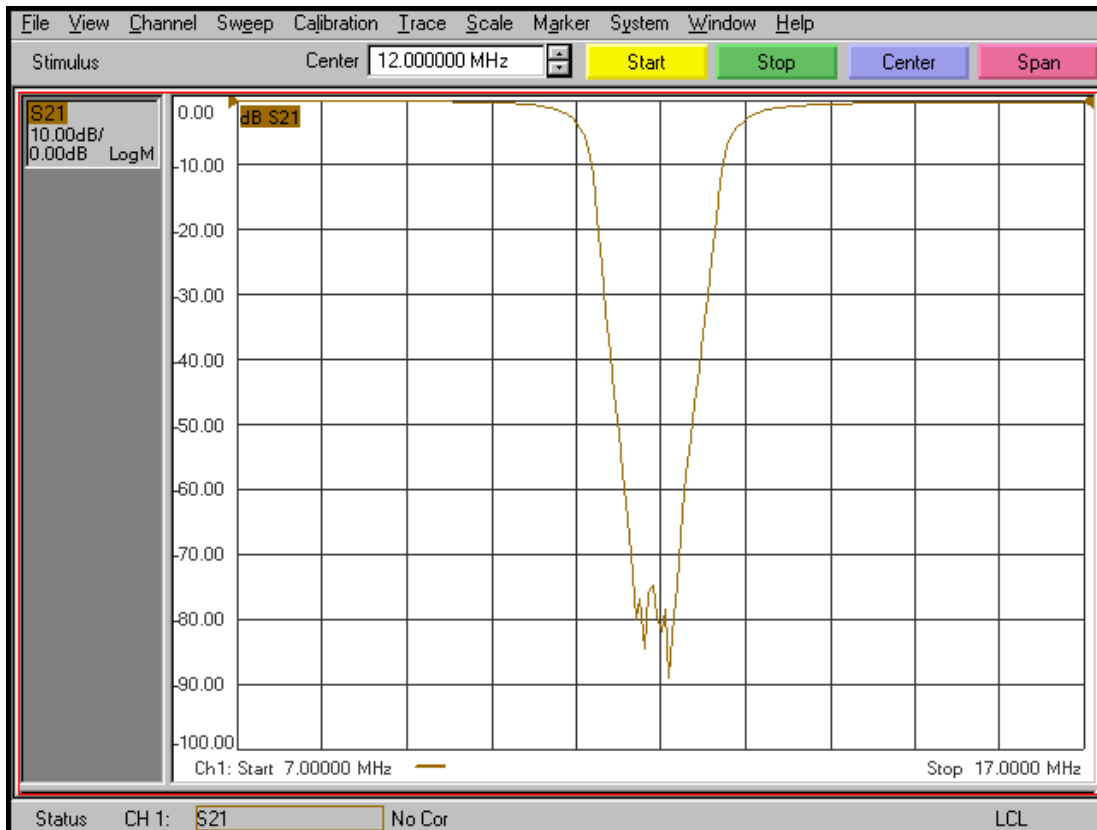
KR Electronics part number 3203-12 is a 12 MHz Bidirectional Absorptive Notch filter. The filter has a 1.25 dB bandwidth of 3.6 MHz max. Other notch frequencies and are bandwidths available. Please consult the factory.

### Features

- 12 MHz Bidirectional Absorptive Notch
- Low VSWR even in Notch
- 2.8 MHz typical 3 dB Bandwidth
- High Notch Rejection
- 50  $\Omega$  Source and Load
- SMA Connectors

## Typical Performance

**Overall Response**  
(10 dB/div)

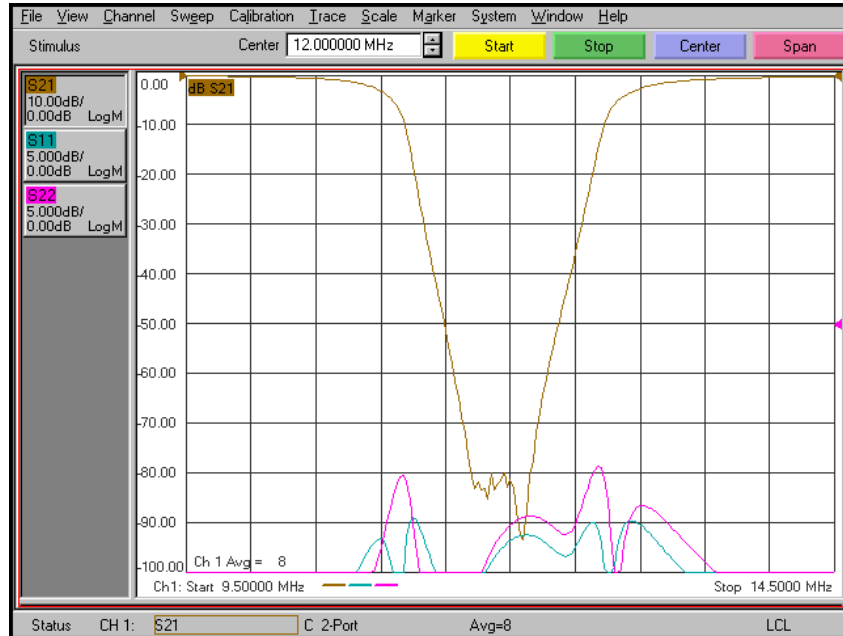


KR Electronics, Inc.  
91 Avenel Street  
Avenel, NJ 07001

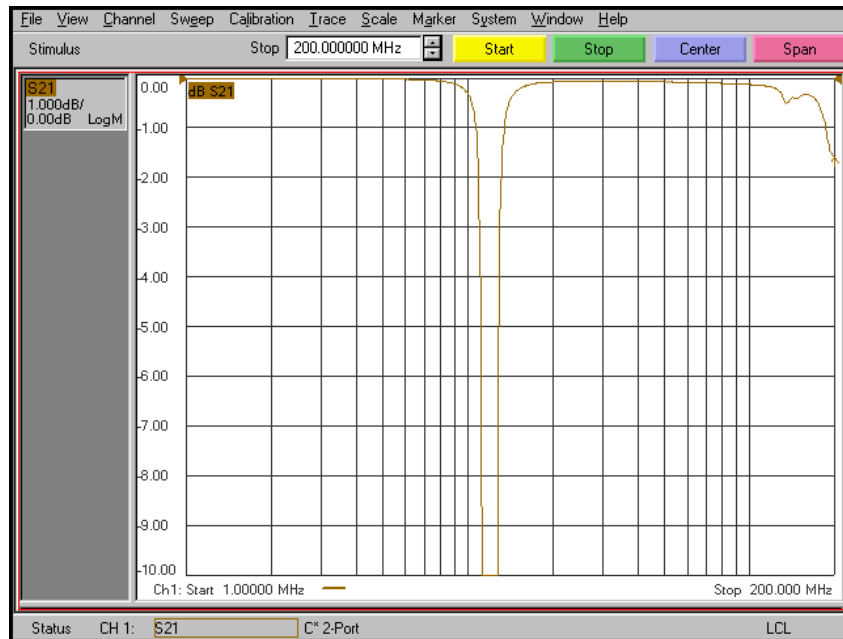
Web [www.krfilters.com](http://www.krfilters.com)  
Email [sales@krfilters.com](mailto:sales@krfilters.com)  
Phone (732) 636-2500  
Fax (732) 636-2582

Typical Performance

Response & Return Loss  
(10 dB/div & 5 dB/div)



Overall Response  
(1 dB/div)

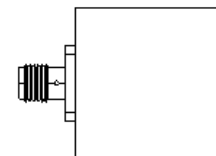
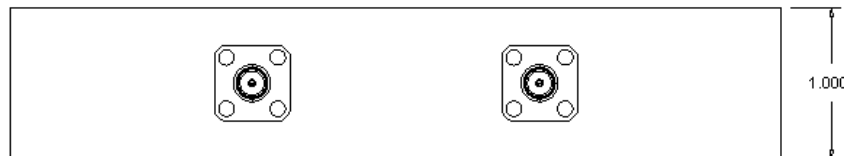
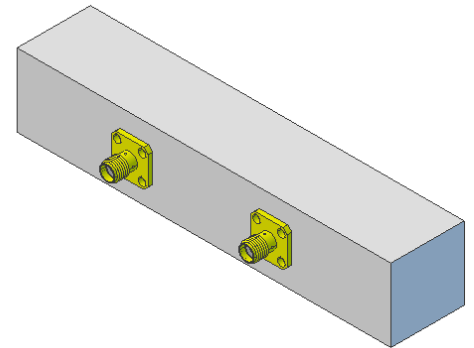
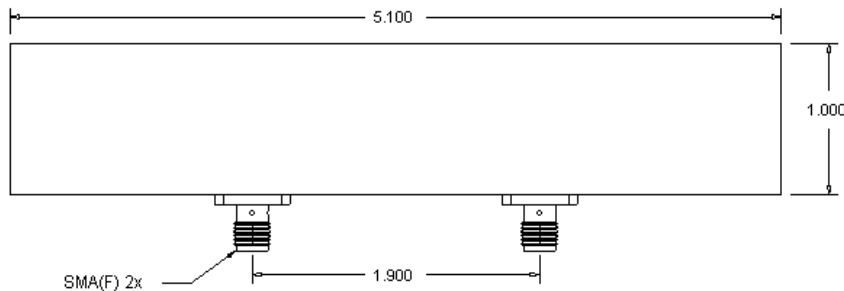


# KR Electronics 3203-12

## Specifications

Parameter	Specification	Notes
Filter type	Bidirectional Absorptive Notch	
Notch Frequency	12 MHz	
Insertion Loss at 10.2 MHz & 13.8 MHz	1.25 dB max	< 0.6 dB typical
Insertion Loss at 11.85 to 12.15 MHz	45 dB min	> 70 dB typical
Input & Output Return Loss 10 to 13.8 MHz	12 dB min	>15 dB typical
3 dB Bandwidth	2 MHz typical	
45 dB Bandwidth	0.96 MHz typical	
Source and Load	50 Ω	

## Physical Dimensions



**Notes:**

1. Dimensions in inches
2. Rectangular case

KR Electronics, Inc.  
91 Avenel Street  
Avenel, NJ 07001

Web [www.krfilters.com](http://www.krfilters.com)  
Email [sales@krfilters.com](mailto:sales@krfilters.com)  
Phone (732) 636-2500  
Fax (732) 636-2582