

KR Electronics, Inc.

General Description

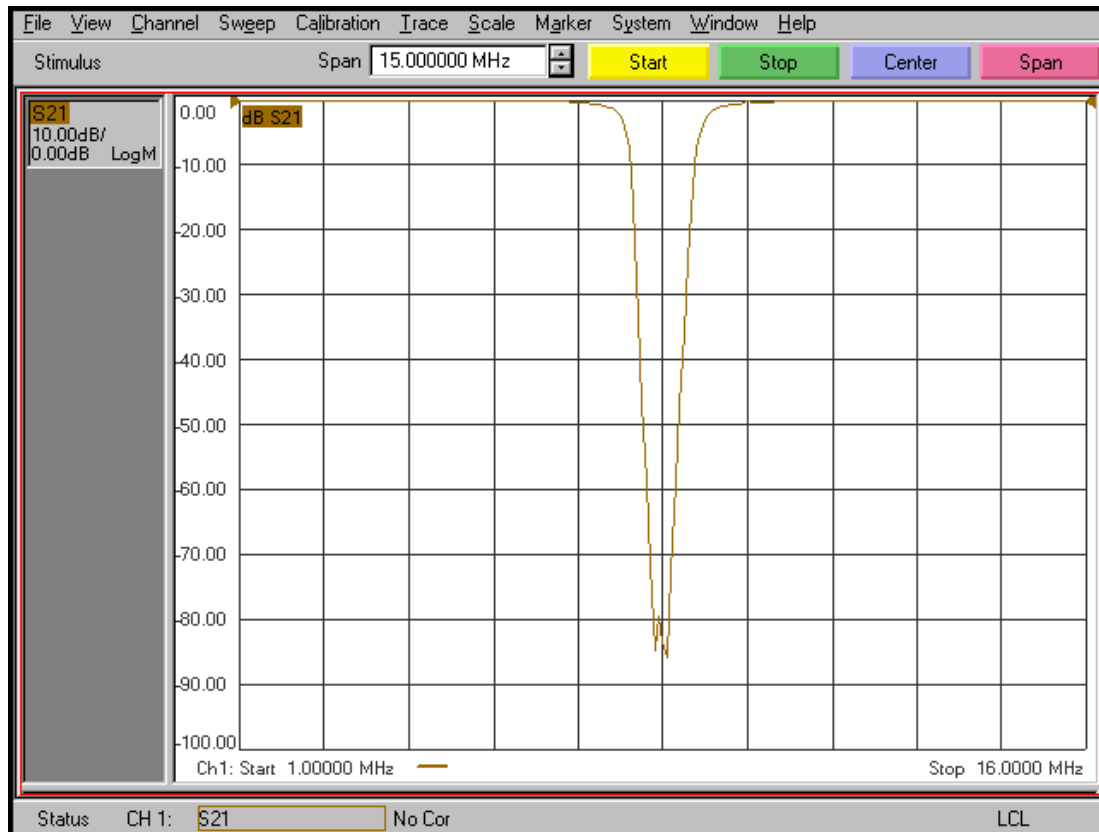
KR Electronics part number 3203-8.5 is a 8.5 MHz Bidirectional Absorptive Notch filter. The filter has a 1.25 dB bandwidth of 3 MHz max. Other notch frequencies and are bandwidths available. Please consult the factory.

Features

- 8.5 MHz Bidirectional Absorptive Notch
- Low VSWR even in Notch
- High Notch Rejection
- 50 Ω Source and Load
- SMA Connectors

Typical Performance

Overall Response
(10 dB/div)

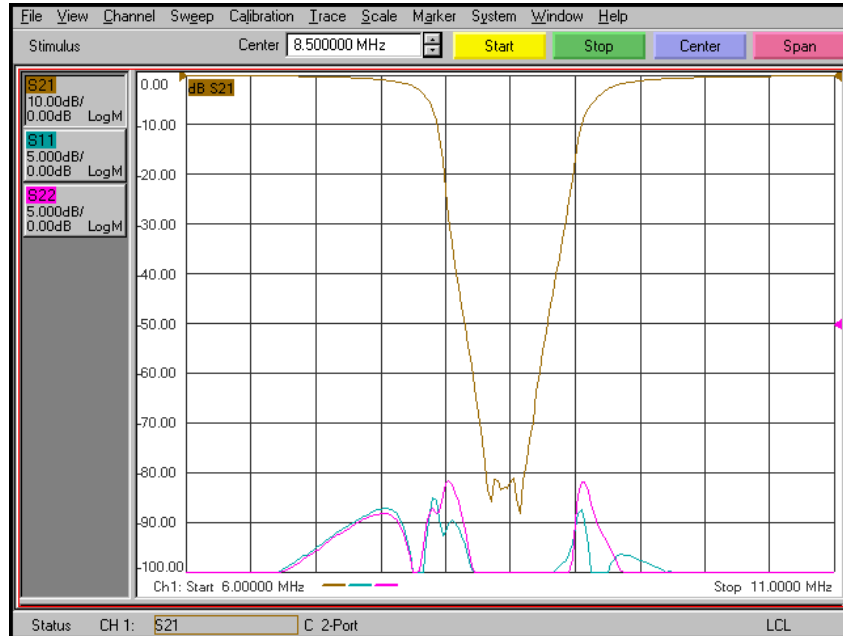


KR Electronics, Inc.
91 Avenel Street
Avenel, NJ 07001

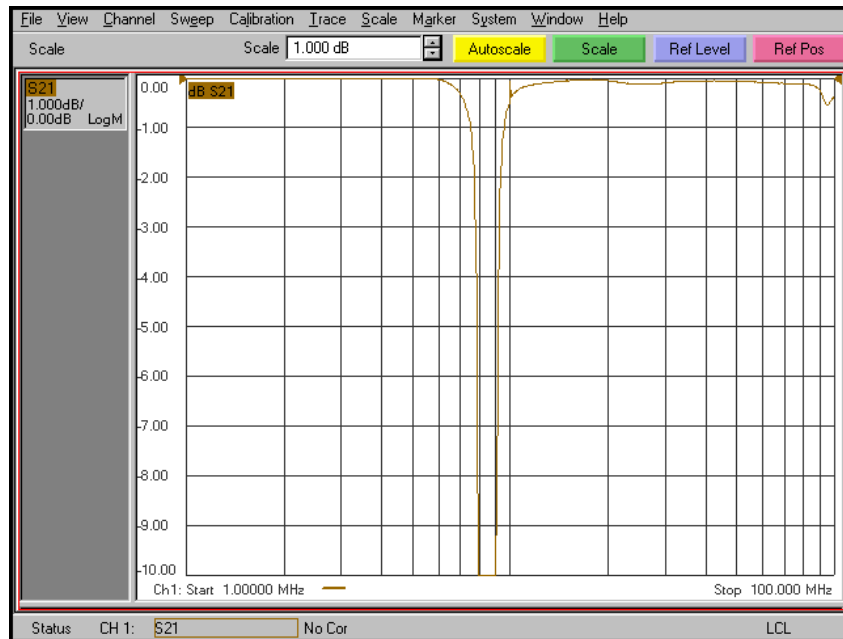
Web www.krfilters.com
Email sales@krfilters.com
Phone (732) 636-2500
Fax (732) 636-2582

Typical Performance

Response & Return Loss (10 dB/div & 5 dB/div)



Overall Response (1 dB/div)



KR Electronics, Inc.
91 Avenel Street
Avenel, NJ 07001

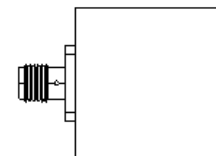
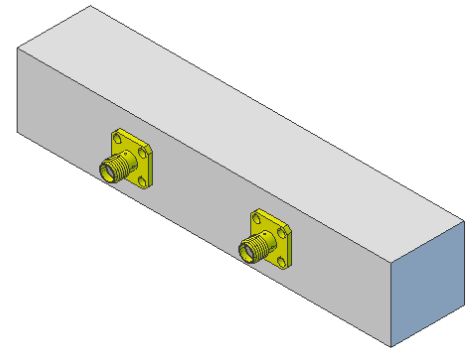
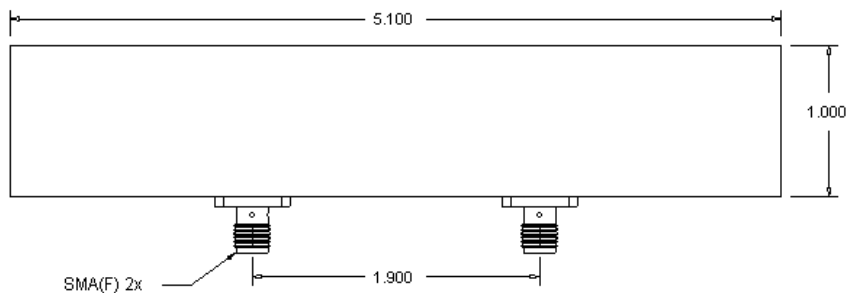
Web: www.krfilters.com
Email: sales@krfilters.com
Phone: (732) 636-2500
Fax: (732) 636-2582

KR Electronics 3203-8.5

Specifications

Parameter	Specification	Notes
Filter type	Bidirectional Absorptive Notch	
Notch Frequency	8.5 MHz	
Insertion Loss at 7 MHz & 10 MHz	1.25 dB max	< 0.6 dB typical
Insertion Loss at 8.35 to 8.65 MHz	45 dB min	> 70 dB typical
Input & Output Return Loss 7 to 10.MHz	12 dB min	20 dB typical
3 dB Bandwidth	1.45 MHz typical	
45 dB Bandwidth	700 KHz typical	
Source and Load	50 Ω	

Physical Dimensions



Notes:

1. Dimensions in inches
2. Rectangular case

KR Electronics, Inc.
91 Avenel Street
Avenel, NJ 07001

Web www.krfilters.com
Email sales@krfilters.com
Phone (732) 636-2500
Fax (732) 636-2582