

General Description

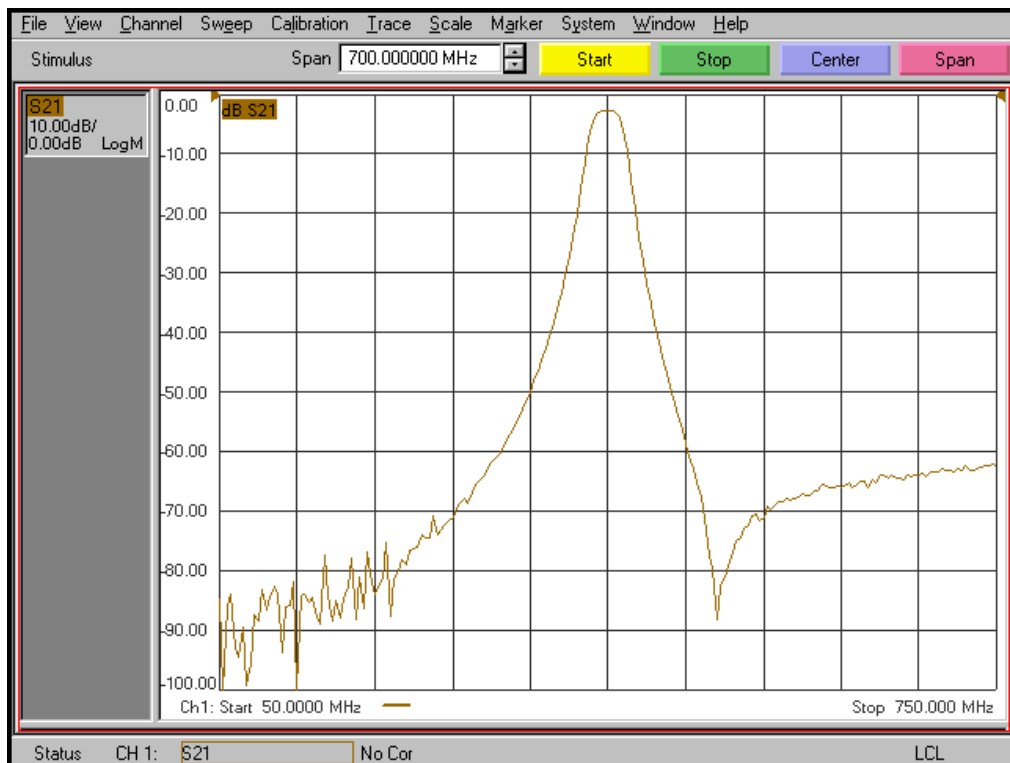
KR Electronics part number 3208-SMA is a 400 MHz bandpass filter. The filter has a typical 3 dB bandwidth of 29 MHz and a typical 50 dB bandwidth of 139 MHz. Other center frequencies and bandwidths are available. Please consult the factory.

Features

- 400 MHz Bandpass Filter
- 95 MHz typical 3 dB Bandwidth
- 139 MHz typical 50 dB Bandwidth
- 50 Ω Source and Load
- SMA Connectors
- Also available in SMD package

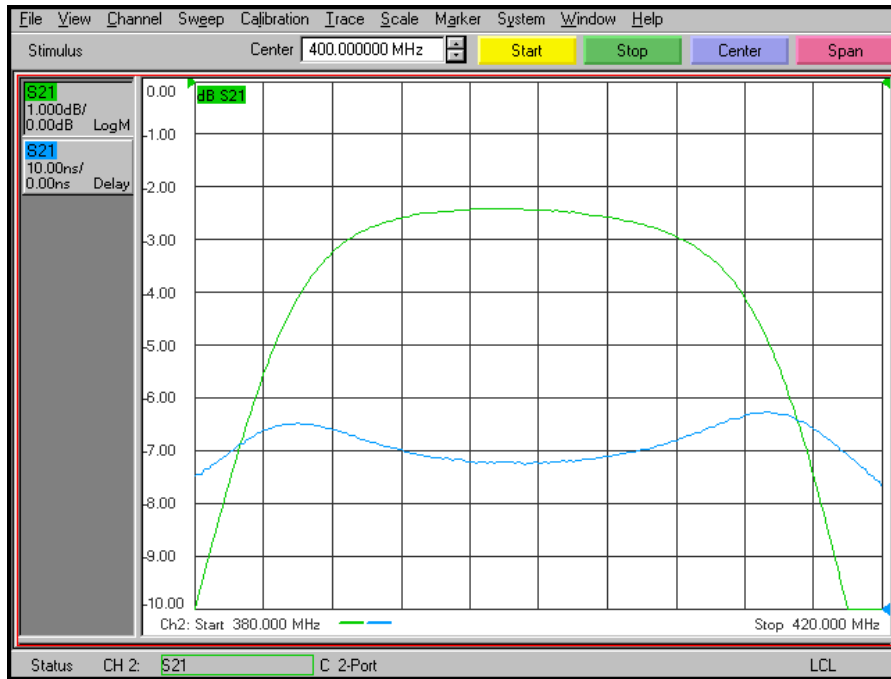
Typical Performance

Overall Response (10 dB/div)

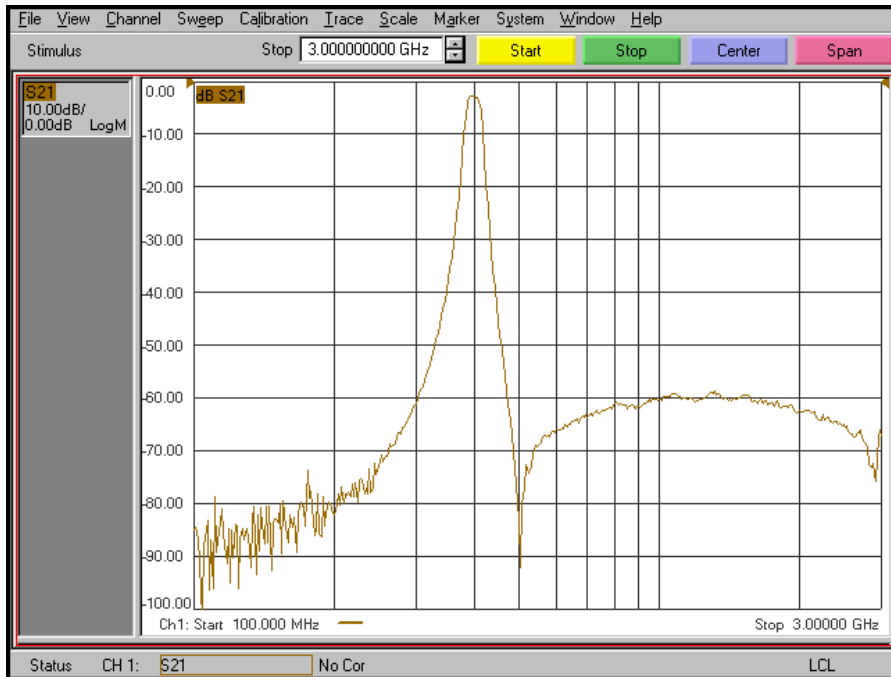


KR Electronics 3208-SMA

Passband Amplitude & Group Delay (1 dB/div & 10 nsec/div)



Overall Response (10 dB/div)



KR Electronics, Inc.
91 Avenel Street
Avenel, NJ 07001

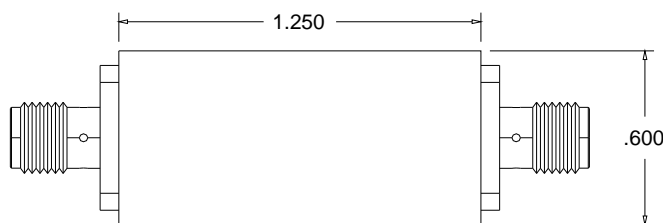
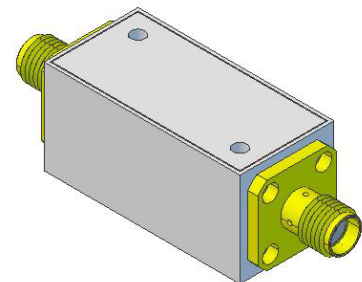
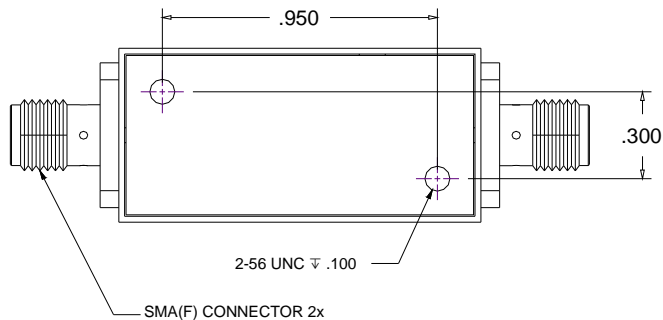
Web www.krfilters.com
Email sales@krfilters.com
Phone (732) 636-1900
Fax (732) 636-1982

KR Electronics 3208-SMA

Specifications

Parameter	Specification	
Filter type	Bandpass	
Center Frequency	400 MHz	
Insertion Loss	3.25 dB max	2.4 dB typical
1 dB Bandwidth	22 MHz typical	
3 dB Bandwidth	20 MHz min	29 MHz typical
40 dB Bandwidth	104 MHz typical	
50 dB Bandwidth	200 MHz max	139 MHz typical
Source and Load	50 Ω	

Physical Dimensions



Notes:

1. Dimensions in inches
2. Metal Case
3. SMA(F) Connectors
4. Also available in surface mount package

KR Electronics, Inc.
91 Avenel Street
Avenel, NJ 07001

Web www.krfilters.com
Email sales@krfilters.com
Phone (732) 636-1900
Fax (732) 636-1982