

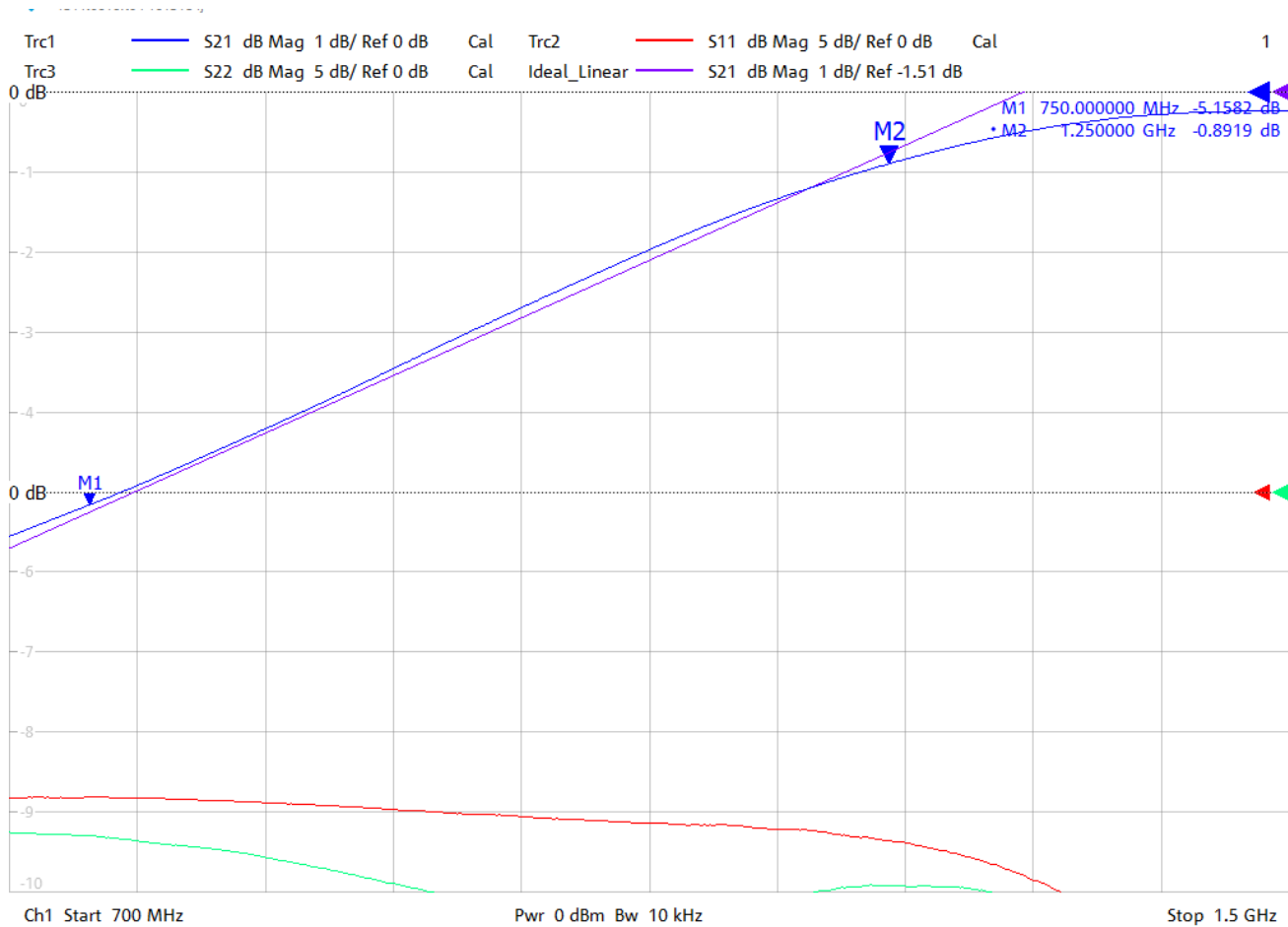
General Description

KR Electronics part number 3362-SMA is a 750 to 1250 MHz linear slope equalizer. The slope is 4.5 dB \pm 0.5 dB. Other frequencies are available. Please consult the factory.

Features

- Linear Slope Equalizer
- 750 MHz to 1250 MHz
- Slope 4.5 dB \pm 0.5 dB
- Deviation from Linear \pm 0.5 dB max
- 50 Ω Source and Load
- SMA Connectors
- Other frequencies available

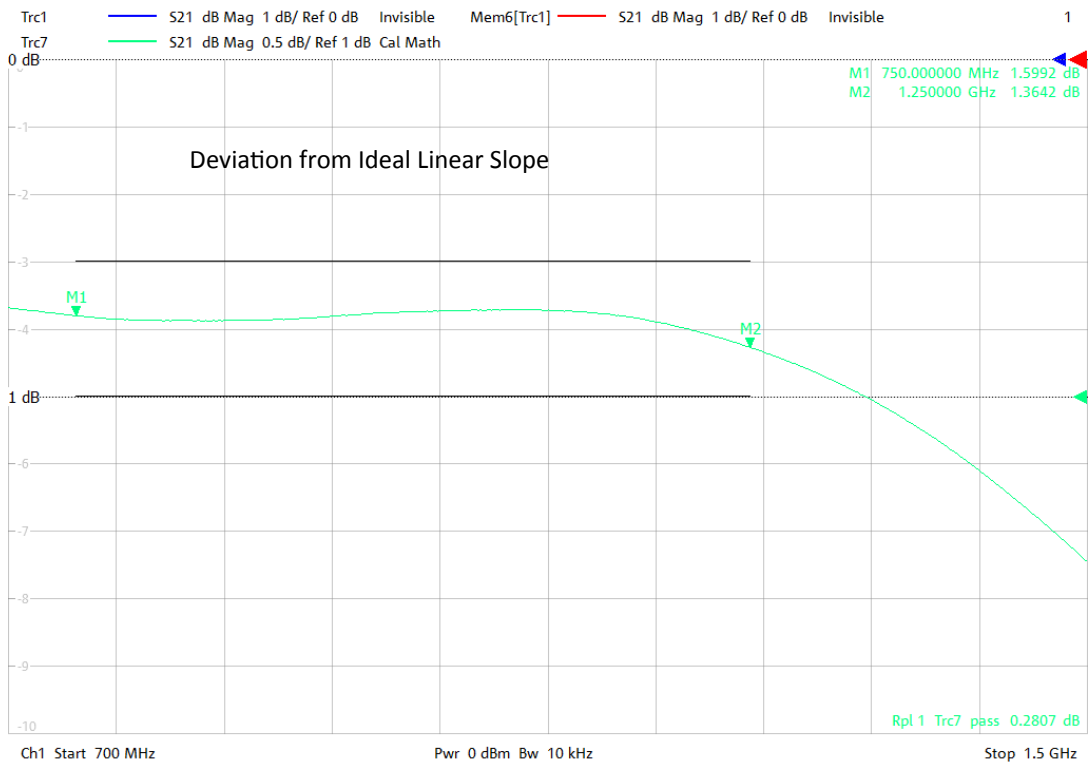
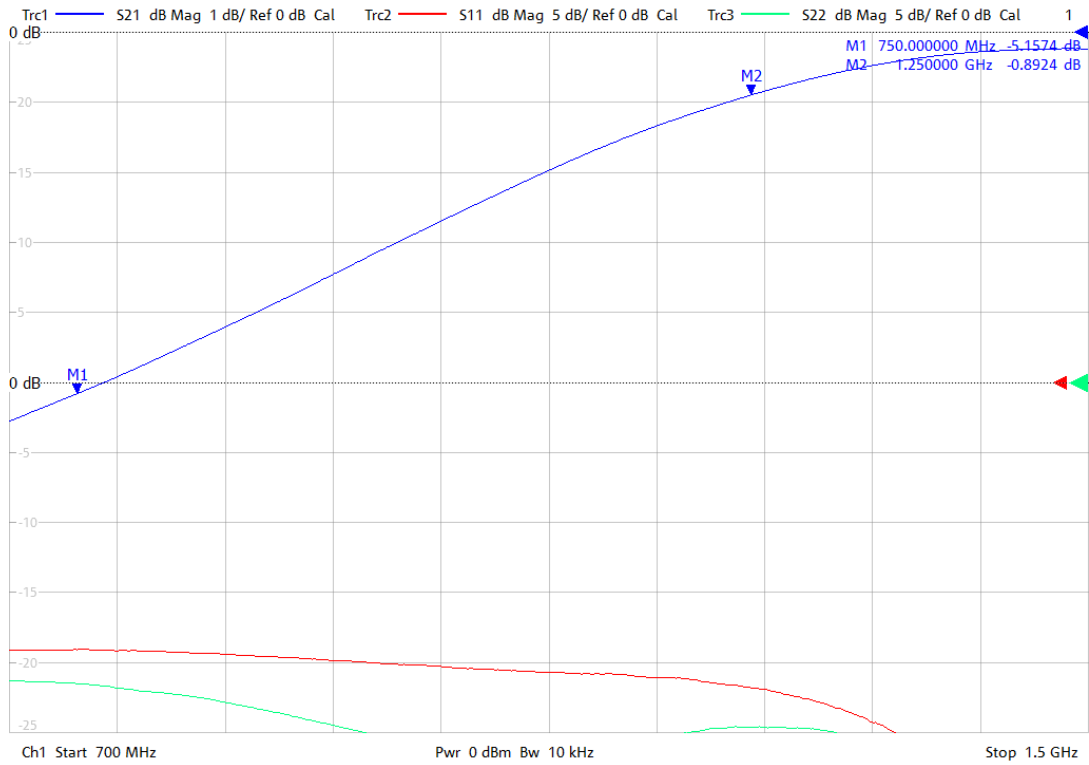
Typical Performance



KR Electronics, Inc.
91 Avenel Street
Avenel, NJ 07001

Web www.krfilters.com
Email sales@krfilters.com
Phone (732) 636-1900
Fax (732) 636-1982

KR Electronics 3362-SMA



KR Electronics, Inc.
91 Avenel Street
Avenel, NJ 07001

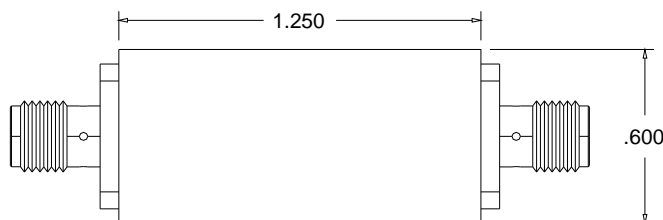
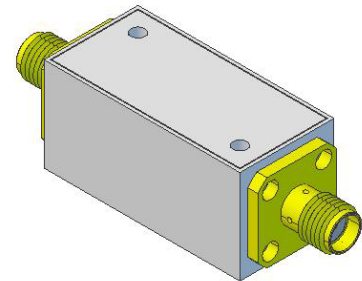
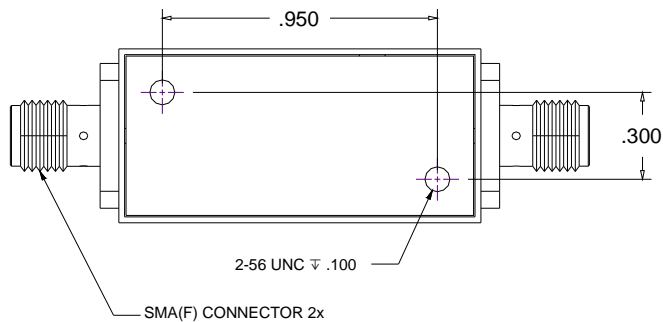
Web www.krfilters.com
Email sales@krfilters.com
Phone (732) 636-1900
Fax (732) 636-1982

KR Electronics 3362-SMA

Specifications

Parameter	Specification	
Filter type	Equalizer	
Frequency Band	750 to 1250 MHz	
Insertion Loss at 1250 MHz	2 dBa max	0.9 dBa typical
Loss at 750 MHz - Loss at 1250 MHz	4.5 dB \pm 0.5 dB	
Deviation from Linear Slope 750 MHz to 1250 MHz	\pm 0.5 dB max	
Source and Load	50 Ω	

Physical Dimensions



Notes:

1. Dimensions in inches
2. Metal Case
3. SMA(F) Connectors
4. Also available in surface mount package

KR Electronics, Inc.
91 Avenel Street
Avenel, NJ 07001

Web www.krfilters.com
Email sales@krfilters.com
Phone (732) 636-1900
Fax (732) 636-1982