

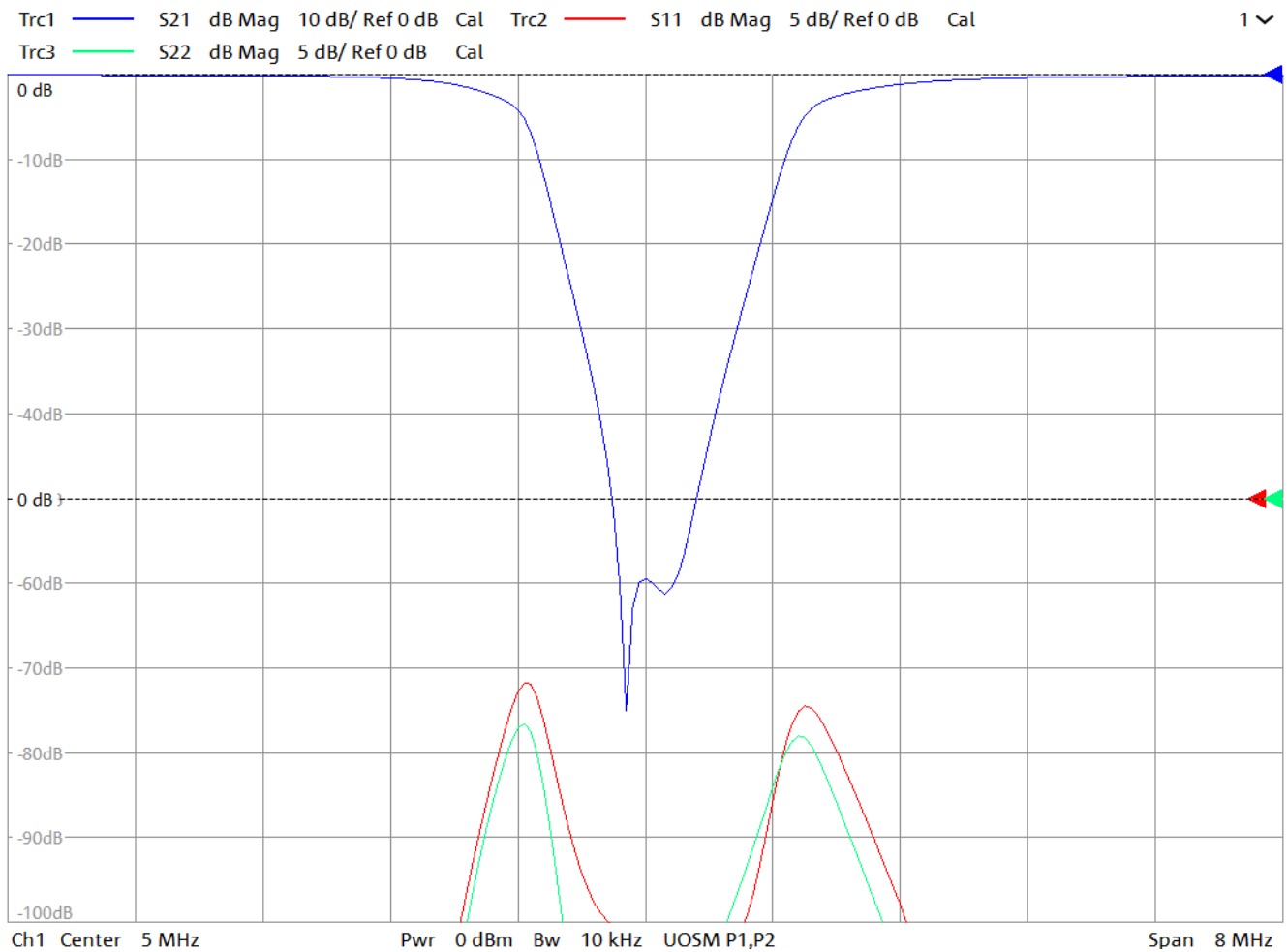
General Description

KR Electronics part number 3439-5-SMA is a 5 MHz Notch filter. The filter has a typical 3 dB bandwidth of 0.7 MHz. Other center frequencies and bandwidths are available. Please consult the factory.

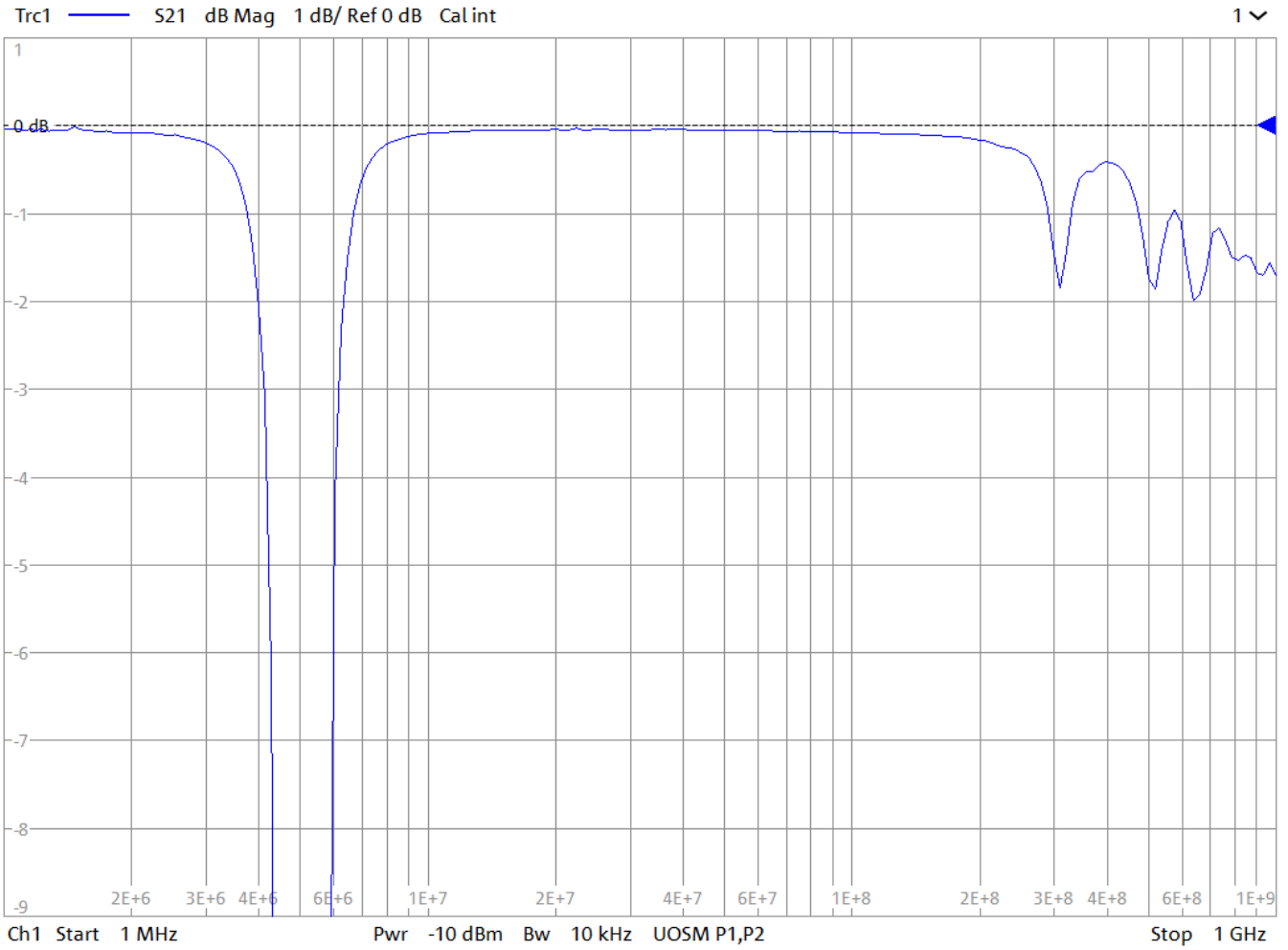
Features

- 5 MHz Notch Filter
- Absorptive/Bidirectional
- 3 dB Bandwidth 0.7 MHz typical
- 50 Ω Source and Load
- SMA Connectors
- Other frequencies available

Typical Performance



KR Electronics 3439-5-SMA

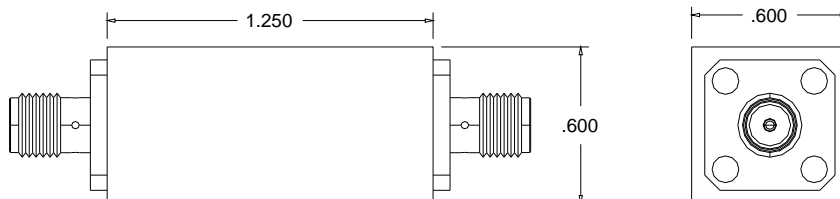
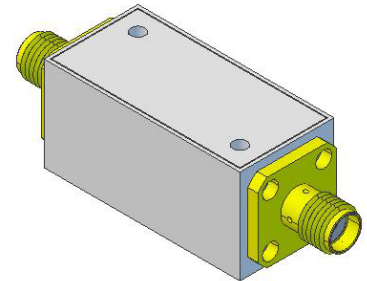
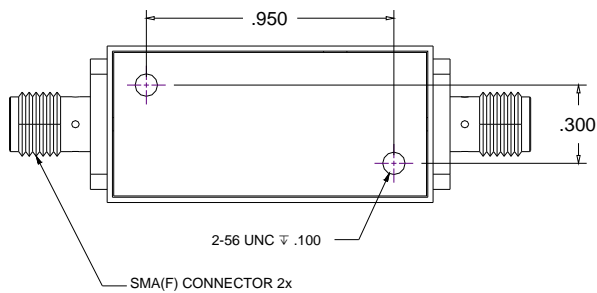


KR Electronics 3439-5-SMA

Specifications

Parameter	Specification	Notes
Filter type	Notch	
Center Frequency	5 MHz	
3 dBc Bandwidth	0.7 MHz typical	
Rejection at 5 MHz	40 dB min	
Source and Load	50 Ω	Absorptive Input and Output

Physical Dimensions



Notes:

1. Dimensions in inches
2. Metal Case
3. SMA(F) Connectors
4. Also available in surface mount package