

# KR Electronics, Inc.

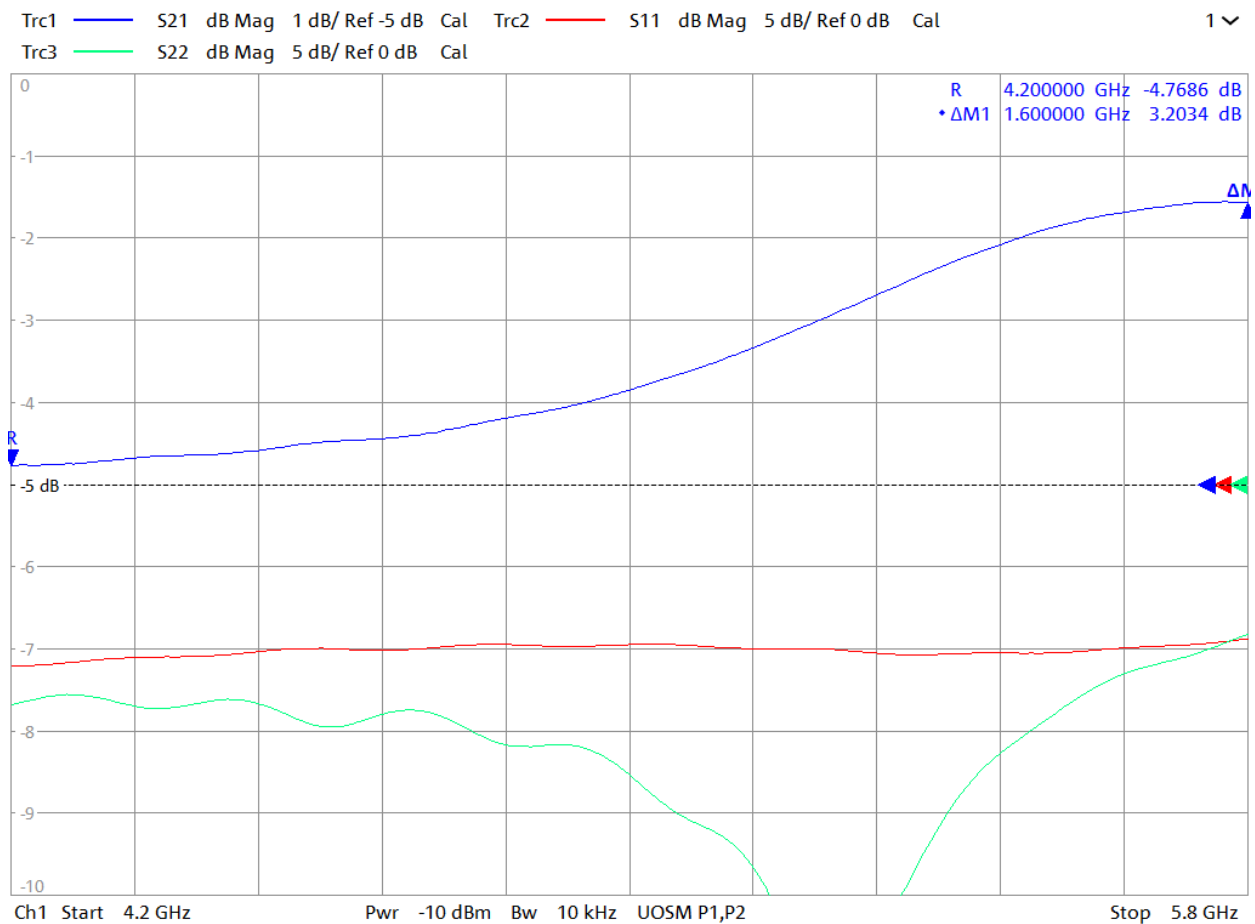
## General Description

KR Electronics part number 3444-SMA-M-F is a 4.2 to 5.8 GHz slope equalizer. The equalization is 3 dB. Other frequencies are available. Please consult the factory.

## Features

- Equalizer
- 4.2 to 5.8 GHz
- Equalization 3 dB
- 50  $\Omega$  Source and Load
- SMA Connectors
- Other frequencies available

## Typical Performance

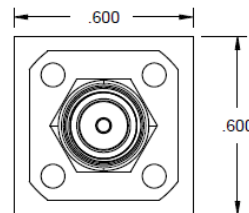
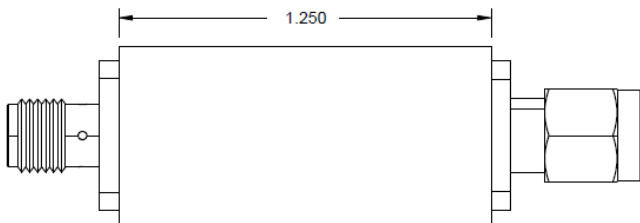
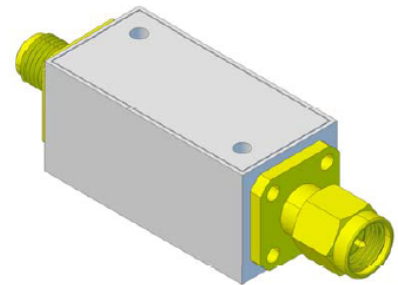
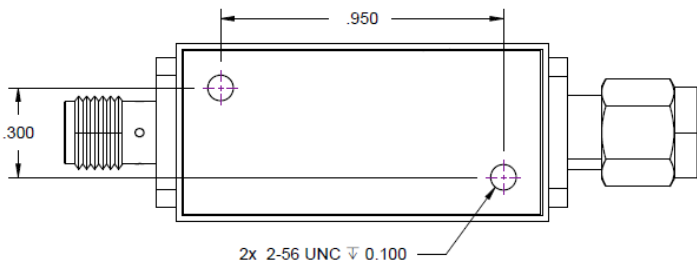


# KR Electronics 3444-SMA-M-F

## Specifications

Parameter	Specification
Filter type	Equalizer
Frequency Band	4.2 to 5.8 GHz
Insertion Loss at 4.2 GHz	5 dBa typical
Equalization	3 ± 0.5 dB
Source and Load	50 Ω

## Physical Dimensions



- NOTES:  
 1. DIMENSIONS IN INCHES  
 2. TOLERANCE UNLESS NOTED ±0.020"  
 3. SMA(F) TO SMA(M) CONNECTORS