



LEAD SULFIDE INFRARED (PbS) DETECTOR ARRAY (0.5 - 3 microns)

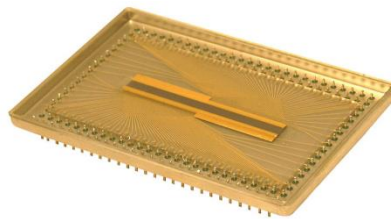
Advantages

- New Automated Chemical Processing (ACP) produces higher yield at lower cost.
- Extremely high reliability under extreme conditions.
- Long shelf life.
- Hermetically sealed package to completely eliminate humidity attack on detection area.
- Wide range of electrical characteristics available.
- Wide range of sizes available.
- 100% tested.
- State of the art microelectronics fabrication capability.
- Specializing in high density arrays. 64/128 element, etc.

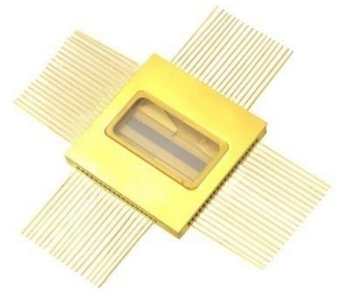
Overview

Agiltron manufactures state-of-the-art lead sensitivity Sulfide (PbS) for room temperature operation as well as thermoelectrically cooled operation for spectroscopy from 0.5 to 3 microns. The linear array is with 128 elements or 64 elements. The device can be supplied with integrated optical filters. It can be connected with pre-amplifiers or multiplexed amplifiers for applications. Thermoelectronic cooler and thermistor can be built in for temperature stabilization.

Listed below is typical 128 element electrical characteristics of PbS Array of Agiltron Automated Chemical Processing (ACP) detectors.



128 Array



64 Array

Parameter	Typical Performance
Operating Wavelength Range:	0.5 to 3 Microns (PbS)
Number of Elements:	128 detector elements
Element Size:	Pixel width 230 microns, pixel height 2570 microns, and pixel pitch 320 microns
Peak Detectivity:	$D^* : 1 \times 10^{11} \text{ (cm} \cdot \text{Hz}^{1/2} \cdot \text{W}^{-1})$

Mechanical Features

PbS Detector array is typically manufactured on quartz substrate. Devices can be supplied integrated with optical condenser elements, thermoelectric (TE) coolers, and processing electronics, all in a miniature package.

Aging Characteristics

All stock detector arrays undergo a minimum four week aging period. Experience with detectors manufactured by the advanced process, including the above aging period, has shown the electrical characteristics to be stable to within 10% for over a year.

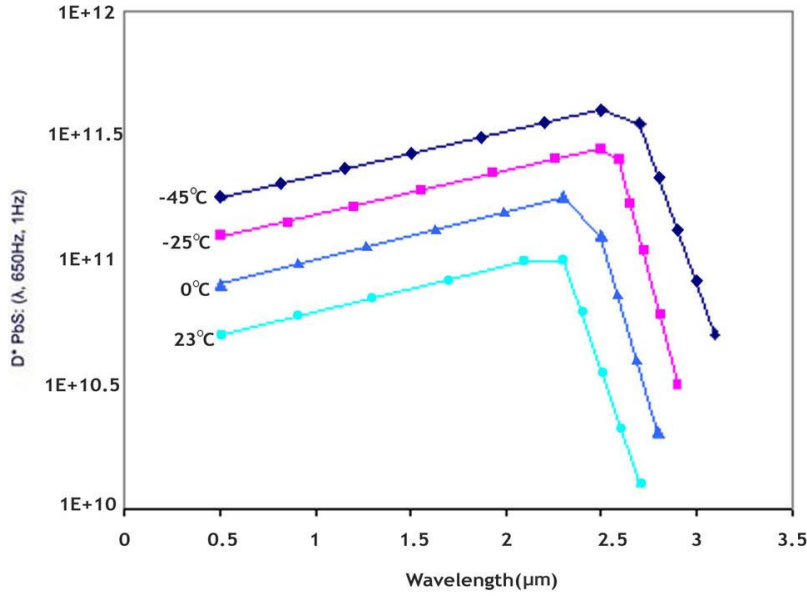


Revised on 5/2/21

(Click here for latest revision)

Response of Detectors

The typical response for PbS operates in 0.5 to 3 micron spectral region with time constants below 400 usec. TE-cooled packages are available with a response in the 0.5 to 3 micron region with increased D*. Typical spectral response of standard PbS detector is shown below.



Ordering Information

PBSA-	2				
	Material Type	Array	Type	Element size: width×height (μm)	Pixel pitch (μm)
	2=Lead Sulfide(PbS)	64 array=064 128 array=128	00=Special 10=Packaged	Size of 64 array=0260x2600 Size of 128 array=0230x2570	320μm=0320

*Product dimensions may change without notice. This is sometimes required for non-standard specifications.



15 Presidential Way
 Woburn, MA 01801
 Tel: (781) 935-1200
 Fax: (781) 935-2040
 Email: sales@agiltron.com
 www.agiltron.com