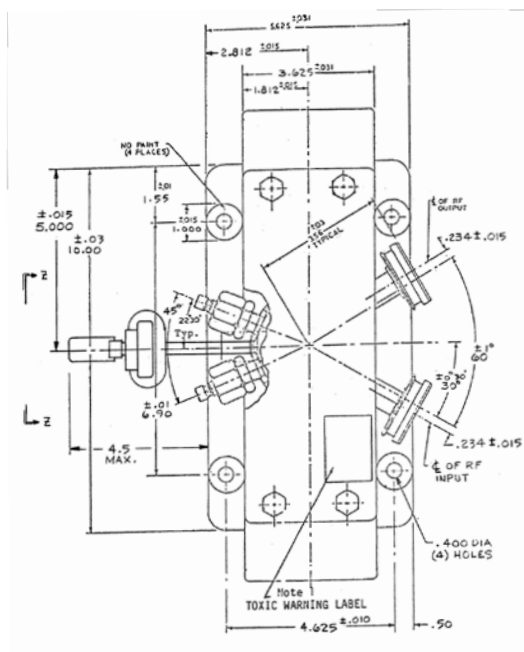
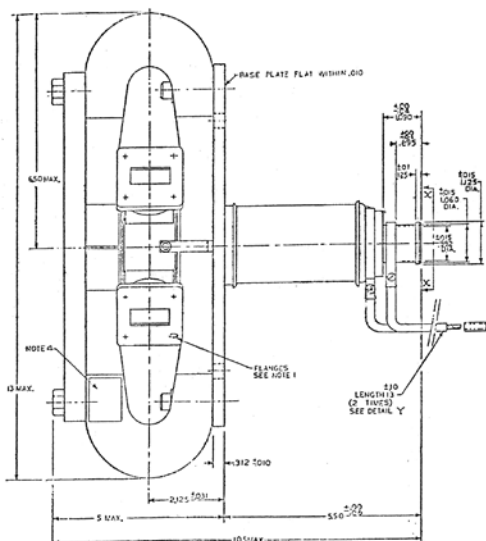
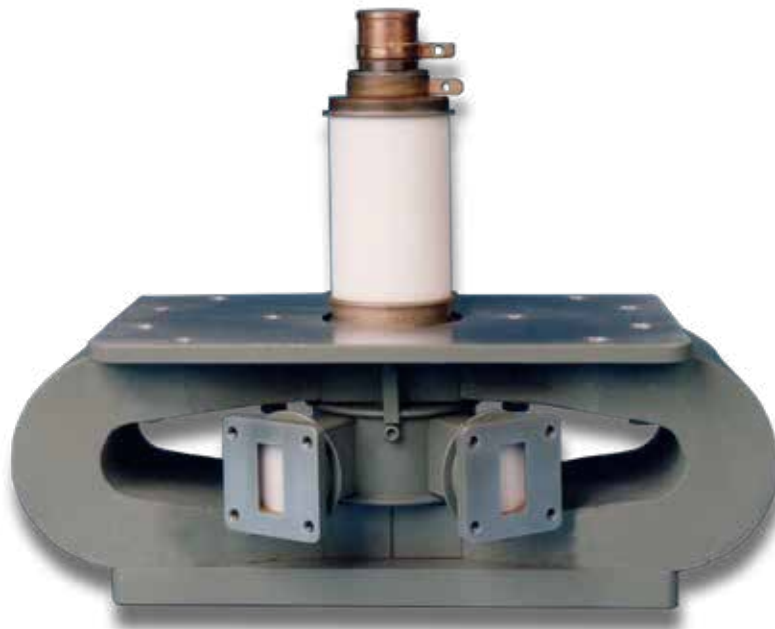


Communications & Power Industries Crossed-Field Amplifier

With a history of producing high quality products, we can help you with your CFA.

Contact us at BMDMarketing@cpii.com or at call us at +1 978-922-6000.



FEATURES:

- Frequency 8.9 – 9.5 GHz
- Peak power output 900 kW
- Duty cycle .001
- Anode voltage 38 kV
- Anode current 60 amps
- Pulse width 0.83 microseconds
- Heater 10 volts @ 20 amps
- Liquid cooled anode

BENEFITS:

- High peak power
- Wide band width

APPLICATIONS:

- Ground based radar



Beverly Microwave Division
 150 Sohier Road
 Beverly, Massachusetts
 USA 01915

tel +1 978-922-6000
 email BMDMarketing@cpii.com
 fax +1 978-922-8914
 web www.cpii.com

For more detailed information, please refer to the corresponding CPI technical description if one has been published, or contact CPI. Specifications may change without notice as a result of additional data or product refinement. Please contact CPI before using this information for system design.

©2023 Communications & Power Industries LLC. Company proprietary; use and reproduction is strictly prohibited without written authorization from CPI.