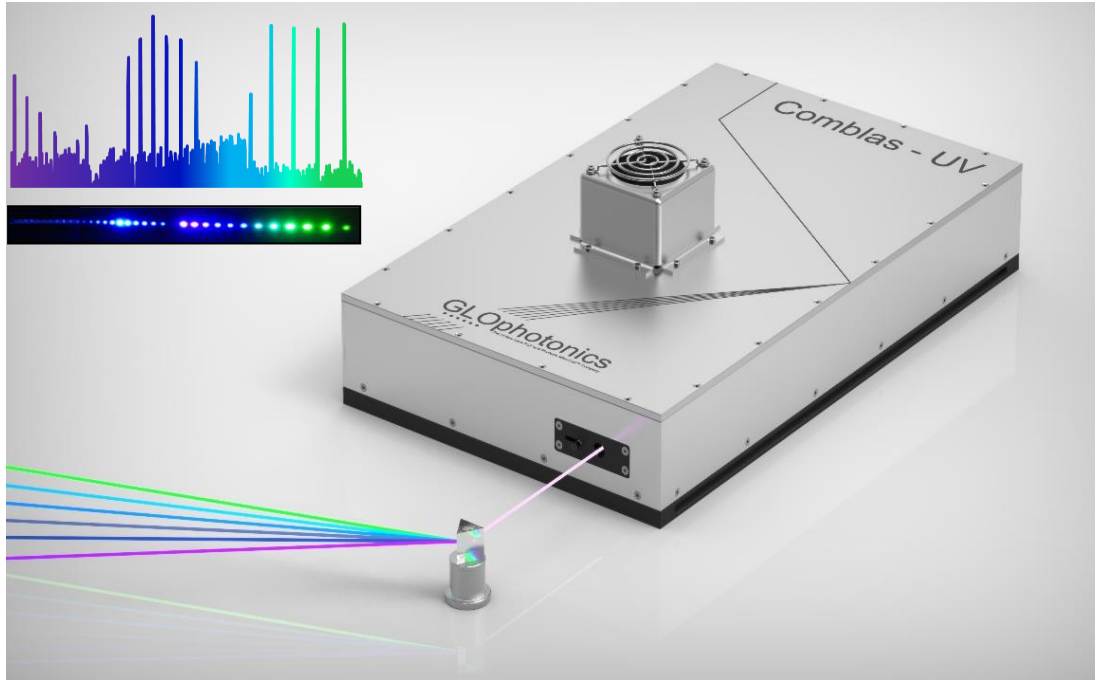




Frequency Conversion

CombLas UV

Multi-line laser for the applications in the UV spectral range



*Your perfect high power spectral density solution
for broadband source in UV*

Up to 20 lasers in a single device

Broadband operation: 250-400 nm

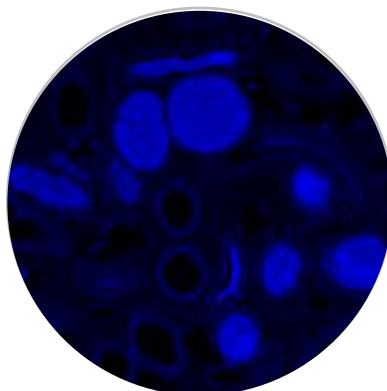
High power spectral density

Output mode quality: $M2 < 1.2$

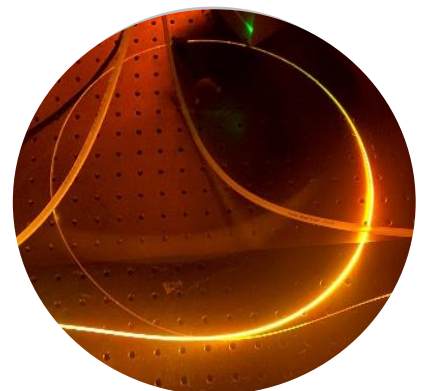
Photolithography &
Marking



Biomedicine



Spectroscopy



Optical Properties

| | | | | | | | | | | |
|----------------------------|---------------------------------|------|------|------|-----|------|------|-----|-----|-----|
| Working wavelength (nm) | 250-400 | | | | | | | | | |
| Total output power | 16 mW | | | | | | | | | |
| Pulse repetition rate | 1 kHz | | | | | | | | | |
| Power spectral density (2) | Wavelength (nm) | 249 | 253 | 265 | 269 | 273 | 278 | 282 | 287 | 292 |
| | PSD ($\mu\text{W}/\text{nm}$) | 0.2 | 0.2 | 0.15 | 4.0 | 7.5 | 12.8 | 9.4 | 4.0 | 4.0 |
| | Wavelength (nm) | 298 | 303 | 309 | 315 | 320 | 327 | 333 | 340 | 347 |
| | PSD ($\mu\text{W}/\text{nm}$) | 4.00 | 20.0 | 50.0 | 300 | 53.0 | 105 | 210 | 405 | 700 |
| | Wavelength (nm) | 355 | 362 | 370 | 378 | 378 | 396 | | | |
| | PSD ($\mu\text{W}/\text{nm}$) | 7800 | 3800 | 680 | 590 | 585 | 600 | | | |

Physical Properties

| | |
|-----------------------|-----------------------|
| Operation voltage | 100 – 240 VAC 50/60Hz |
| System cooling | Air Cooled |
| Operating temperature | 18°C - 25°C |
| Laser head dimension | 288 x 470 x 126 mm |
| Controller dimension | 21 x 17 x 5 mm |
| Laser head weight | 11 kg |
| Controller weight | 1 kg |

(1) Adjustable within the specified wavelength limits according to the customer's needs

(2) Adjustable according to the customer's needs

All specifications may be changed without notice

