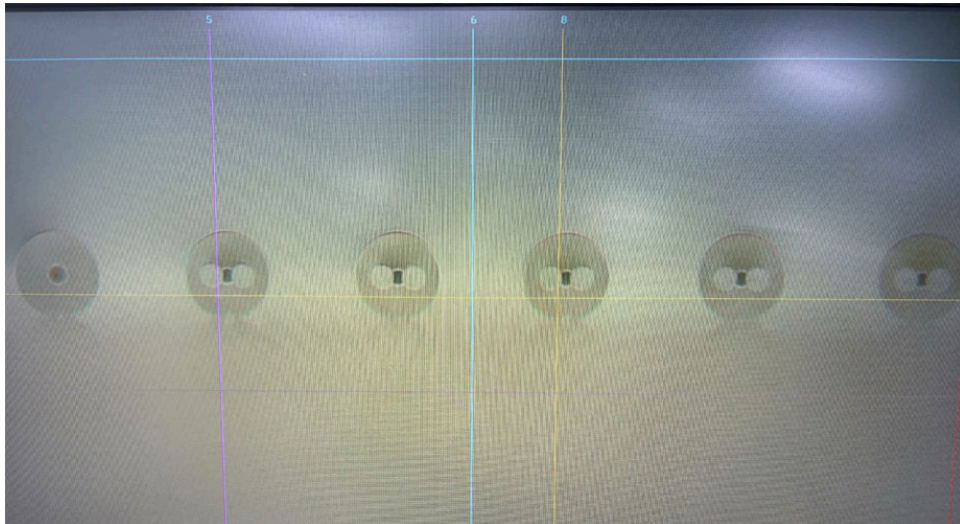


---

## PM & SM & MM Mixed Fiber Array



MEISU's PM & SM & MM Mixed Fiber Array is assembled with different types of fibers, tailored fiber counts and block dimension. It can be used in coherent communication and fiber sensing system.

### PM & SM & MM Mixed Fiber Array Features

Core Pitch: 127 $\mu$ m, 250 $\mu$ m or customer specified

Pitch Tolerance: <0.5 $\mu$ m

Fiber Type: SM, MM, PM

End-face Angle: Any as Customer specified

### How It Works

