

GT020D**50V, DC – 7.0GHz, 20W GaN HEMT****FEATURES**

- Operating Frequency Range: DC to 7.0GHz
- Operating Drain Voltage: 28V & 50V
- Maximum Output Power (P_{SAT}): 30W
- Surface Mount Plastic Package
- Suitable for CW, Pulsed, Linear applications
- 100% DC & RF Production Tested



14 Pin 6x3 mm DFN Package

DESCRIPTION

The GT020D is a 30W (P_{3dB}) unmatched discrete GaN-on-SiC HEMT which operates from DC to 7.0GHz on a 50V supply rail. The wide bandwidth of the GT020D makes it suitable for a variety of applications including cellular infrastructure, radar, communications, and test instrumentation, and can support CW, linear and pulse operations.

The device is housed in an industry-standard 6x3 mm surface mount DFN package. Lead-free and RoHS compliant.

Typical Performances 1 Tone pulsed CW (10% duty cycle, 100 μ s width), 2nd Harmonics NOT optimized

(1) Optimum Peak Power at 2.5dB in compression

(2) Optimum Peak Efficiency at 2.5dB in compression

V_{ds}=50V, I_{dq}= 30 mA, T_A = 25°C

Frequency (MHz)	P _{out} ⁽¹⁾ (dBm)	Gain ⁽²⁾ (dB)	Eff ⁽²⁾ (%)
1000	45	24.3	65.7
1400	44.9	22.1	66.9
1800	45.1	19.8	63.7
2200	45.1	19.6	60.7
2600	45.2	18.8	64.3
3000	45.4	18.7	63.8
4000	45.4	17.2	65
5000	45.1	15.1	60
5500	45.2	14.2	60.6
6000	45.3	13.8	61.6

V_{ds}=28V, I_{dq}= 30 mA, T_A = 25°C

Frequency (MHz)	P _{out} ⁽¹⁾ (dBm)	Gain ⁽²⁾ (dB)	Eff ⁽²⁾ (%)
1000	42.2	20.5	69.1
1400	42.3	19.5	69.1
1800	42.6	18.4	67.5
2200	42.6	17.7	61.7
2600	42.8	17.4	65.7
3000	42.8	16.8	65.8
4000	42.7	14.9	65.9
5000	42.5	12.6	61.5
5500	42.5	12	62.7
6000	42.6	11.8	63.6

GT020D

50V, DC – 7.0GHz, 20W GaN HEMT

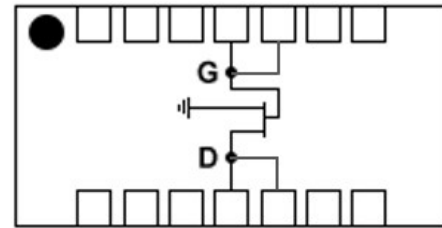
ABSOLUTE MAXIMUM RATINGS^(1, 2)

Parameter	Rating	Symbols and Units
Drain Source Voltage	150	V_{DS} (V)
Gate Source Voltage	-8 to +2	V_{GS} (V)
Operating Voltage	55	V_{dsq} (V)
Junction Temperature	+225	T_{JUNC} (°C)
Storage Temperature	-65 to +150	$T_{STORAGE}$ (°C)
Case Operating Temperature	-40 to +105	T_{CASE} (°C)

1. Exceeding any of these limits may cause permanent damage to this device or seriously limit the life time (MTTF)

2. GalliumSemi does not recommend sustained operation above maximum operating conditions.

BLOCK DIAGRAM

ELECTRICAL SPECIFICATIONS: $T_A = 25^\circ\text{C}$

Parameter	Min.	Typ.	Max.	Symbols and Units	Test conditions
Frequency Range	DC		7000	MHz	
DC Characteristics					
Drain Source Breakdown Voltage	150			V_{BDSS} (V)	
Drain Source Leakage Current		2.5		I_{DLK} (mA)	$V_{gs} = -8\text{V}$, $V_{ds} = 50\text{V}$
Gate Threshold Voltage	-3.4		-1.5	V_{GS} (V)	$V_{ds} = 50\text{V}$
Operating Conditions					
Gate Bias Voltage		-2.5		V_{GSQ} (V)	
Drain Voltage		50		V_{DSQ} (V)	
Quiescent Drain Current		30		I_{DQ} (mA)	

GT020D**50V, DC – 7.0GHz, 20W GaN HEMT**
RF ELECTRICAL SPECIFICATIONS: $T_A = 25^\circ\text{C}$, $V_{DS} = 50\text{ V}$, $I_{DQ} = 30\text{ mA}$, Freq= 3600MHz
Note: Performance⁽¹⁾ in GalliumSemi Production Test Fixture, 50 Ω system

Parameter	Symbol	Min.	Typ.	Max.	Units	Notes
Small Signal Gain	G_{SS}		15.2		dB	
Power Gain	G_{SAT}		15.6		dB	
Saturated Drain Efficiency	$DEff_{SAT}$		51.8		%	
Saturated Output Power	P_{SAT}		45.3		dBm	
Ruggedness Output mismatch	Ψ	VSWR = 10:1, all angles				No damage or shift in performances

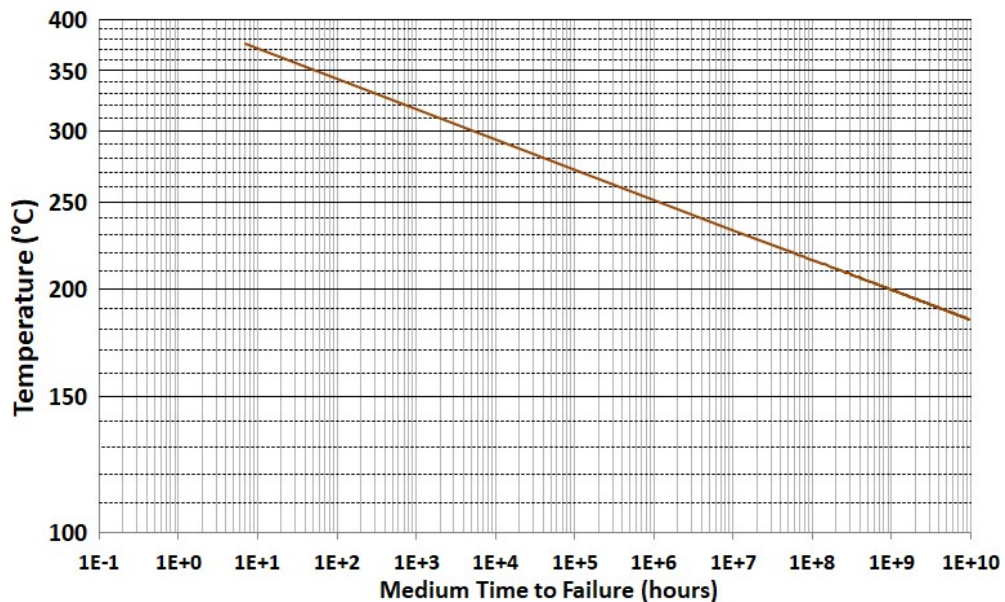
1. 1 Tone Pulse CW, pulse width 100us, duty cycle 10%

GT020D **50V, DC – 7.0GHz, 20W GaN HEMT**

THERMAL AND RELIABILITY INFORMATION -CW ^(1, 2): T_c = 85°C

Parameter	Test condition	Value	Units	Notes
Channel Temperature, T _{ch}		124.1	°C	
R _{th}	P _{diss} 6 W	6.5	°C/W	
MTTF		>1.0E+10	Hrs	
Channel Temperature, T _{ch}		168	°C	
R _{th}	P _{diss} 12 W	6.9	°C/W	
MTTF		>1.0E+10	Hrs	
Channel Temperature, T _{ch}		220	°C	
R _{th}	P _{diss} 18 W	7.5	°C/W	
MTTF		6.0E+07	Hrs	

1. Assumes eutectic attach using 1mil low temp solder.
2. Thermal Resistance using Finite Element Analysis (FEA) simulation, calibrated with Infrared measurement on surface temperature.



GT020D

50V, DC – 7.0GHz, 20W GaN HEMT

LOADPULL MEASUREMENT, $V_{ds} = 50V$ $I_{dq} = 30\text{ mA}$

1 Tone Pulse CW, pulse width 100us, duty cycle 10%

For Optimum Peak Power @ 2.5dB Compression

Freq-MHz	Zin_F0	ZI_F0	Gain-dB	Pout-dBm	Pout-W	Eff-%	AMPM-deg
1000	3.7 j -17.8	26.1 j 11.4	23.7	45	31.3	61.1	-0.2
1200	4.8 j -16.0	23.5 j 8.0	21.6	44.8	30.5	58	1.8
1400	4.1 j -13.3	22.5 j 9.0	21.2	44.9	31.2	56.8	1.7
1600	4.0 j -10.9	19.0 j 8.2	20.4	45.3	34.1	55	1.2
1800	2.9 j -8.6	19.3 j 11.0	19.6	45.1	32.3	55.7	2.3
2000	3.7 j -7.2	25.5 j 8.6	17.5	44.8	30.9	51	4.8
2200	2.3 j -6.0	14.4 j 7.4	18.3	45.1	32.1	48.8	2.6
2400	2.2 j -4.5	14.2 j 9.8	19.3	45	31.3	51.6	1.4
2600	2.5 j -3.1	17.5 j 10.8	18.4	45.2	33.5	57.2	2.6
2800	2.1 j -2.0	15.4 j 7.2	17	45.4	34.8	52.8	2.6
3000	1.9 j -0.8	16.2 j 5.4	17	45.4	34.4	51.4	1
3500	1.8 j 2.0	10.6 j 5.3	16.5	45.3	34	52.6	-0.5
4000	2.1 j 4.7	10.2 j 4.8	16.1	45.4	34.5	55.8	-1.3
4500	2.1 j 7.6	8.5 j 4.4	14.8	45.2	33.4	55.9	-1.6
5000	2.6 j 10.3	9.5 j 0.4	13.7	45.1	32.8	51.7	-1.1
5500	3.0 j 12.6	8.3 j -1.1	13	45.2	33	53.2	-1.9
6000	3.8 j 17.8	8.6 j -3.4	12.4	45.3	34.3	54.8	-1.8

For Optimum Peak Efficiency @ 2.5dB Compression

Freq-MHz	Zin_F0	ZI_F0	Gain-dB	Pout-dBm	Pout-W	Eff-%	AMPM-deg
1000	3.3 j -15.5	33.9 j 25.7	24.3	43.6	23.4	65.7	-1.4
1200	3.7 j -13.2	31.7 j 26.2	22.5	43.7	23.4	64.5	0.6
1400	3.4 j -11.9	25.1 j 19.8	22.1	44.6	29	66.9	1.3
1600	3.8 j -8.7	28.2 j 27.6	19.9	44	25.1	66.4	1.7
1800	3.0 j -6.7	23.9 j 25.9	19.8	44	25.2	63.7	4.8
2000	3.1 j -6.2	20.6 j 22.5	19.2	44.2	26.2	60.4	4.3
2200	2.2 j -4.5	14.4 j 20.9	19.6	44	25.3	60.7	3.2
2400	2.0 j -3.3	13.5 j 19.8	19.3	44	25.3	59.2	4.3
2600	2.1 j -2.2	14.9 j 18.8	18.8	44.6	29	64.3	4.2
2800	1.7 j -0.7	12.5 j 17.1	18.9	44.6	29.3	63.2	2.4
3000	1.5 j 0.7	11.2 j 17.3	18.7	44.2	26.3	63.8	1.5
3500	1.5 j 3.3	6.8 j 10.9	17.7	44.3	27.3	62.6	-0.4
4000	1.6 j 5.9	6.3 j 9.5	17.2	44.1	25.8	65	-1
4500	1.9 j 8.1	5.1 j 6.2	15.8	44.2	26.3	61.2	-2.1
5000	1.9 j 11.6	5.1 j 3.7	15.1	44	25.4	60	-2
5500	2.4 j 13.8	4.5 j 0.8	14.2	44.2	26	60.6	-3.1
6000	3.0 j 19.1	5.1 j -1.5	13.8	44.5	28.1	61.6	-2.6

GT020D

50V, DC – 7.0GHz, 20W GaN HEMT

LOADPULL MEASUREMENT, $V_{ds} = 28V$ $I_{dq} = 30$ mA

1 Tone Pulse CW, pulse width 100us, duty cycle 10%

For Optimum Peak Power @ 2.5dB Compression

Freq-MHz	Zin_F0	ZI_F0	Gain-dB	Pout-dBm	Pout-W	Eff-%	AMPM-deg
1000	4.7 j -18.2	18.3 j 1.6	21.2	42.2	16.8	63.2	-0.3
1200	4.0 j -16.0	13.9 j 0.9	19.6	42.1	16.4	54.8	1.9
1400	3.5 j -12.6	16.9 j 4.2	19.7	42.3	17.3	63.5	1.1
1600	3.2 j -9.9	13.5 j 2.8	18.4	42.6	18.2	59.3	-1.3
1800	3.1 j -8.5	15.7 j 3.6	18.4	42.6	18.3	58.8	1.3
2000	3.1 j -7.1	17.2 j 2.7	17.2	42.4	17.3	54.4	2.9
2200	3.0 j -5.6	16.5 j 1.5	16.9	42.6	18.1	55.3	2
2400	2.7 j -4.4	16.5 j 1.5	16.4	42.4	17.5	53.3	2.5
2600	1.9 j -2.9	12.5 j 3.9	17.7	42.8	19	59.8	0.8
2800	2.2 j -1.8	13.5 j 1.7	16.7	42.9	19.2	56.9	0.3
3000	2.2 j -0.6	16.0 j 0.9	15.7	42.8	19	57.5	0.1
3500	2.0 j 2.1	10.9 j 1.3	15.4	42.9	19.4	58.5	-1.7
4000	1.8 j 5.1	11.3 j -0.4	14.3	42.7	18.9	58.2	-1.6
4500	2.2 j 7.5	10.0 j -1.0	13.2	42.6	18.5	57.4	-2.3
5000	2.2 j 10.7	9.8 j -4.2	12.4	42.5	18.1	55.6	-2.2
5500	2.6 j 13.1	9.9 j -6.9	11.3	42.5	18.2	53.6	-2.5
6000	3.2 j 18.8	10.1 j -7.5	11	42.6	18.7	58.4	-2.3

For Optimum Peak Efficiency @ 2.5dB Compression

Freq-MHz	Zin_F0	ZI_F0	Gain-dB	Pout-dBm	Pout-W	Eff-%	AMPM-deg
1000	4.6 j -16.5	30.3 j 3.7	20.5	41.4	14.1	69.1	2.1
1200	4.3 j -13.4	29.8 j 8.2	19.7	41.1	12.8	67.7	3.8
1400	3.3 j -10.9	25.3 j 13.4	19.5	41.2	13.2	69.1	2.8
1600	3.6 j -8.1	20.7 j 11.6	18.4	41.4	14	69.6	-1.9
1800	2.7 j -6.0	17.9 j 16.3	18.4	40.8	12.3	67.5	1.5
2000	2.1 j -4.9	16.0 j 16.2	18	40.6	11.7	59.5	3.2
2200	1.9 j -4.2	16.2 j 10.0	17.7	41.9	15.9	61.7	2.5
2400	2.0 j -3.5	14.8 j 10.9	17.6	41.7	14.8	60.6	2.6
2600	1.7 j -1.5	13.1 j 13.5	17.4	41.2	13.3	65.7	2.4
2800	1.5 j 0.1	11.8 j 11.9	17.2	41.5	14.1	65.5	0.8
3000	1.5 j 1.1	12.0 j 11.6	16.8	41.3	13.4	65.8	0.1
3500	1.6 j 3.4	8.7 j 6.4	15.3	42	16.1	66.1	-2
4000	1.6 j 6.3	8.2 j 5.0	14.9	41.6	14.9	65.9	-2.6
4500	1.8 j 9.2	5.4 j 3.0	13.9	41	12.7	64.2	-4.6
5000	2.1 j 11.9	7.0 j 1.1	12.6	41.3	13.7	61.5	-2.7
5500	2.3 j 14.5	5.4 j -2.6	12	41.3	13.6	62.7	-5.9
6000	2.9 j 20.0	5.7 j -5.0	11.8	41.4	13.9	63.6	-4.8

GT020D

50V, DC – 7.0GHz, 20W GaN HEMT

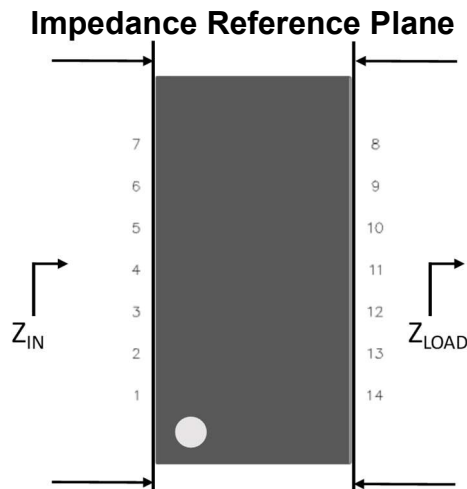
LOADPULL MEASUREMENT NOTES

Source and Load impedance @ 2nd Harmonic are set to 10 Ohms

With proper 2nd Harmonic termination, expect +5% Efficiency for Source and similar with Drain 2nd Harmonic.

Z_{LOAD} : Measured Impedance presented to the output of the device in the reference plane

Z_{IN} : Measured input Impedance at the input of the device in the reference plane

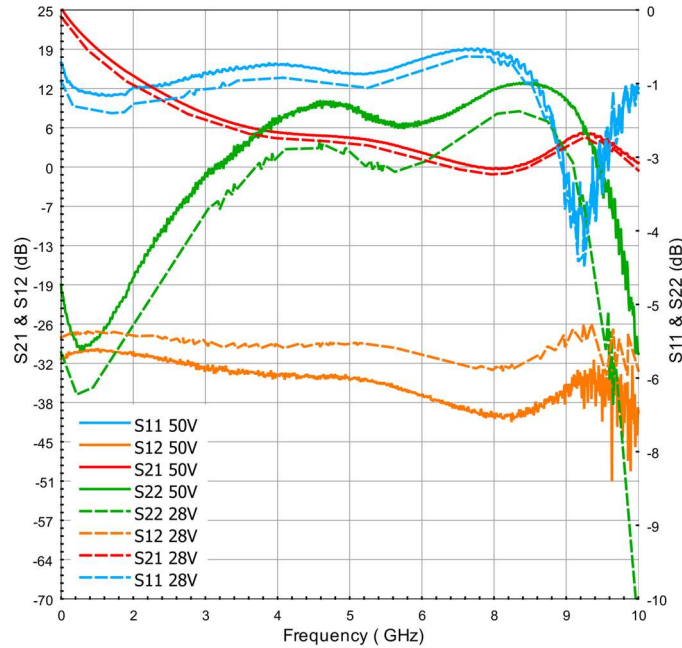


Raw data and full Loadpull measurement report available at request: sales@galliumsemi.com

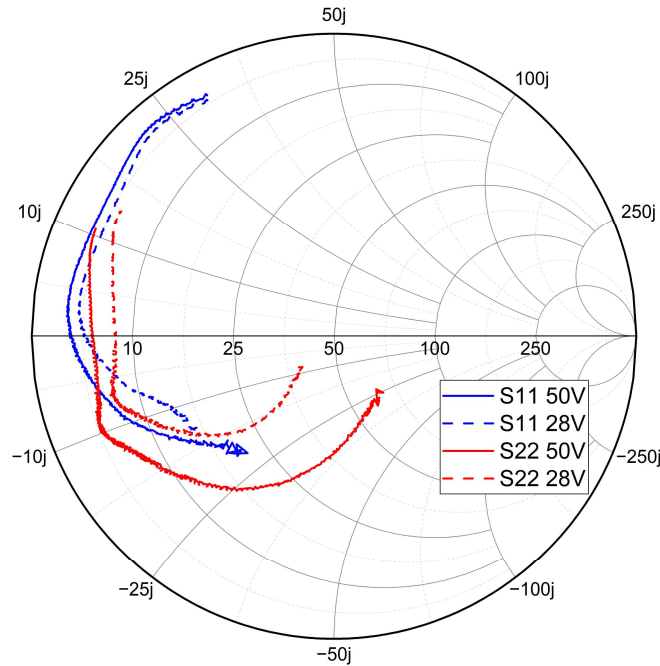
GT020D **50V, DC – 7.0GHz, 20W GaN HEMT**

BROADBAND S-PARAMETERS MEASUREMENT, $V_{ds}= 28 \text{ \& 50V}$ $I_{dq} = 30 \text{ mA}$
1 Tone CW

S Parameters (Mag-dB)



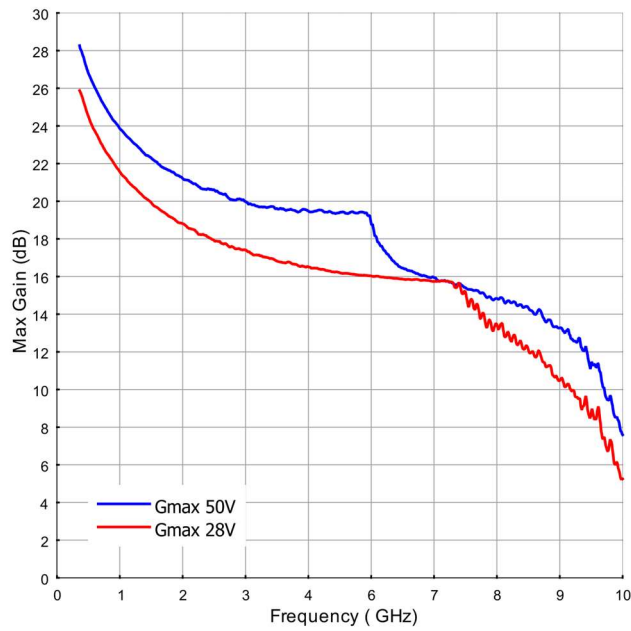
S11 & S22 0.4-8 GHz



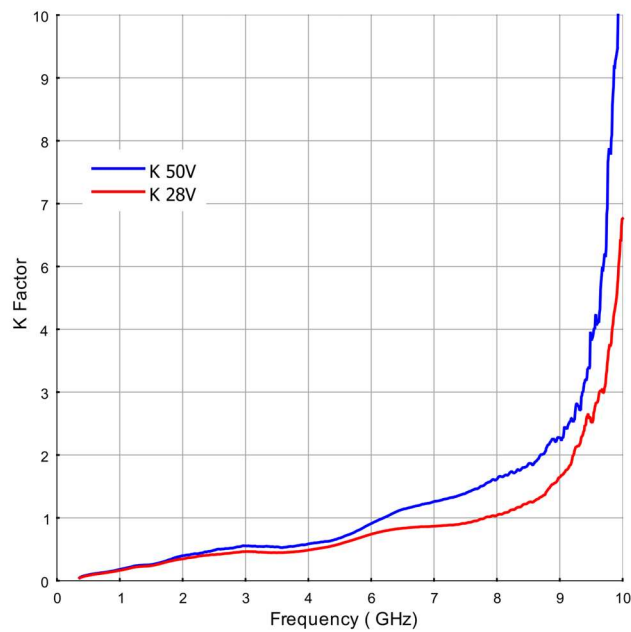
GT020D **50V, DC – 7.0GHz, 20W GaN HEMT**

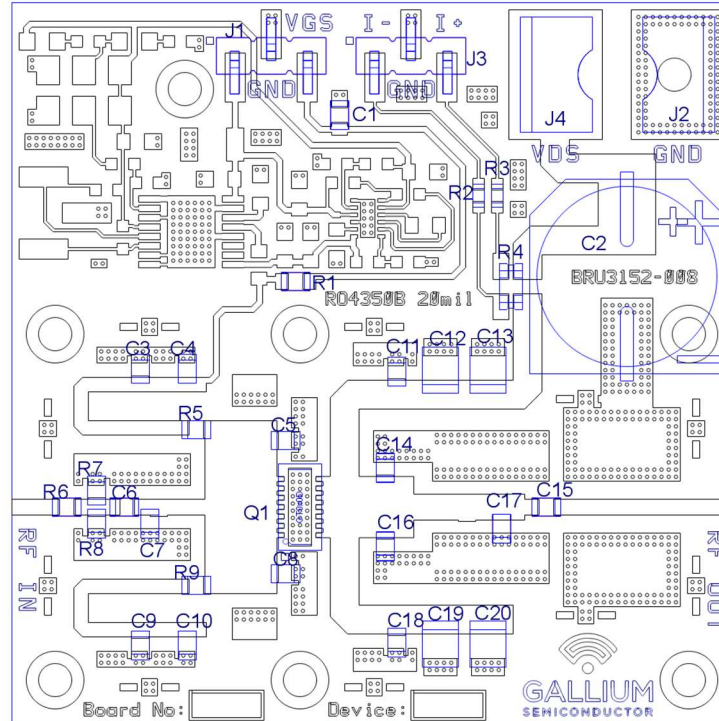
BROADBAND S-PARAMETERS MEASUREMENT, $V_{ds} = 28$ & $50V$ $I_{dq} = 30$ mA
1 Tone CW

Maximum Available Gain



K Factor



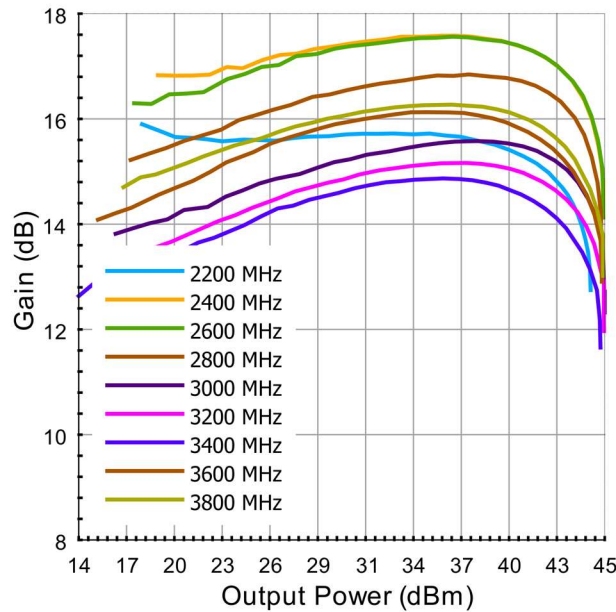
GT020D**50V, DC – 7.0GHz, 20W GaN HEMT****EVALUATION TEST FIXTURE 2.2-3.7 GHz**

COMPONENT DESIGNATOR	VALUE	SIZE	PART NUMBER	REMARKS
Q1	GT020D	6 x 3 mm DFN	Gallium GT020D	
C1	10 μ F	0805	Murata GRM21BC71E106K	-
C2	220 μ F	12.5 mm	Nichicon UCZ1J221MN1Z	63 V
C3, C9, C11, C15, C18	6.8 pF	0805	ATC 600F6R8BT250XT	ATC 600F series
C6	3 pF	0805	ATC 600F3R0BT250XT	ATC 600F series
C4, C10	10 nF	0805	Murata GRM2165C2A103J	-
C5	0.5 pF	0805	ATC 600F0R6AT250XT	ATC 600F series
C8	0.5 pF	0805	ATC 600F0R5AT250XT	ATC 600F series
C7	1.2 pF	0805	ATC 600F1R2AT250XT	ATC 600F series
C12, C13, C19, C20	10 μ F	1210	Murata GRM32EC72A106K	100V
C14, C16	DNP	0805	-	-
C17	0.6 pF	0805	ATC 600F0R6AT250XT	ATC 600F series
J1	Pin header	5.1 mm	Samtec TSM-103-01-L-SV	Gate circuit supply
J3	Pin header	5.1 mm	Samtec TSM-103-01-L-SV	Current sense resistor outputs
J4	Faston connector	6.3 x 0.8 mm	-	Drain supply
J5	Faston connector	6.3 x 0.8 mm	-	Drain supply ground reference
PCB	PCB	50.0 x 50.0 mm	-	Rogers RO4350B, 20 mill thickness
R1	DNP	0805	-	0 Ω
R2, R3	1.0 k Ω	0603	-	-
R4	10 m Ω	1206	Ohmite LVK12R010C	0.5 W, 0.25 %
R5	5.1 Ω	0805	Yageo RT0805DRD075R1L	-
R6	2.0 Ω	0805	Vishay PCAN0805K2R00F	1 W, 1 %
R7, R8	1.0 k Ω	0805	Vishay PCAN0805E1001B	1 W, 0.1 %
R9	DNP	0805	-	-

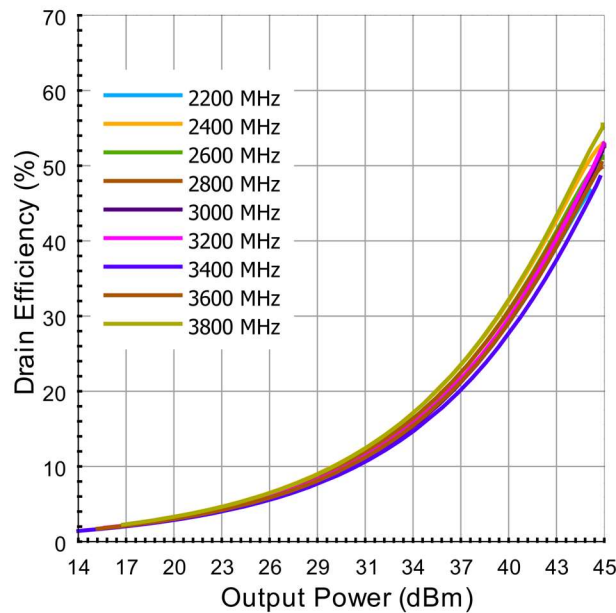
GT020D **50V, DC – 7.0GHz, 20W GaN HEMT**

Typical Performance Curves as Measured in the 2.2-3.7 GHz Evaluation Test Fixture:
 Pulsed CW (10% duty cycle, 100µs width) , VDS = 50 V, IDQ =30 mA, TC = 25°C (Unless Otherwise Noted)

Gain vs. Output Power and Frequency



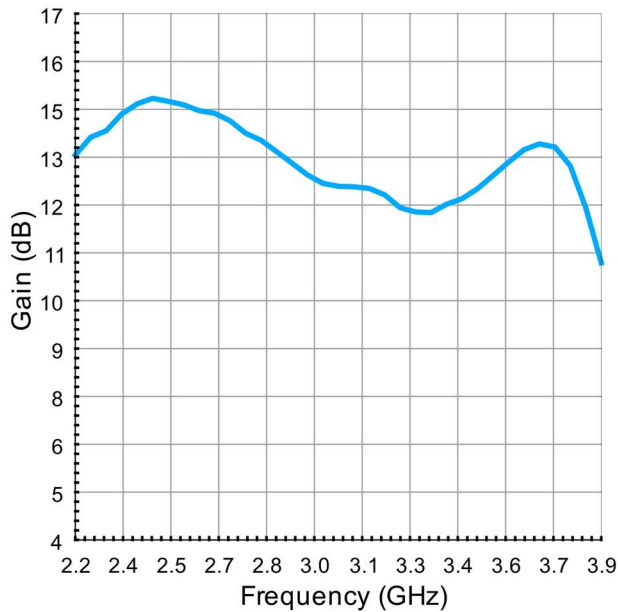
Drain Efficiency vs. Output Power and Frequency



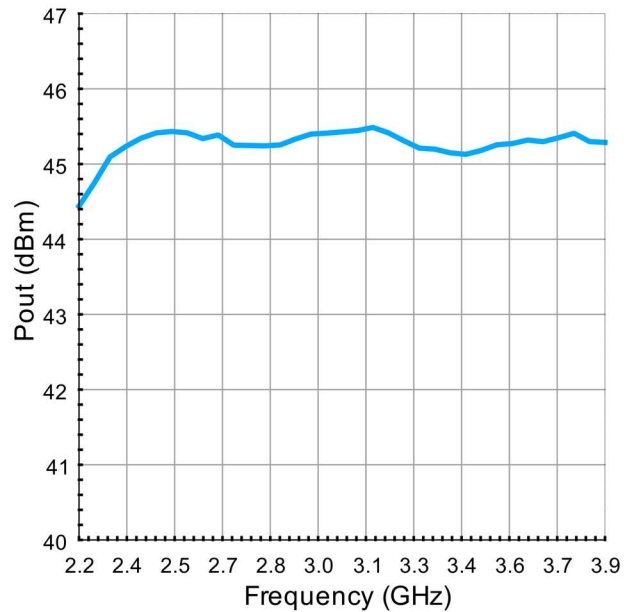
GT020D 50V, DC – 7.0GHz, 20W GaN HEMT

Typical Performance Curves as Measured in the 2.2-3.7 GHz Evaluation Test Fixture:
 Pulsed CW (10% duty cycle, 100µs width) , VDS = 50 V, IDQ =30 mA, TC = 25°C (Unless Otherwise Noted)

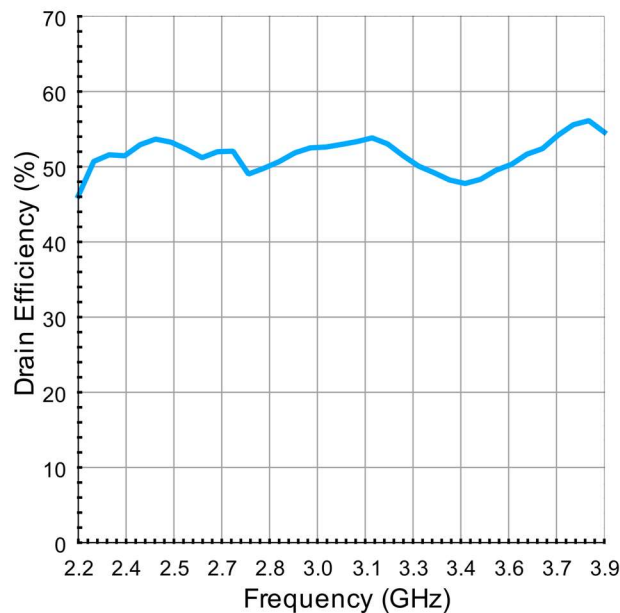
Gain vs. Frequency, 2.5dB Compression



Pout vs. Frequency, 2.5dB Compression



Drain Efficiency vs. Frequency, 2.5dB Compression



GT020D**50V, DC – 7.0GHz, 20W GaN HEMT****GaN HEMT BIASING SEQUENCE**

To turn the transistor ON

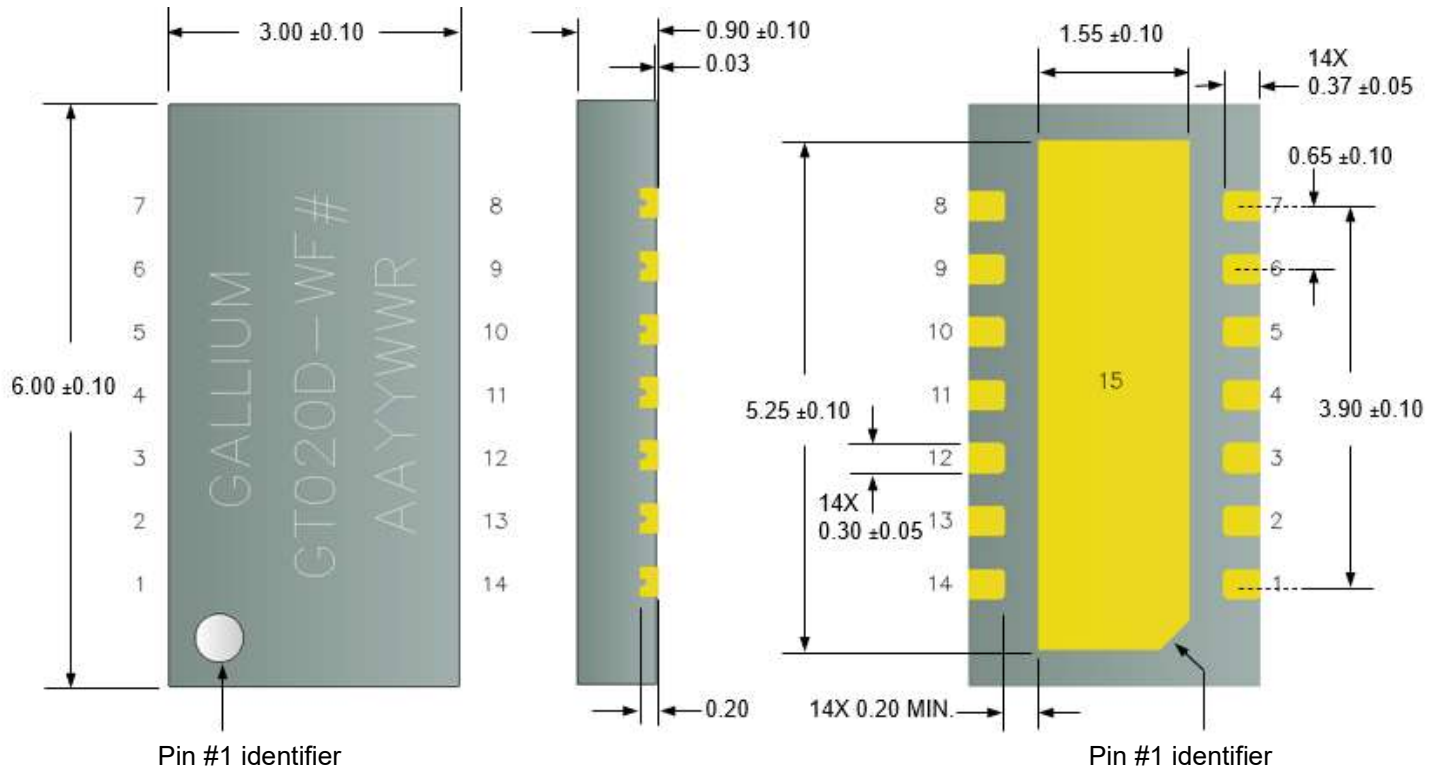
1. Set V_{GS} to -5V
2. Turn on V_{DS} to normal operation voltage (50V)
3. Slowly increase V_{GS} to set I_{DQ} current (30 mA)
4. Apply RF power

To turn the transistor OFF

1. Turn the RF power off
2. Decrease V_{GS} to -5V
3. Turn off V_D . Wait a few seconds for drain capacitor to discharge
4. Turn off V_{GS}

GT020D 50V, DC – 7.0GHz, 20W GaN HEMT

PACKAGE DIMENSIONS



Note: Dimension in mm

PIN CONFIGURATION

Pin	Input/Output
1, 2, 3	Not connected
4, 5	RF Input / Gate Voltage
6, 7, 8, 9	Not connected
10, 11	RF Output / Drain Voltage
12, 13, 14	Not connected
15 (Paddle)	Ground

DEVICE LABEL

Line 1: COMPANY NAME: GALLIUM

Line 2: PART NUMBER - WAFER #

Line 3: AA: Assembly Code

YYWW: Assembly Date Code

R: Reserved code

GT020D**50V, DC – 7.0GHz, 20W GaN HEMT****HANDLING PRECAUTIONS**

Parameter	Symbol	Class	Test Methodology
ESD – Human Body Model	HBM	Class 1A (250 V)	ANSI/ESDA/JEDEC Standard JS-001
ESD – Charged Device Model	CDM	Class C3 (1500 V)	ANSI/ESDA/JEDEC Standard JS-002
MSL – Moisture Sensitivity Level	MSL	MSL 1	IPC/JEDEC Standard J-STD-020

**RoHS COMPLIANCE**

Gallium Semiconductor's Policy on EU RoHS available online:

https://www.galliumsemi.com/files/ugd/3748d3_1107b9788f9845f78f45d424097c4c97.pdf

GT020D**50V, DC – 7.0GHz, 20W GaN HEMT**

CONTACT INFORMATION

To request latest information and samples, please contact us at:

Web: <https://www.galliumsemi.com/>

Email: sales@galliumsemi.com

IMPORTANT NOTICE

Even though Gallium Semiconductor believes the material in this document to be reliable, it makes no guarantees as to its accuracy and disclaims all responsibility for any damages that may arise from using its contents. Contents in this document are subject to change at any time without prior notice. Customers should obtain and validate the most recent essential information prior to making orders for Gallium Semiconductor products. The information provided here or any use of such material, whether about the information itself or anything it describes, does not grant any party any patent rights, licenses, or other intellectual property rights. Without limiting the generality of the aforementioned, Gallium Semiconductor products are neither warranted nor approved for use as crucial parts in medical, lifesaving, or life-sustaining applications, or in any other applications where a failure would likely result in serious personal injury or death.

GALLIUM SEMICONDUCTOR DISCLAIMS ANY AND ALL WARRANTIES, EXPRESSED OR IMPLIED, INCLUDING THE IMPLIED WARRANTIES OF MERCHANTABILITY AND FITNESS FOR A PARTICULAR PURPOSE, WITH RESPECT TO SUCH PRODUCTS, WHETHER BY LAW, COURSE OF DEALING, COURSE OF PERFORMANCE, USAGE OF TRADE OR OTHERWISE.