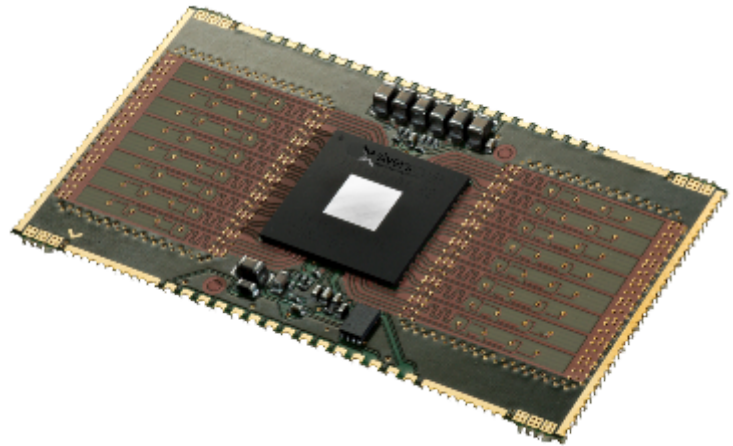


BFM06009

60 GHz RF Module

Operating from 57 GHz to 71 GHz

To help you to meet the requirements of large scale manufacturing of Fixed Wireless Access (FWA) products without sacrificing your competitive performance.



BFM06009 is an innovative RF module covering the full 14 GHz of bandwidth (57-71) with beam steering in both azimuth and elevation.

Technical Specifications

- Full 14 GHz of bandwidth (57-71 GHz)
- Beam steering, both azimuth and elevation