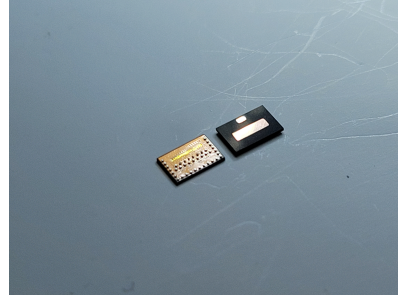
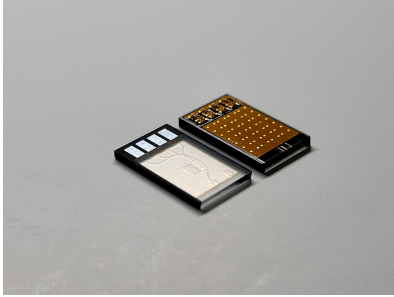


## Products

# Optical Engines for Interconnect



## Optical Engine for 800G-2xFR4

The optical engine for 800G-2xFR4 enables a level of 800 Gbps data transfer. The data transmission distance is up to 2km when using with single-mode fiber(SMF). The elements necessary for photoelectric conversion such as EML/AWG/monitor PD/photodiode array /TIA IC are packaged inside the provided optical engine. The pigtail LC connector can be directly attached to the optical engine.

For 800G application, two identical optical engine pairs are used in a transceiver.

Parameter	Value	Note
Max. data rate	425 Gbps	Aggregated data rate
Signal Rate	53.125 Gbaud	PAM4
Electrical Lane	4 ch	Tx: Input, Rx: Output
Optical Lane	4 ch	Tx: Input, Rx: Output
Package Size	(Tx) 11.03 × 7.5 × 1.0 mm <sup>3</sup> (Rx) 3.2 × 4.2 × 0.27 mm <sup>3</sup>	Excluding BGA size
Channel Pitch	(Tx) 1.5 mm (Rx) 0.75 mm	-
Output Optical Power	>0 dBm	Tx optical launch power per channel
Max. Transmission Distance	2 km	Under QSFP transceiver condition
Operation Temperature	0~70 °C	C-temp
Center Wavelength	1271nm / 1291nm / 1311nm / 1331nm	CWDM
Laser Type	EML (Electro-absorption Modulated Laser)	-
Detector Type	PIN photodiode array	-
Data Sheet	-	Provided on customer's request
Test Result	-	Provided on customer's request



#916, SK V1 Centre, Seonyu-ro 9-gil 10, Yeongdeungpo-gu,  
Seoul, Republic of Korea (07281)

Tel: +82-70-4651-0840

Fax: +82-70-4369-0810