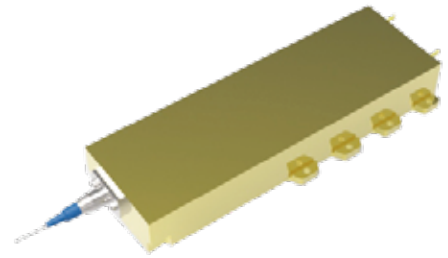


EB-FCP-300-135-0915-10



	Unit	Min	Typ	Max
Optical				
Center Wavelength	nm		915	
Wavelength Tolerance	nm		±10	
Output Power	W		300	
Spectral Width (FWHM)	nm			6
Numerical Aperture	-		0.175	
Fiber Core	μm		135	
Fiber Connector	-		Pigtail	
Fiber Length	m		2	
Optical				
Power Conversion Efficiency	%		55	
Threshold Current	A		1.2	
Operating Current	A		18	
Operating Voltage	V		29	
Thermal				
Operating Temperature	°C		25	
Storage Temperature	°C		-35~75	
Wavelength Temperature Coefficient	nm / °C		0.33	
Others				
Anti Reflection Wavelength Range	nm		1030~1200	
Reflection Efficiency	dB		30	
Soldering Temperature	°C		260(10 sec)	

Remarks

- 1.Explanation of Item Number: EB (Everbright In Short) - FCP (Fiber Coupled Module) - 300 (Output Power) - 135 (Fiber Core)- 0915 (Center Wavelength)- 10(Wavelength Tolerance)
- 2.Above Data Test at 25°C, Unless otherwise stated.
- 3.Please avoid operation and storage in the condensation enviroment. If exceed operating temperature, the device lifetime will be inpacted.
4. Lifetime reduced if exceed nominal output power.

