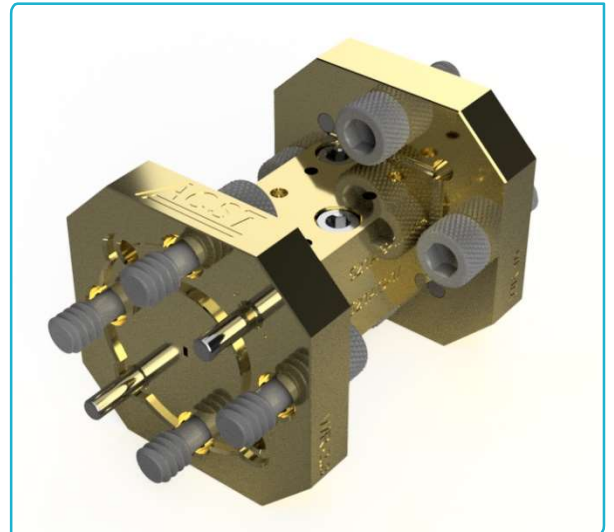



# High precision Tapered Waveguide Section

**521x is a family of tapered straight waveguide sections** based on ACST high precision manufacturing technology.

Covers range of frequencies **from 50 to 1700 GHz**. Exhibits low insertion loss across the frequency band.



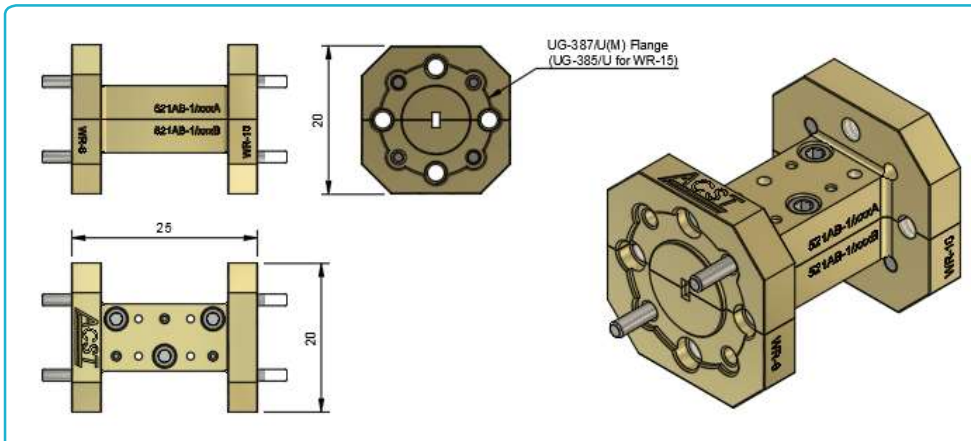
## Technical Specification

<b>PRODUCT</b>	521RA	521SA	510A	521AB	521AC	521AD	521AE	521AF	521AG	521AH
<b>Output Flange</b>	WR-15	WR-12	WR-10	WR-10	WR-10	WR-10	WR-10	WR-10	WR-10	WR-10
<b>Input Flange</b>	WR-10	WR-10	WR-10	WR-8	WR-6.5	WR-5.1	WR-4.3	WR-3.4	WR-2.8	WR-2.2
<b>In. Frequency [GHz]</b>	75-110	75-110	110	90-140	110-170	140-220	170-260	220-330	260-400	330-500
<b>Width [mm]</b>	20									
<b>Height [mm]</b>	20									
<b>Length [mm, ±0.05] *</b>	25									
<b>Insertion loss (S12)</b>	0.7 ± 0.2			1 ± 0.2			1.2 ± 0.2		1.5 ± 0.2	
<b>Material and Finish</b>	Gold plated brass									
<b>PRODUCT</b>	521AJ	521AK	521AL	521AM	521AN	521AO				
<b>Output Flange</b>	WR-10	WR-10	WR-10	WR-10	WR-10	WR-10				
<b>Input Flange</b>	WR-1.9	WR-1.5	WR-1.2	WR-1	WR-0.8	WR-0.65				
<b>In Frequency [GHz]</b>	400-600	500-750	600-900	750-1100	900-1400	1100-1700				
<b>Width [mm]</b>	20									
<b>Height [mm]</b>	20									
<b>Length [mm, ±0.05] *</b>	25		25							
<b>Insertion Loss [dB]</b>	1.7 ± 0.2		2 ± 0.2		2.5 ± 0.2					
<b>Material and Finish</b>	Gold plated brass									

\* Other than standard frequency band combinations available upon request

# High precision Tapered Waveguide Section

## Outline Dimensions



## Order information

- Please indicate product name and type.
- Please indicate desired optional features

## Notes

- > All plotted data represents typical values. Actual performance may vary from unit to unit.

## Caution

- > Any foreign body inserted into the waveguide will diminish performance and may cause damage to instruments.



ACST GmbH reserves the right to make changes to the product or information contained herein without notice. Visit [www.acst.de](http://www.acst.de) for additional data sheets and product information.