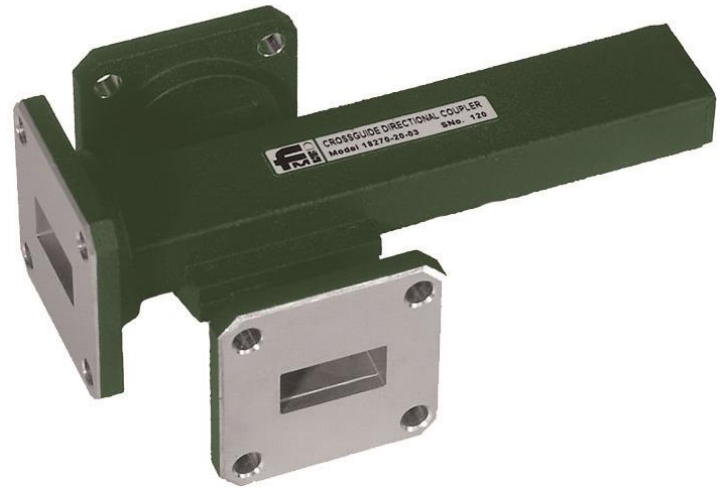




Flann Crossguide Couplers consist of two waveguides joined at 90° with the coupling element mounted in the common broad wall. Couplers are available in 3 or 4 port configurations and standard coupling values are 20, 30, 40 and 50 dB; directivity for models up to 18 GHz is better than 20 dB over the specified frequency range.

The compactness of the Crossguide Coupler suits many applications where space is at a premium and directivity is not the prime consideration, e.g., power and frequency monitoring and isolating local oscillators. Models are available with combinations of waveguide and coaxial ports. Special multiport Crossguide Couplers can be manufactured to suit customers' requirements.



Model 18270-20-03

Specifications

Model	Frequency Range (GHz)	Waveguide			Minimum Directivity (dB)	Coupling		Dimensions (mm)			Weight (kg)	
		WG	R	WR		Sensitivity (dB)	Nominal Accuracy (dB)	A	B	C	3 Port	4 Port
10270	2.60 - 3.95	10	32	284	20	±1.5	±2	90	34	308	5.0	4.9
11A270	3.22 - 4.90	11A	40	229	20	±1.5	±2	62.5	29	256	2.3	1.9
12270	3.94 - 5.99	12	48	187	20	±1.5	±2	61.5	22	227	2.1	2.0
13270	4.64 - 7.05	13	58	159	20	±1.5	±2	58	21	224	1.8	1.7
14270	5.38 - 8.18	14	70	137	20	±1.5	±2	55	15.5	179	1.4	1.3
15270	6.58 - 10.0	15	84	112	20	±1.5	±2	42.5	12.6	164	0.7	0.65
16270	8.20 - 12.5	16	100	90	20	±1.5	±2	36	10.5	136	0.4	0.4
17270	9.84 - 15.0	17	120	75	20	±1.5	±2	32.5	9.5	108	0.35	0.35
18270	11.9 - 18.0	18	140	62	20	±1.5	±2	30	8	96	0.25	0.25
19270	14.5 - 22.0	19	180	51	18	±1.5	±2	30	7	90	0.22	0.22
20270	17.6 - 26.7	20	220	42	18	±1.5	±2	22.5	4.5	65	0.1	0.1
21270	21.7 - 33.0	21	260	42	18	±2	±2	22.5	4.7	73	0.1	0.1
22270	26.4 - 40.1	22	320	28	18	±2	±2	20.7	3.8	50	0.07	0.07
23270	33.0 - 50.1	23	400	22	15	±2	±2	20	3.0	48	0.08	0.08
24270	39.3 - 59.7	24	500	19	15	±2	±2	20	2.5	48	0.08	0.08
25270	49.9 - 75.8	25	620	15	15	±2	±2	14	2.0	34.5	0.07	0.07
26270	60.5 - 92.0	26	740	12	10	±2.5	±2.5	14	1.6	34.5	0.07	0.07
27270	73.8 - 112	27	900	10	10	±2.5	±2.5	14	1.4	34.5	0.07	0.07
28270	92.3 - 140	28	1200	8	10	±2.5	±2.5	14	1.1	34.5	0.07	0.07
29270	114 - 173	29	1400	6								
30270	145 - 220	30	1800	5								
31270	172 - 261	31	2200	4								
32270	217 - 330	32	2600	3								

Specifications available on request

FLANN MICROWAVE LTD.

Dunmere Road
Bodmin
Cornwall
PL31 2QL

GET IN TOUCH:

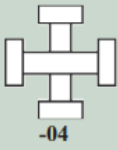
Tel: +44 (0)1208 77777
sales@flann.com
www.flann.com



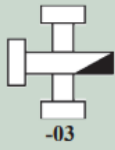
FLANN MICROWAVE

Crossguide Directional Couplers

Series 270



-04



-03



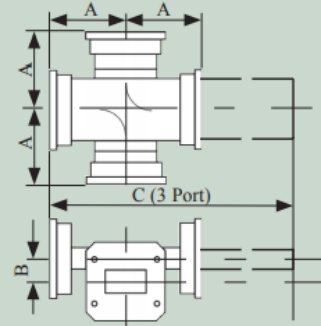
- | | |
|--------------|----------------------------|
| -13 (APC7) | Models 10270 to 18270 only |
| -23 (Type N) | Models 10270 to 18270 only |
| -33 (SMA) | Models 14270 to 20270 only |
| -43 (K Type) | Models 19270 to 22270 only |

ORDERING INFORMATION

Model: Coupling Value Suffix-Type and Number of Ports; Description

Example: Model 17270-30-33 Crossguide Directional Coupler 30 dB Coupling 3 Port with SMA in coupled arm (the fourth arm is fitted with a termination)

Note: Please refer to page 26 for definitions of Flann coupler specifications.



Series 270

Custom Design

Custom built instruments can be supplied; please contact the sales team for more information

sales@flann.com

FLANN MICROWAVE LTD.

Dunmere Road
Bodmin
Cornwall
PL31 2QL

GET IN TOUCH:

Tel: +44 (0)1208 77777
sales@flann.com
www.flann.com