



# THERMAL PAD / GREASE

## What Are Thermal Pads and Thermal Grease?

Cofan's **thermal pads** and **thermal grease** are advanced **thermal interface materials (TIMs)** designed to improve heat transfer between heat-generating components and their cooling solutions (e.g., heat sinks, chassis, or heat spreaders).

They ensure **efficient thermal conductivity**, prevent overheating, and extend the lifespan of electronic devices.

- **Proven Performance:** Trusted in global electronics and automotive industries.
- **Custom Solutions:** Available in various thicknesses, conductivities, and formats.
- **Global Supply Chain:** Reliable delivery and technical support worldwide.

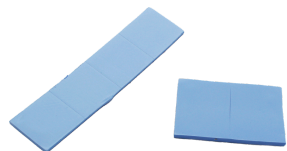
## Choosing the Right Thermal Interface Material

- **Choose Thermal Pads** for easy installation, reusability, and when uniform thickness is required.
- **Choose Thermal Grease** for maximum thermal performance, especially in high-heat, high-precision applications.

Both solutions are engineered to meet **global electronics, automotive, telecom, and industrial cooling requirements**, ensuring **optimal performance and long-term reliability**.

### Product Information

- Type: Silicone and Heatsink Thermal Pad
- Material: Ceramic Filled Silicone Elastomer
  - Application: LED Supply
  - Use Temp: -40 to 160°C
  - Hardness: 20 Shore 00
- Thermal conductivity: 3.0 W/mK
  - Part No: 72.01.90001



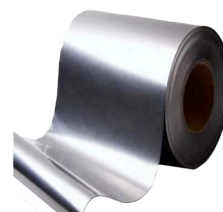
### Product Information

- Type: Double Sided Thermal Tape
- Application: Heat Cure Adhesive
  - Use Temp: -45 to 120°C
  - Fire Rating: Equate 94V0
- Thermal Conductivity: 0.8 W/mK
  - Holding Power: >48 Hours
  - Part No: 72.01.90003



### Product Information

- Process: Thermal Graphite Sheet
  - Application: LED Display
  - Use Temp: -200 to 300°C
  - Hardness: 85 Shore A
- Operation Temperature: -200°C to 300°C
- Thermal Conductivity: 16.0 W/m-K, 120W/m-K
  - Part No: 72.01.90005



## Thermal Pads – Easy, Reliable Heat Transfer

### Thermal Pad Features:

- **Material:** Silicone or polymer-based, infused with ceramic or metal oxide particles.
- **Function:** Bridges gaps between uneven surfaces for consistent heat transfer.
- **Advantages:**
  - Easy to apply and remove
  - Reusable during maintenance
  - Uniform thickness for even surface contact
- **Applications:**
  - **CPUs & GPUs:** Ensures stable performance under high load.
  - **Memory Modules (RAM):** Transfers heat to heat spreaders for stability.
  - **Power Transistors & MOSFETs:** Enhances cooling in amplifiers and power supplies.
  - **Battery Packs:** Maintains safe temperatures in EV and portable devices.
  - **RF Modules & Amplifiers:** Protects performance in telecom systems.
  - **Smartphones, Tablets, Gaming Consoles:** Keeps devices cool during heavy use.
  - **Automotive ECUs & LED Lighting:** Improves reliability in harsh conditions.
  - **Industrial Robotics:** Prevents overheating in controllers and drives.

## Thermal Grease – Maximum Thermal Conductivity

### Thermal Grease Features:

- **Material:** Silicone or ceramic base with thermally conductive fillers (metal oxides, silver, carbon).
- **Function:** Fills microscopic imperfections for maximum contact.
- **Advantages:**
  - High thermal conductivity
  - Superior heat transfer efficiency
  - Ideal for high-performance cooling systems
- **Applications:**
  - **High-Performance CPUs & GPUs**
  - **Server and Data Center Cooling**
  - **Power Modules in Industrial Equipment**
  - **Automotive Electronics** where extreme temperature control is critical